

## Ebenezer Creek Tract

Published on Plantation Properties & Land Investments, LLC (<https://landanddrivers.com>)

---



## Ebenezer Creek Tract

The Ebenezer Creek Tract is a delightful 176± acres featuring 13-14 year old pine plantation and a hardwood border along the historic Ebenezer Creek. Located just outside of Springfield, GA in Effingham County, only 30 minutes from Savannah. This tract would be a great investment opportunity for any buyer. A nice recreational/timber property, featuring approximately 1900 feet of frontage along the creek with 30± acres of hardwoods and the remainder being in pine plantation. This place is loaded with deer signs and would make an excellent hunting tract, home site, weekend retreat or venture property. Enjoy hunting, camping, fishing, kayaking and more all on your own land. Call today for details or to set up a showing. 912.764.LAND(5263)



**Price:** \$404,800

**Property Type:** Land

**Status:** Sold

**Street/Address:** Benjamin Gnann Road

**City:** springfield

**State:** Georgia

**Zip code:** 31329

**County:** effingham

**Acreage:** 176

**Per Acre Price:** \$2,300.00

**Phone Number:** 912.764.LAND(5263)

**Email:** [info@landanddrivers.com](mailto:info@landanddrivers.com)

**Google Maps link:** [View Larger Map](#)

## **Ebenezer Creek Tract**

Published on Plantation Properties & Land Investments, LLC (<https://landandrivers.com>)

---



## **Aerial Map**



## Ebenezer Creek Tract

Published on Plantation Properties & Land Investments, LLC (<https://landanddrivers.com>)



### PLANTATION PROPERTIES & LAND INVESTMENTS, LLC

1207 Merchants Way, Suite 101 Statesboro, GA 30458  
912 7641147 | 5365 | 708 726 5636

Jay & W. Jones

This document is not to be distributed or duplicated.

[www.landandinvestments.com](https://www.landandinvestments.com)

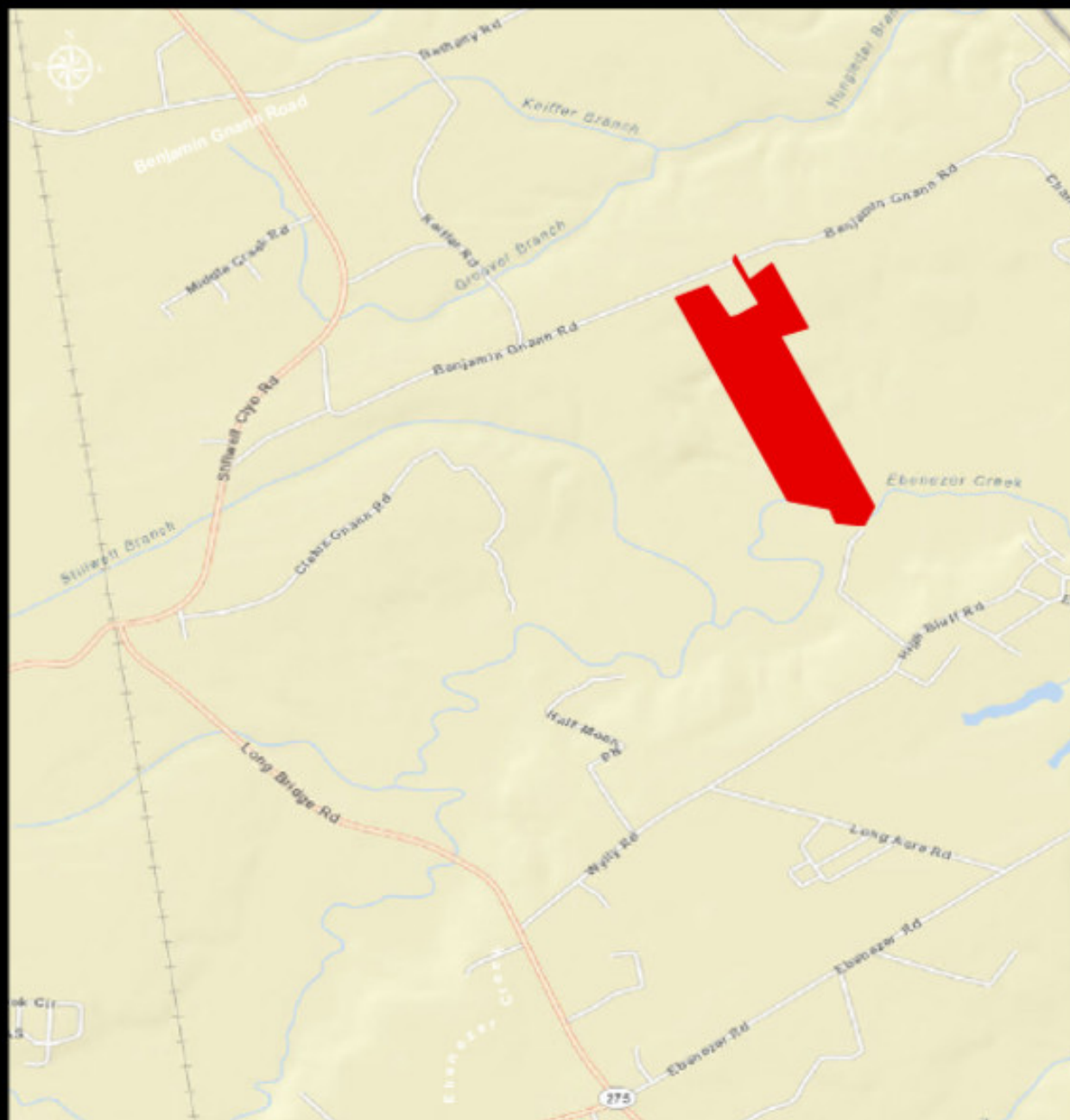
© 2012



## Location Map

## Ebenezer Creek Tract

Published on Plantation Properties & Land Investments, LLC (<https://landanddrivers.com>)



### PLANTATION PROPERTIES & LAND INVESTMENTS, LLC

1207 Merchants Way, Suite 101 Statesboro, GA 30458  
912 7641417 (5265) | 708 726 5636

Jay & Wendy

This document is not to be distributed or duplicated.

[www.landandinvestments.com](https://www.landandinvestments.com)

© 2018



Source URL: <https://landanddrivers.com/property/ebenezer-creek-tract>