



## Snug Hill Farm

Snug Hill Farm is a beautiful 100± acre farm featuring some wooded acreage, a creek, a stream and a stunning pasture adorned with approximately 75 mature pecan trees and 44 pomegranate trees, as well as about a dozen young English Walnut trees. The majority of this land consists of open pasture and is surrounded by woods on 3 sides as well as a seasonal creek and streams. The forth and entry side of Snug Hill Farm is a charming organic farm. A gorgeous pecan lined drive leads you to the rear 16± acre fenced pasture which is secluded and truly the most stunning spot on this property. Green rolling pastures scattered with large mature pines, resembling a savannah but surrounded by hardwoods. There are several amazing potential building sites, with the back 16 being our personal favorite. This property would make a great farm, home site, weekend retreat or recreational tract with excellent habitat for the wildlife and plenty of food produced in the surrounding acreage, cropland and excellent natural forage produced in the woodlands. This farm would also be a great place for cattle, horses or other livestock. Located just outside the town of Garfield, GA in Emanuel County. Less than 30 minuets to the Statesboro, GA or I-16. A wonderful multi-use property! This tract would be a great investment opportunity for any buyer. Enjoy farming, hunting, fishing, camping and more all on your own land. Call Jason Today! 912.764.LAND(5263)



**Price:** \$220,000

**Property Type:** Land

**Status:** Sold

**Street/Address:** 0 Grey Mule Farm Road

**City:** Garfield

**State:** Georgia

**Zip code:** 30425

**County:** emanuel

**Acreage:** 100

## Snug Hill Farm

Published on Plantation Properties & Land Investments, LLC (<https://landanddrivers.com>)

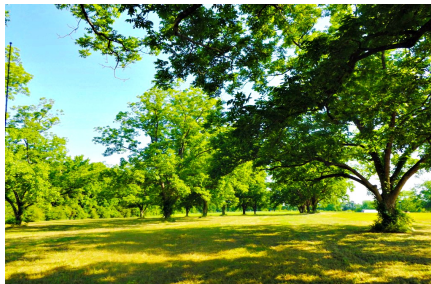
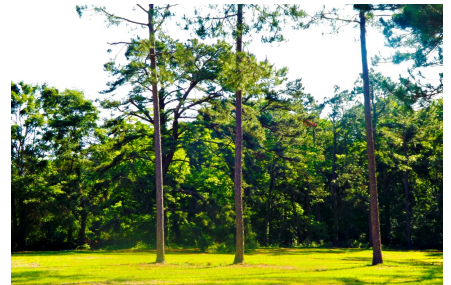
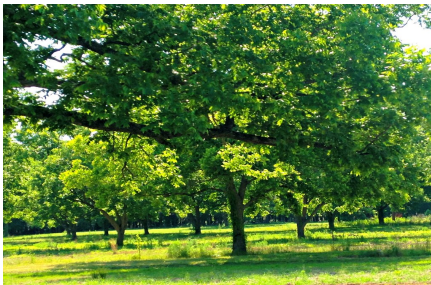
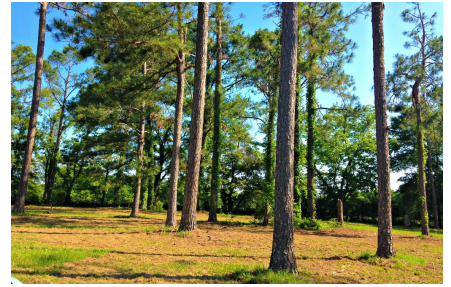
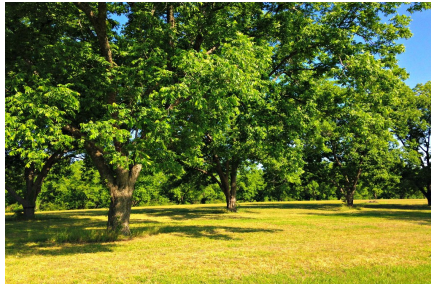
---

**Per Acre Price:** \$2,200.00

**Phone Number:** (912)764-LAND(5263)

**Email:** [info@landanddrivers.com](mailto:info@landanddrivers.com)

**Google Maps link:** [View Larger Map](#)





## Snug Hill Farm

Published on Plantation Properties & Land Investments, LLC (<https://landandrivers.com>)



### PLANTATION PROPERTIES & LAND INVESTMENTS, LLC

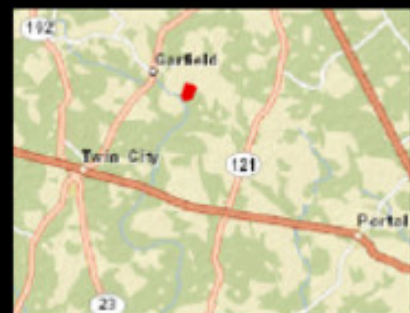
1207 Mount Zion Way, Suite 101 | Statesboro, GA 30458  
© 2012 LAND RIVERS, LLC | 706.776.5588

Justin Williams

This document is not to be altered, copied, or distributed

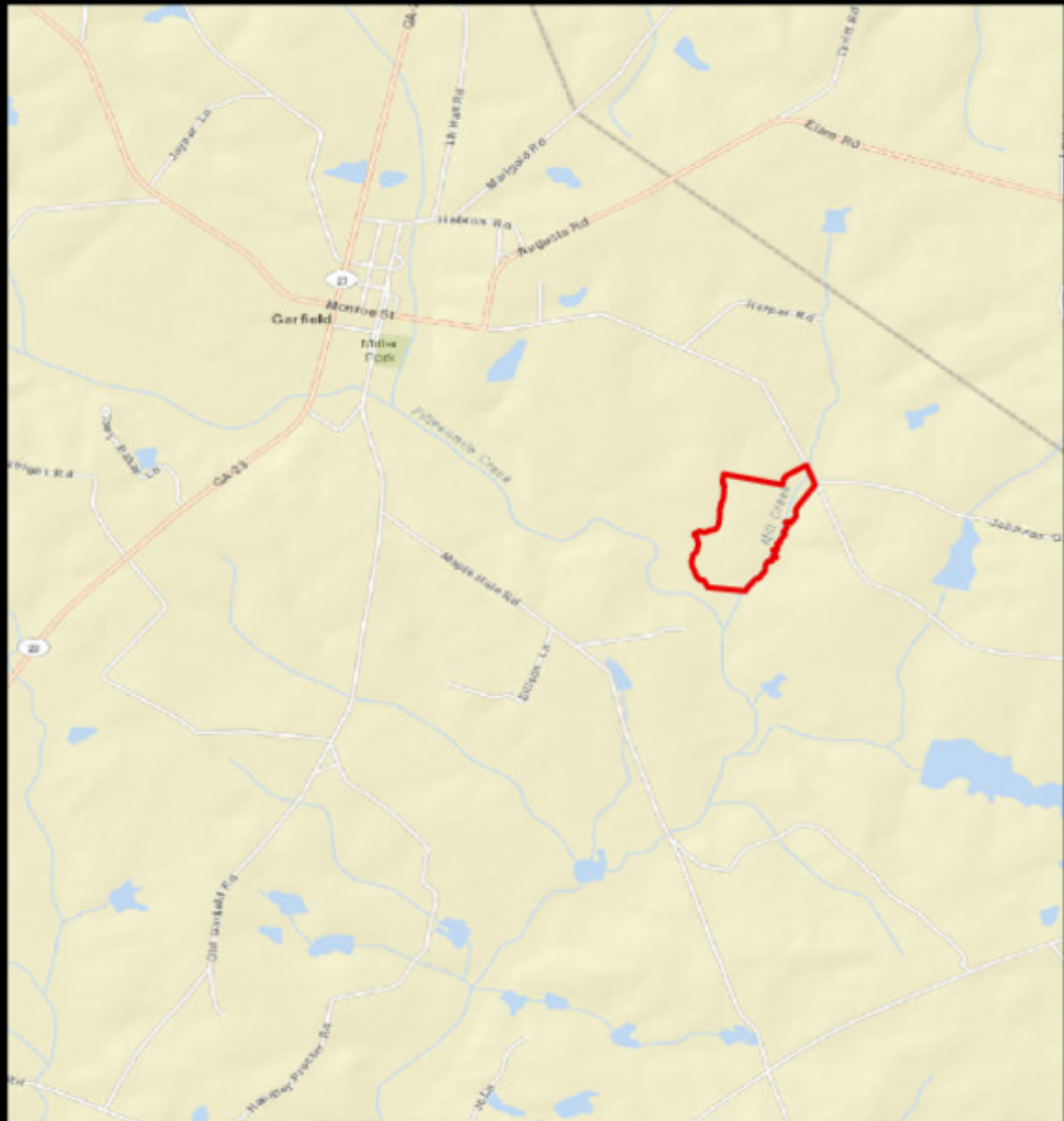
[www.landandrivers.com](https://www.landandrivers.com)

© 2012



# Snug Hill Farm

Published on Plantation Properties & Land Investments, LLC (<https://landandrivers.com>)



## PLANTATION PROPERTIES & LAND INVESTMENTS, LLC

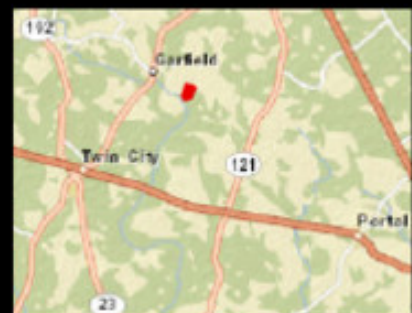
1207 McCloud Way, Suite 101 | Statesboro, GA 30458  
© 2012 LAND INVESTMENTS, LLC | 706.776.5558

Justin Williams

This document is not to be distributed or displayed

[www.landandrivers.com](https://www.landandrivers.com)

© 2012

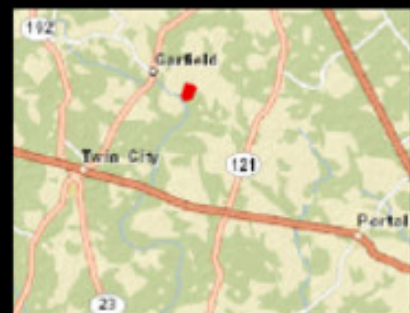






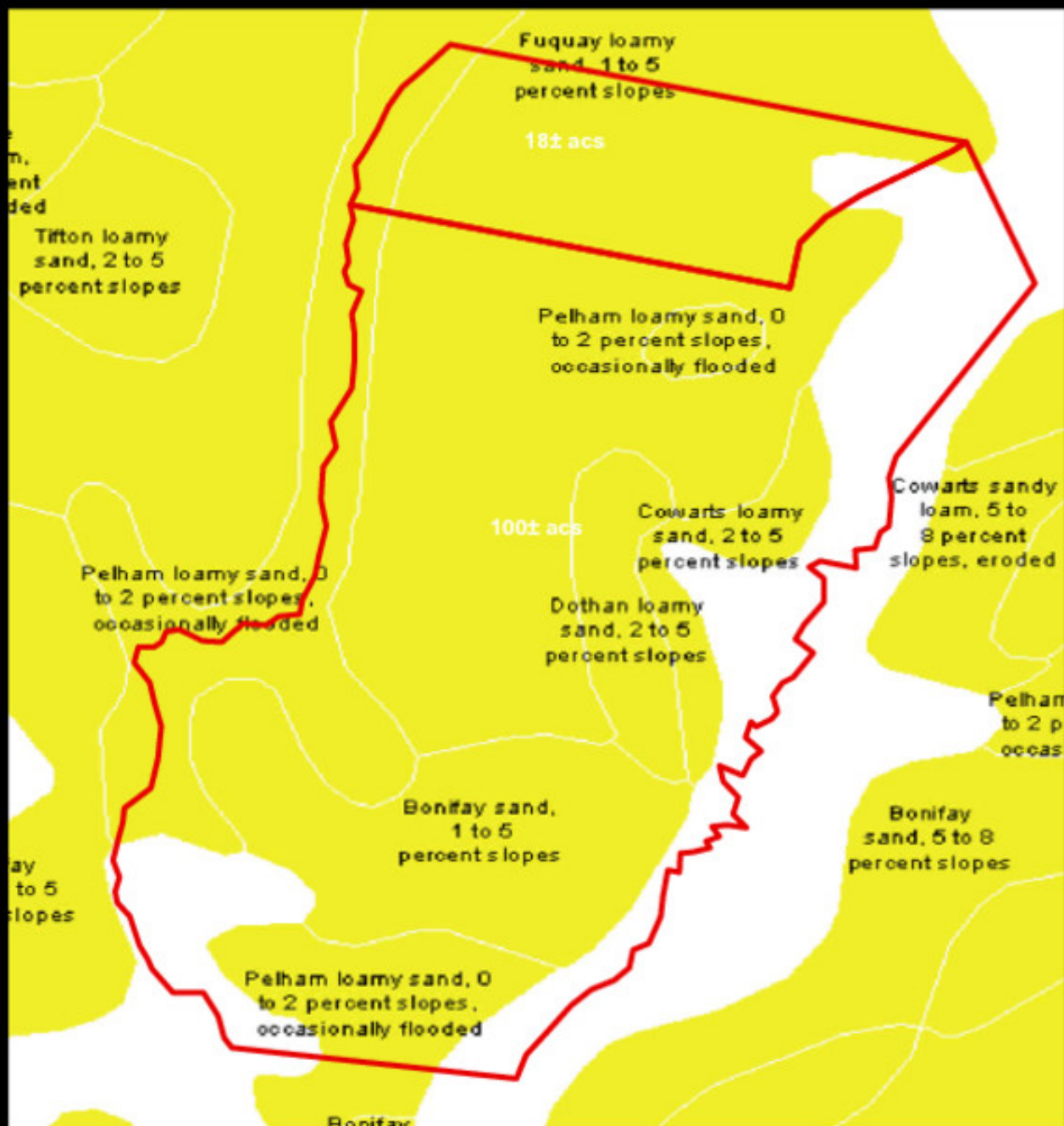
**PLANTATION PROPERTIES  
&  
LAND INVESTMENTS, LLC**

1207 McJannet Way, Suite 101 | Statesboro, GA 30458  
© 2012 LAND RIVERS | 706.776.5588  
Justin Williams  
This document is not to be distributed or displayed  
[www.landandrivers.com](https://www.landandrivers.com)  
© 2012



## Snug Hill Farm

Published on Plantation Properties & Land Investments, LLC (<https://landandrivers.com>)



### PLANTATION PROPERTIES & LAND INVESTMENTS, LLC

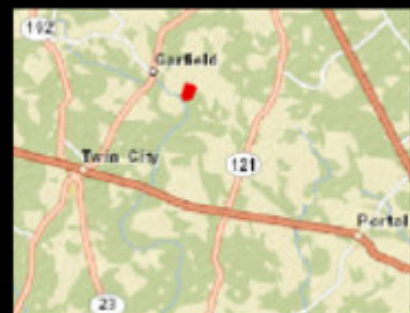
1207 McJannet Way, Suite 101 | Statesboro, GA 30458  
© 2012 LAND INVESTMENTS, LLC | 706.776.5558

Justin Williams

This document is not to be altered or distributed

[www.landandrivers.com](https://landandrivers.com)

© 2012



Source URL: <https://landandrivers.com/property/snug-hill-farm>