

Shellman Bluff Condo

Published on Plantation Properties & Land Investments, LLC (<https://landandrivers.com>)



Shellman Bluff Condo

One-level, no stairs, energy-efficient and move-in ready condo on #4 fairway of the Sapelo Hammock Golf Course in golfing and fishing community of Shellman Bluff, GA. This one-owner unit has two bedrooms, two bathrooms, bonus room suitable as a third bedroom, large living/dining area, kitchen and private patio. Features include high ceilings, heavy molding, granite countertops in kitchen and baths, soaking tub and separate shower in the master bath, ceiling fans and 2-inch window blinds. The monthly association fee is \$200 and includes water, sewer, garbage collection, grounds maintenance and exterior maintenance. Unit 27 is in the building on the left that is a greater distance from the road for added privacy. Ample parking and attractive landscaping. Refrigerator is included. Some furniture may be purchased. Owner is a licensed real estate agent.



Price: \$94,900

Property Type: Residential

Status: Sold

Street/Address: 7272 Shellman Bluff Rd., Unit 27

City: Townsend

State: Georgia

Zip code: 31331

County: mcintosh

Acreage:

Per Acre Price: \$0.00

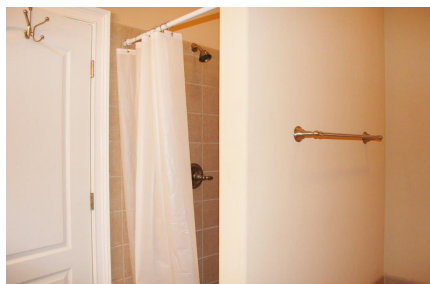
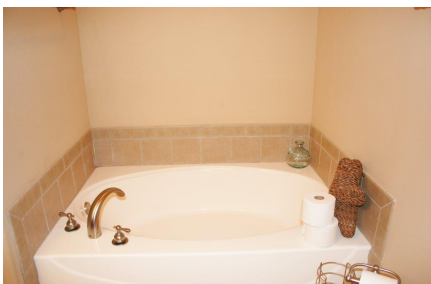
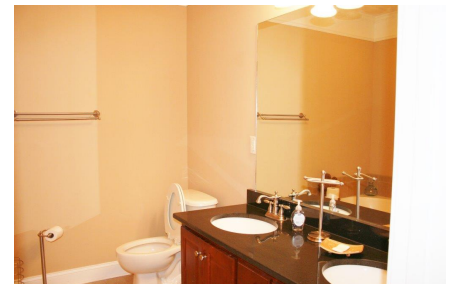
Phone Number: (706) 833-4387

Email: franklin@landandrivers.com

Google Maps link: [View Larger Map](#)

Shellman Bluff Condo

Published on Plantation Properties & Land Investments, LLC (<https://landanddrivers.com>)



Source URL: <https://landanddrivers.com/property/shellman-bluff-condo>