



Altman Farm

The Altman Farms is a beautiful 149± acre farm featuring a majority of cultivated farm land with a small head of woods and a nice pond on the west end of the tract. A wonderful multi-use property! This farm would be a great investment opportunity for any buyer. There is also a small 1950's farm house located on the property, with a well and power already in place. Located just outside of Statesboro, GA off HWY 301 on Clito Road and T.H. Lee road. Only minutes from Georgia Southern University or the Hospital and you can be in Savannah in an hour or less. Make this property your new farm, weekend retreat, home site or venture property. Enjoy farming, hunting, fishing, camping and more all on your own land. Let us know if you have an interest in this charming place and we will make arrangements to show you this property. 912.764.LAND(5263)



Price: \$310,000

Property Type: Land

Status: Sold

Street/Address: 6995 Clito Rd

City:

State: Georgia

Zip code: 30461

County: bulloch

Acreage: 101

Per Acre Price: \$0.00

Phone Number: (912)764-LAND(5263)

Email: info@landanddrivers.com

Google Maps link: [View Larger Map](#)

Altman Farm

Published on Plantation Properties & Land Investments, LLC (<https://landandrivers.com>)





**PLANTATION PROPERTIES
&
LAND INVESTMENTS, LLC**

1782 Riverbank Way, Suite 100 | Statesboro, GA 30458

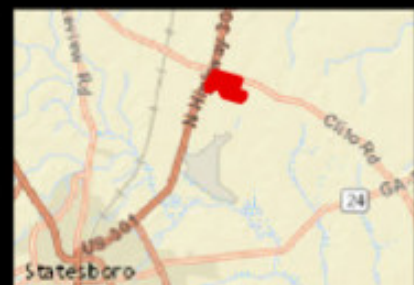
912.794.LAND (5263) | 706.726.5038

J. ROD WILLIAMS

*This document is not to be distributed or reproduced

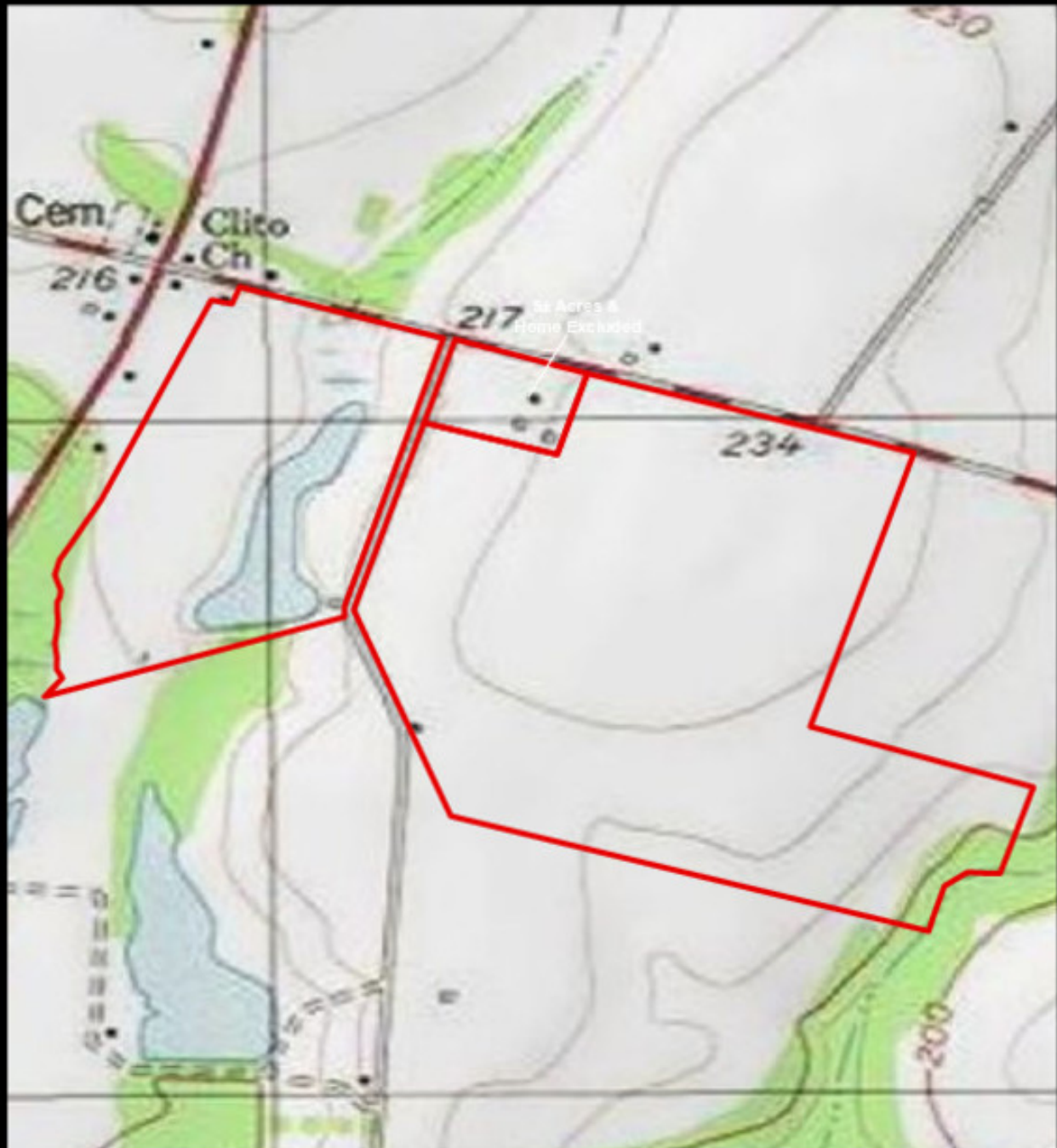
www.landandrivers.com

© 2017



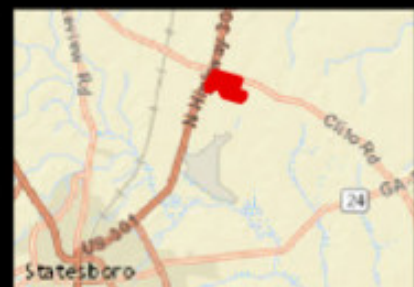
Altman Farm

Published on Plantation Properties & Land Investments, LLC (<https://landanddrivers.com>)



PLANTATION PROPERTIES & LAND INVESTMENTS, LLC

1782 Riverbank Way, Suite 101 | Statesboro, GA 30458
912.794.1444 | 912.794.5038
Jared Williams
This document is not to be distributed or reproduced
www.landanddrivers.com
© 2017



Source URL: <https://landanddrivers.com/property/altman-farm>