



214±acs | Spencer Pines

214± acre Timber/Recreational tract, Spencer Pines is located on Spencer Road off Hiltonia Road just outside of Millen, GA. A wonderful multi-use property! This property offers lots of diversity, featuring a nice mixture of both young and older pines, natural wood and some clear cut. A great tract for someone as a timber investment or personal recreational property. The acreage breakdown is 100±acres of clear cut, 20±acres of natural wood, 15±acres of 15 year old planted pines and 68±acres of 6 year old planted pines. Perfect for hunting, camping, trail rides and more. Ideal for a country get-a-way or build your dream home on your own private acreage. The calm seclusion is just right for those seeking to relax from all the hustle and bustle. Only 40 minutes from Statesboro and about 1½ hours from Savannah, GA. Call today for more detail or to see this farm 912.764.LAND!



Price: \$282,480

Property Type: Land

Status: Sold

Street/Address: Spencer Road

City: millen

State: Georgia

Zip code: 30442

County: jenkins

Acreage: 214

Per Acre Price: \$1,320.00

Phone Number: (912)764-LAND(5263)

Email: info@landanddrivers.com

Google Maps link: [View Larger Map](#)

214±acs | Spencer Pines

Published on Plantation Properties & Land Investments, LLC (<https://landandrivers.com>)





**PLANTATION PROPERTIES
&
LAND INVESTMENTS, LLC**

1205 Merchants Way, Suite 100, Savannah, GA 30420

912 364-1AND (5243) 706 726 5P20

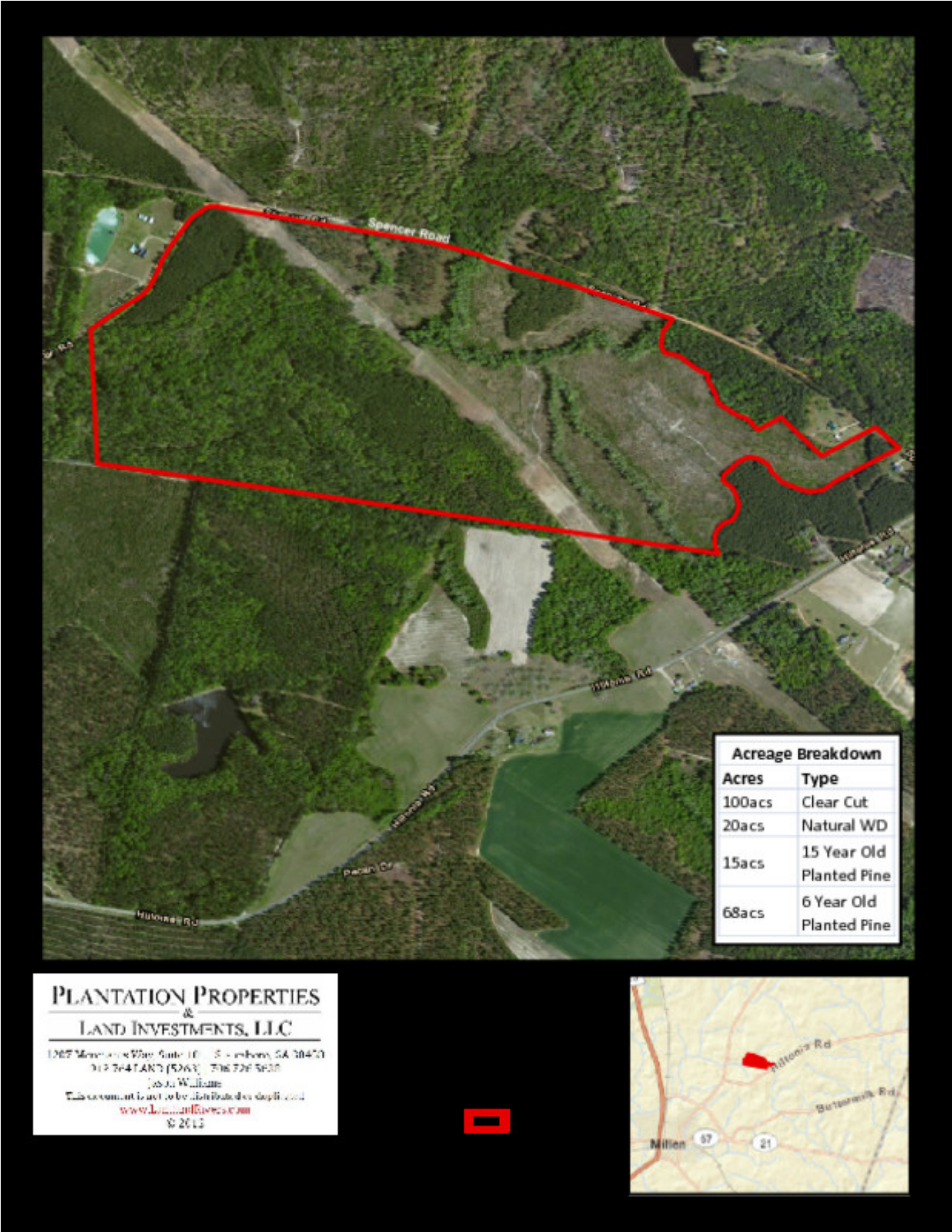
Joan Williams

This document is not to be distributed or duplicated

www.LandandDrivers.com

© 2012





Source URL: <https://landanddrivers.com/property/214%C2%B1acs-spencer-pines>