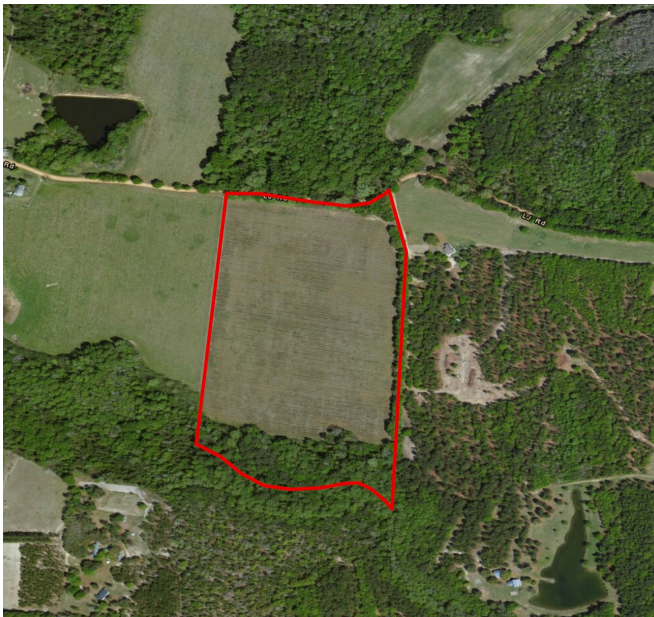




39± acs | Daisy Nevils Farm

Delightful 39± acre farm in Daisy, GA. Located only 10 miles from I-16 at the Statesboro exit. This Evans county farm features 28± acres of long leaf pines planted in 2008 with a nice border of hardwoods on the back of the property. The pine plantation is approximately 6 years old and they are currently in a CRP program where the owner receives an annual payment of \$1862. A wonderful multi-use property with deer and turkey signs everywhere! Ideal for a small hunting tract, timber investment, weekend retreat, venture property or build your dream home and enjoy all the beauty this land has to offer. Only an hour from Savannah, 25 minutes to Statesboro or 10 minutes to Claxton. Call today for details or to set up a showing on this property. 912.764.LAND(5263) - photos coming soon!



Price: \$125,000

Property Type: Land

Status: Sold

Street/Address: LJ Road

City: claxton

State: Georgia

Zip code: 30417

County: evans

Acreage: 39

Per Acre Price: \$3,169.00

Phone Number: 912.764.LAND(5263)

Email: jasonwilliams@landandrivers.com

Google Maps link: [View Larger Map](#)

Aerial Map



**PLANTATION PROPERTIES
&
LAND INVESTMENTS, LLC**

1207 M - Hunt - Way, Suite 101 | Statesboro, GA 30458

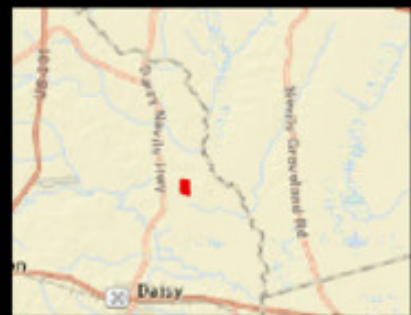
612 786-1440 (5253) | 706 776-5588

Justin Williams

This document is not to be altered or reprinted

www.landandrivers.com

© 2017



39± acs | Daisy Nevils Farm

Published on Plantation Properties & Land Investments, LLC (<https://landandrivers.com>)

Source URL: <https://landandrivers.com/property/39%C2%B1-ac-daisy-nevils-farm>