



393± acs | Midland Tract

Nice land at a great price! Hunting & Wildlife Retreat located between Rincon and Guyton on Midland road off Blue Jay road. This 393± acre tract has plenty to offer. A great multi-use property, perfect for an investment tract. Only 10 minutes from Rincon, 20mins from Pooler or you can be in downtown Savannah in less than 30mins. This place is also loaded with deer, duck and turkey signs and has excellent habitat for the wildlife. This property would make a great recreational tract, homesite, weekend retreat or venture property. A MUST SEE!!! Call Jason Today!
912.764.LAND(5263)



Price: \$393,000

Property Type: Land

Status: Sold

Street/Address: Midland Road & Zipper Road

City: rincon

State: Georgia

Zip code: 31326

County: effingham

Acreage: 393

Per Acre Price: \$1,000.00

Phone Number: 912.764.LAND(5263)

Email: jasonwilliams@landandrivers.com

Google Maps link: [View Larger Map](#)

393± acs | Midland Tract

Published on Plantation Properties & Land Investments, LLC (<https://landandrivers.com>)



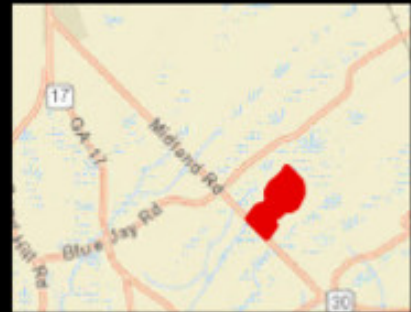
Aerial Map

393± acs | Midland Tract

Published on Plantation Properties & Land Investments, LLC (<https://landandrivers.com>)



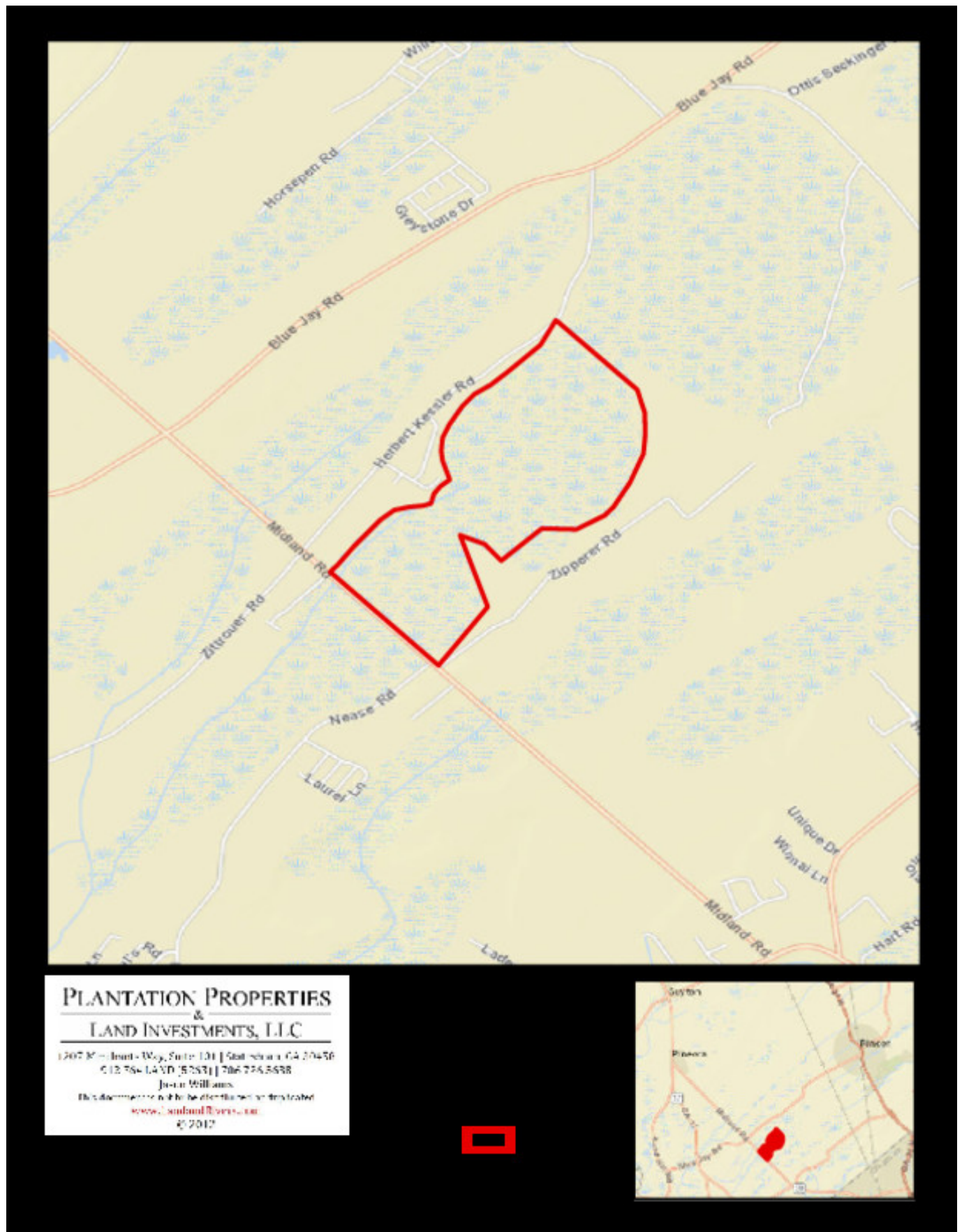
**PLANTATION PROPERTIES
&
LAND INVESTMENTS, LLC**
1207 K - Hunt - Way, Suite 100 | Statesboro, GA 30458
© 12.75± LAND (5253) | 706.776.5588
Justin Williams
This document is not to be distributed or displayed
www.landandrivers.com
© 2017



Location Map

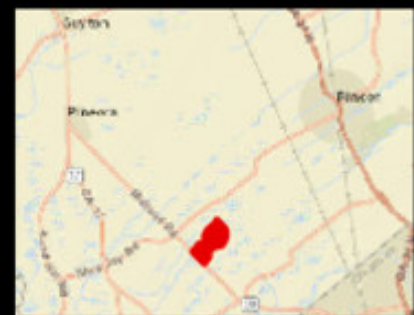
393± acs | Midland Tract

Published on Plantation Properties & Land Investments, LLC (<https://landanddrivers.com>)



**PLANTATION PROPERTIES
&
LAND INVESTMENTS, LLC**

1207 K - Hunt-Way, Suite 100 | State Beach, GA 30456
© 12.75± LAND (5283) | 706.276.5588
Justin Williams
This document is not to be distributed or displayed
www.landanddrivers.com
© 2017



Source URL: <https://landanddrivers.com/property/393%C2%B1-acs-midland-tract>