

Durden Farms Tract 2

Published on Plantation Properties & Land Investments, LLC (<https://landandrivers.com>)



Durden Farms Tract 2

Durden Farms Tract 2 | 244±acs

Durden Farms Tract 2 is 244.6 acres of farm and timberland. A nice diverse tract that features mature pine, hardwood and cultivated farmland. There is a good mixture hardwood drains and of three different age pine groups, the various ages of loblolly pine plantation were planted in 80, 85 and 97. The open acreage consists of two fields totaling approximately 97± acres and makes for a nice variety on this farm as well as added forage for the abundant wildlife. Not only is this farm an excellent investment opportunity, but as a hunting/recreation property this tract is truly ideal. All the cropland is surrounded by forested acres and makes the perfect habitat for all sort of wild game. Deer, turkey, quail, ducks and more are all a common site on this farm. Located on Canoochee Bypass just northeast of Swainsboro, Ga in the small community of Garfield, GA. A Perfect multi-use property! Make this farm your new timber investment, weekend hunting retreat, home site or venture property. Enjoy hunting, trail rides, camping and more all on your own land. Let us know if you have interest in this excellent tract and we will make arrangements to show you this property. 912.764.LAND(5263)



Price: \$587,040

Property Type: Land

Status: Sold

Street/Address: Canoochee Bypass

City: Garfield

State: Georgia

Zip code: 30425

County: emanuel

Acreage: 245

Per Acre Price: \$2,400.00

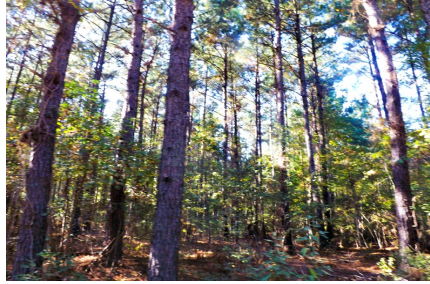
Durden Farms Tract 2

Published on Plantation Properties & Land Investments, LLC (<https://landandrivers.com>)

Phone Number: 912.764.LAND(5263)

Email: jasonwilliams@landandrivers.com

Google Maps link: [View Larger Map](#)



Aerial Map

Durden Farms Tract 2

Published on Plantation Properties & Land Investments, LLC (<https://landandrivers.com>)



PLANTATION PROPERTIES & LAND INVESTMENTS, LLC

1207 N. Mount Way, Suite 101 | Statesboro, GA 30458
© 2012 LAND INVESTMENTS, LLC | 706.776.5558
Justin Williams
This document is not to be altered or distributed
www.landandrivers.com
© 2012



Source URL: <https://landandrivers.com/property/durden-farms-tract-2>