



## **795±acs | Alma Woods**

Alma Woods is an ideal timberland investment and recreational tract located in Alma, GA on Springfield Church Road. This 795± acre tract has excellent diversity with multiple age class pines plantation and some natural hardwood bottoms. This is a nice large tract and is surrounded by more timberland making a great habitat for deer and other wildlife. This area is well known for its high quality timberland presence and excellent hunting. Make this property your new timber investment, weekend retreat, home site or venture property. Located about 15 mins south of Baxley off HWY 23. Only 30 mins from Waycross, GA and 40 mins from Jesup, GA. Call Jason Today for more details on this timberland tract 912.764.LAND(5263)



**Price:** \$1,669,500  
**Property Type:** Land  
**Status:** Sold  
**Street/Address:** Springfield Church Road  
**City:** Alma  
**State:** Georgia  
**Zip code:** 31510  
**County:** Bacon  
**Acreage:** 795  
**Per Acre Price:** \$2,100.00  
**Phone Number:** 912.764.LAND(5263)  
**Email:** [jasonwilliams@landandrivers.com](mailto:jasonwilliams@landandrivers.com)  
**Google Maps link:** [View Larger Map](#)

## 795±acs | Alma Woods

Published on Plantation Properties & Land Investments, LLC (<https://landandrivers.com>)

---



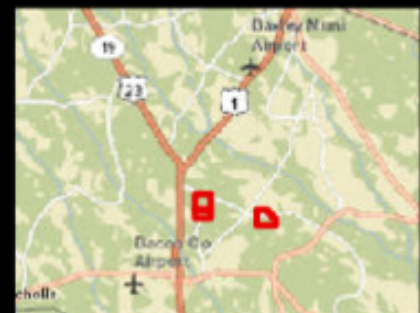
## Aerial Map

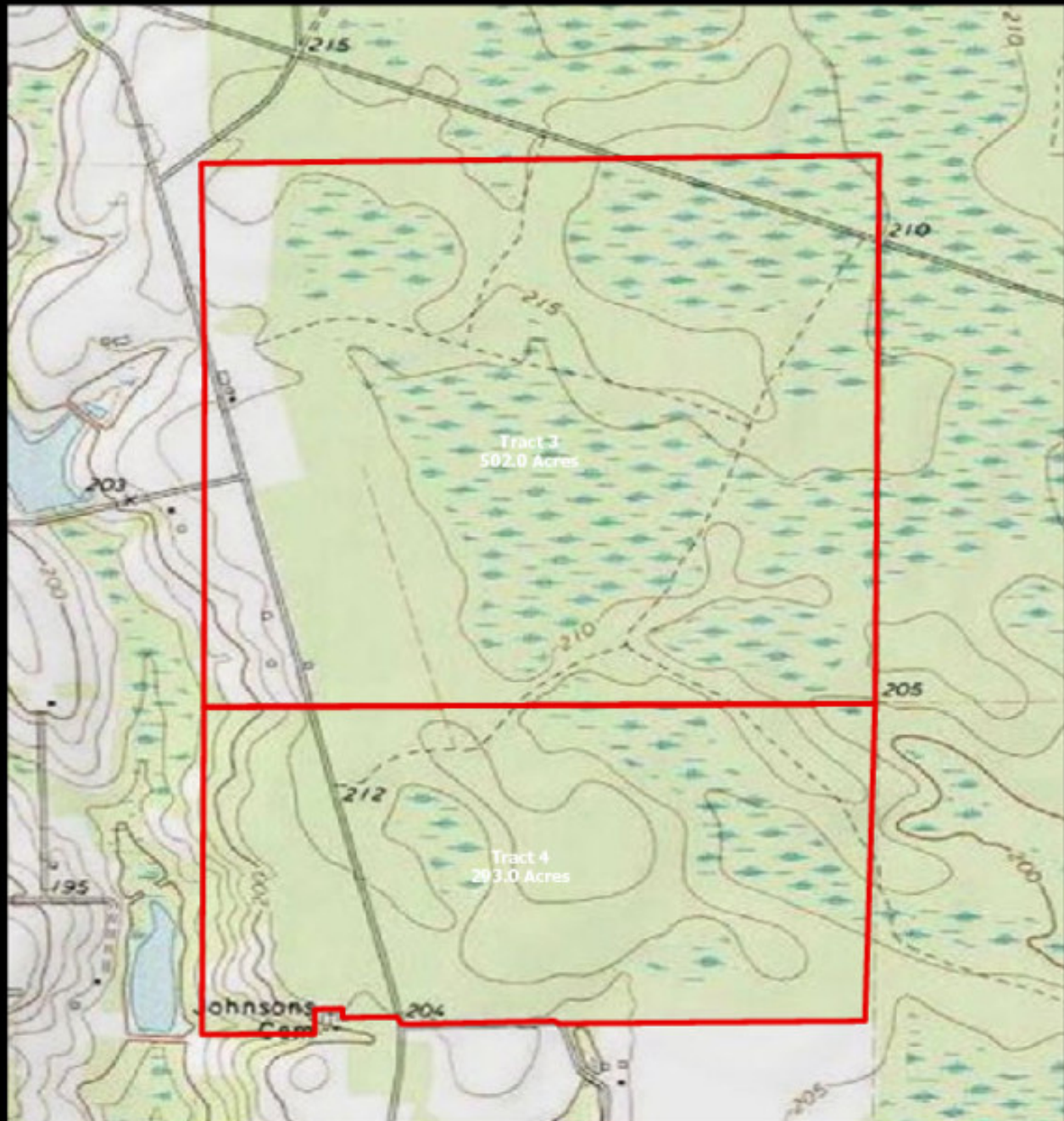




**PLANTATION PROPERTIES  
&  
LAND INVESTMENTS, LLC**

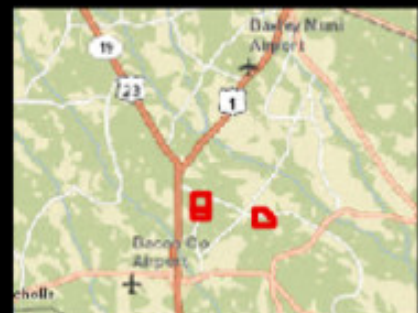
12174 Warden Ave, Suite 100 | Jacksonville, FL 32216  
912.304.1611 | 706.725.5038  
Jesse Williams  
This document is not to be distributed or duplicated  
[www.LandandRivers.com](https://www.LandandRivers.com)  
© 2019





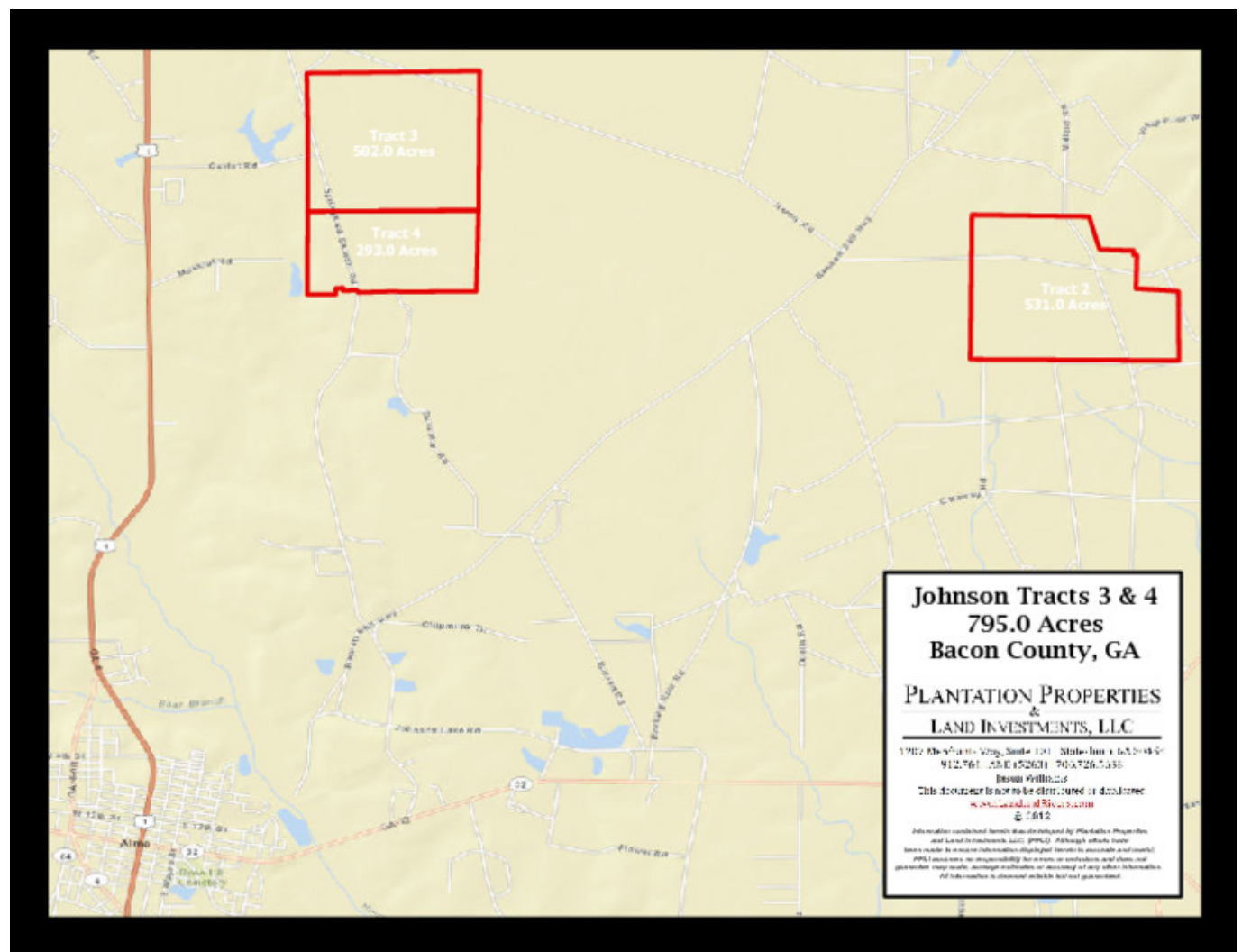
**PLANTATION PROPERTIES  
&  
LAND INVESTMENTS, LLC**

12174 Hardgate Way, Suite 100 | Savannah, GA 31906  
912.364.1610 | (770) 706.725.5638  
JASON WILLIAMS  
This document is not to be distributed or duplicated  
[www.LandandRivers.com](https://www.LandandRivers.com)  
© 2019



## Location Map





Source URL: <https://landanddrivers.com/property/795%C2%B1acs-alma-woods>