



## Meridy Rd Tract

NEW! 30± acre Timber/Recreation tract in Candler Co. Located on the Bulloch/Candler county line off Portal Metter Hwy on Meridy Road. This property offers lots of variety, featuring a nice growth of all natural long leaf site trees and a small pond. This tract is high and dry and would make a great timber investment with a nice stand of merchantable trees. Deer, duck and turkey are a common sight on this property with the pond and natural timber habitat. Property is in a good location, only 15 minutes from Statesboro or Metter and an hour from Savannah, GA. Make this property your new farm, weekend retreat, home site, hunting tract or venture property. Enjoy fishing, hunting, camping and more all on your own land. Let us know if you have an interest and we will make arrangements to show you this property. 912.764.LAND(5263)



**Price:** \$75,000

**Property Type:** Land

**Status:** Sold

**Street/Address:** 0 Meridy Rd

**City:** Metter

**State:** Georgia

**Zip code:** 30439

**County:** candler

**Acreage:** 30

**Per Acre Price:** \$2,500.00

**Phone Number:** 912.764.LAND(5263)

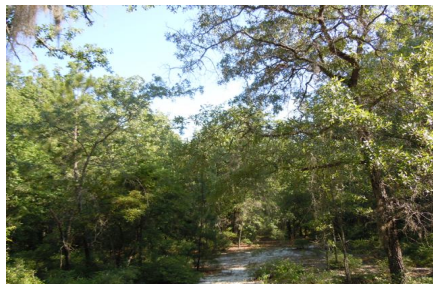
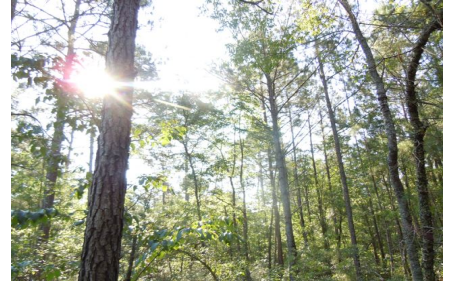
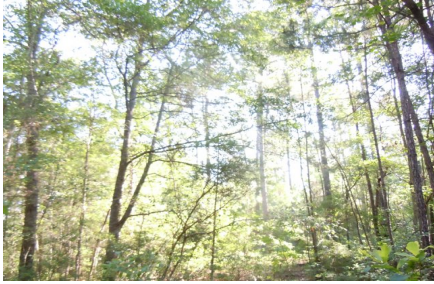
**Email:** [info@landandrivers.com](mailto:info@landandrivers.com)

**Google Maps link:** [View Larger Map](#)

# Meridy Rd Tract

Published on Plantation Properties & Land Investments, LLC (<https://landandrivers.com>)

---



## Aerial Map

# Meridy Rd Tract

Published on Plantation Properties & Land Investments, LLC (<https://landandrivers.com>)



**PLANTATION PROPERTIES**  
&  
**LAND INVESTMENTS, LLC**

1207 Merchants Way, Suite 101 | Statesboro, GA 30980  
912.764.LAND (5263) | 706.726.5698  
Jason Williams  
This document is not to be distributed or duplicated  
[www.LandandRivers.com](http://www.LandandRivers.com)  
3/2/17



## Topo Map

# Meridy Rd Tract

Published on Plantation Properties & Land Investments, LLC (<https://landandrivers.com>)



**PLANTATION PROPERTIES**  
&  
**LAND INVESTMENTS, LLC**

1207 Meridiana Way, Suite 101 | Statesboro, GA 30910  
912.764.LAND (5263) | 706.726.5698  
Jason Williams  
This document is not to be disseminated or duplicated  
[www.LandandRivers.com](http://www.LandandRivers.com)  
©2017



Source URL: <https://landandrivers.com/property/meridy-rd-tract>