



Old Mill Pond Farm

Old Mill Pond Farm is a nice 220± acre farm featuring a 6± acre pond in Candler Co. This farm has good soils and would make a great investment. Priced to sell at \$1600/acre. The property offers 120± acres of tillable crop land which is currently being farmed or could easily be fenced and planted in grass for cattle and/or horses. There is an additional 60± acres of pine plantation that has recently been clear cut that could be put into fields for row crop or replanted for timber growth. The pond, hardwood branches and creek also add interest to the property, as well as making a nice habitat for all kinds of wildlife. Loaded with deer, turkey, ducks, fish and more. Located in the heart of farm country on the Emanuel/Candler county line off Rosemary Church Road on Will E Rushton Road and Old Mill Pond Road. A great location between Metter and Swainsboro. This property would make for a very nice investment, home site, weekend retreat, acreage tract or hunting/recreational land. Let us know if you have an interest, we would love to show you this property.

912.764.LAND(5263)



Price: \$352,000

Property Type: Land

Status: Sold

Street/Address: Big Barn Road

City: Metter

State: Georgia

Zip code: 30439

County: candler

Acreage: 220

Per Acre Price: \$1,600.00

Phone Number: 912.764.LAND(5263)

Email: info@landandrivers.com

Old Mill Pond Farm

Published on Plantation Properties & Land Investments, LLC (<https://landandrivers.com>)

Google Maps link: [View Larger Map](#)



Aerial Map

Old Mill Pond Farm

Published on Plantation Properties & Land Investments, LLC (<https://landandrivers.com>)



PLANTATION PROPERTIES & LAND INVESTMENTS, LLC

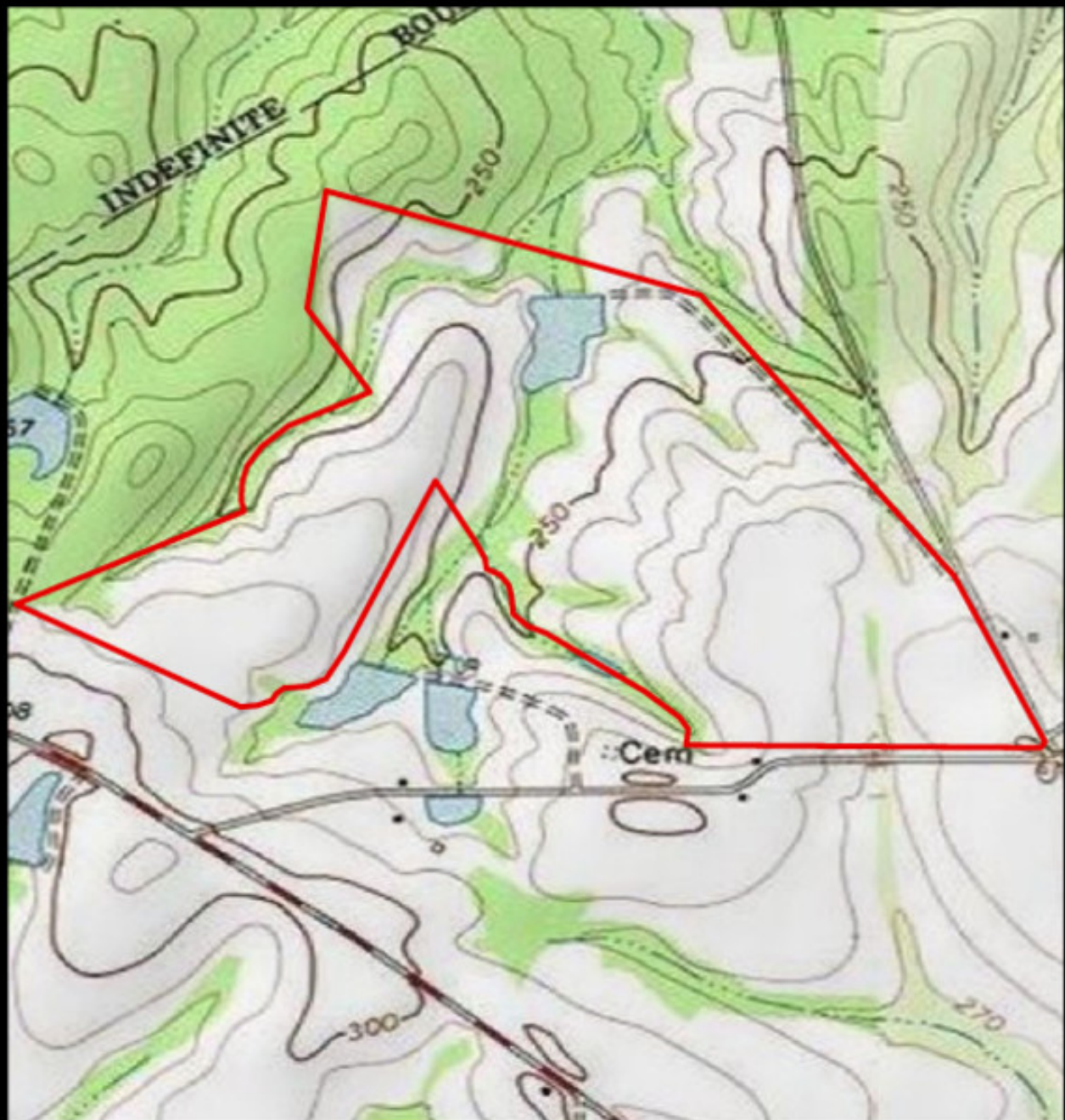
1207 Merchants Way, Suite 101 | Statesboro, GA 30910
912.764.LAND (5263) | 706.726.5698
Jason Williams
This document is not to be distributed or duplicated
[www.LandAndRivers.com](https://landandrivers.com)
3/29/17



Topo Map

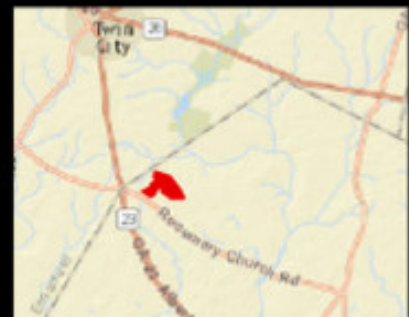
Old Mill Pond Farm

Published on Plantation Properties & Land Investments, LLC (<https://landandrivers.com>)



PLANTATION PROPERTIES & LAND INVESTMENTS, LLC

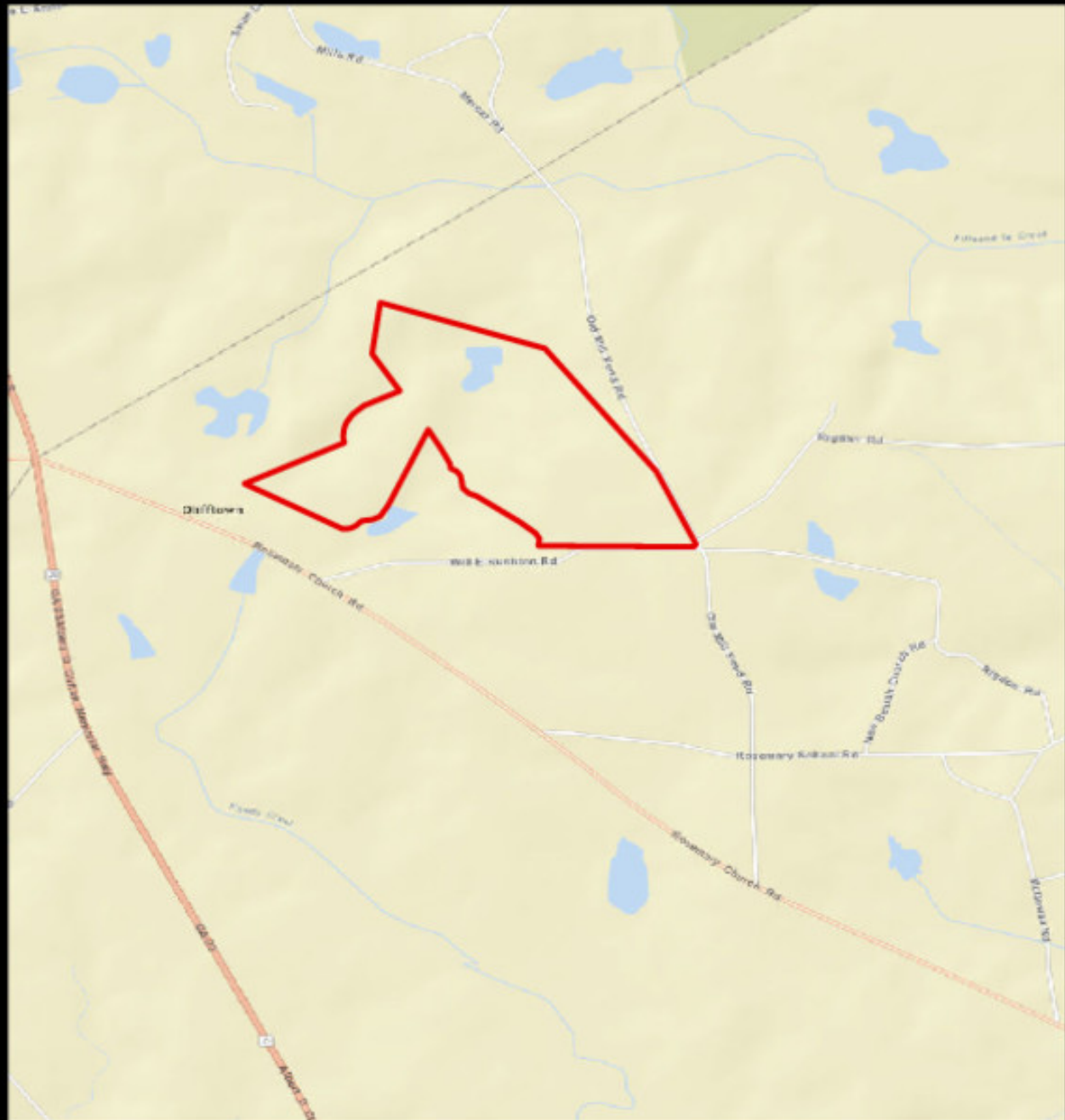
1207 Merchants Way, Suite 101 | Statesboro, GA 30980
912.764.LAND (5263) | 769.726.5698
Jason Williams
This document is not to be distributed or duplicated
[www.LandAndRivers.com](https://landandrivers.com)
3/29/17



Location Map

Old Mill Pond Farm

Published on Plantation Properties & Land Investments, LLC (<https://landanddrivers.com>)



PLANTATION PROPERTIES
-&-
LAND INVESTMENTS, LLC

1207 Merchants Way, Suite 101 | Statesboro, GA 30980
912.764.LAND (5263) | 706.726.5668
Jason Williams
This document is not to be distributed or duplicated
[www.LandandDrivers.com](https://landanddrivers.com)
3/29/17



Source URL: <https://landanddrivers.com/property/old-mill-pond-farm>