



Adabelle Farm

This diverse farm is comprised of approximately 212 acres in irrigated cropland, 5 acres of dry cropland, 127 acres of woodland, and a 10 acre man-made pond. Highly productive soil types that make up the cultivated acreage are Tifton and Fuquay series soils. Some of the woodland area is convertible to cropland and the balance is a mixture of natural pine and hardwood timber offering a longer-term return. The 10 acre pond serves as a reservoir and water storage for the irrigation system.

This highly productive southeast Georgia farm lies 12 miles SW of Statesboro, GA and convenient to I-16 on a county paved road. Savannah, GA lies approximately 54 miles east of the property.



Price: \$1,175,000
Property Type: Land
Status: Sold
Street/Address: Adabelle Road
City:
State: Georgia
Zip code: 30458
County: bulloch
Acreage: 354
Per Acre Price: \$3,317.00
Phone Number:
Email:
Google Maps link: [View Larger Map](#)

Adabelle Farm

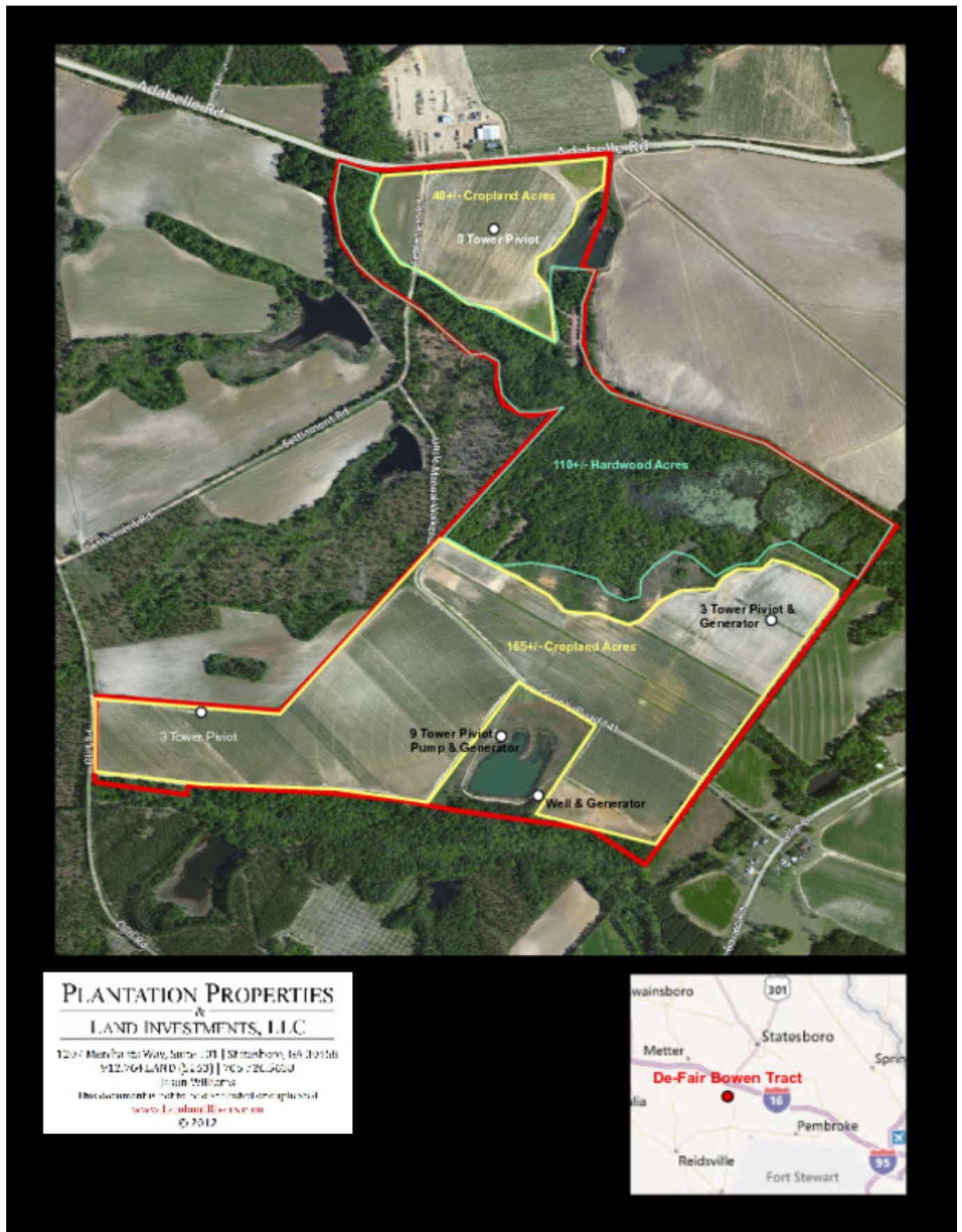
Published on Plantation Properties & Land Investments, LLC (<https://landandrivers.com>)



Aerial

Adabelle Farm

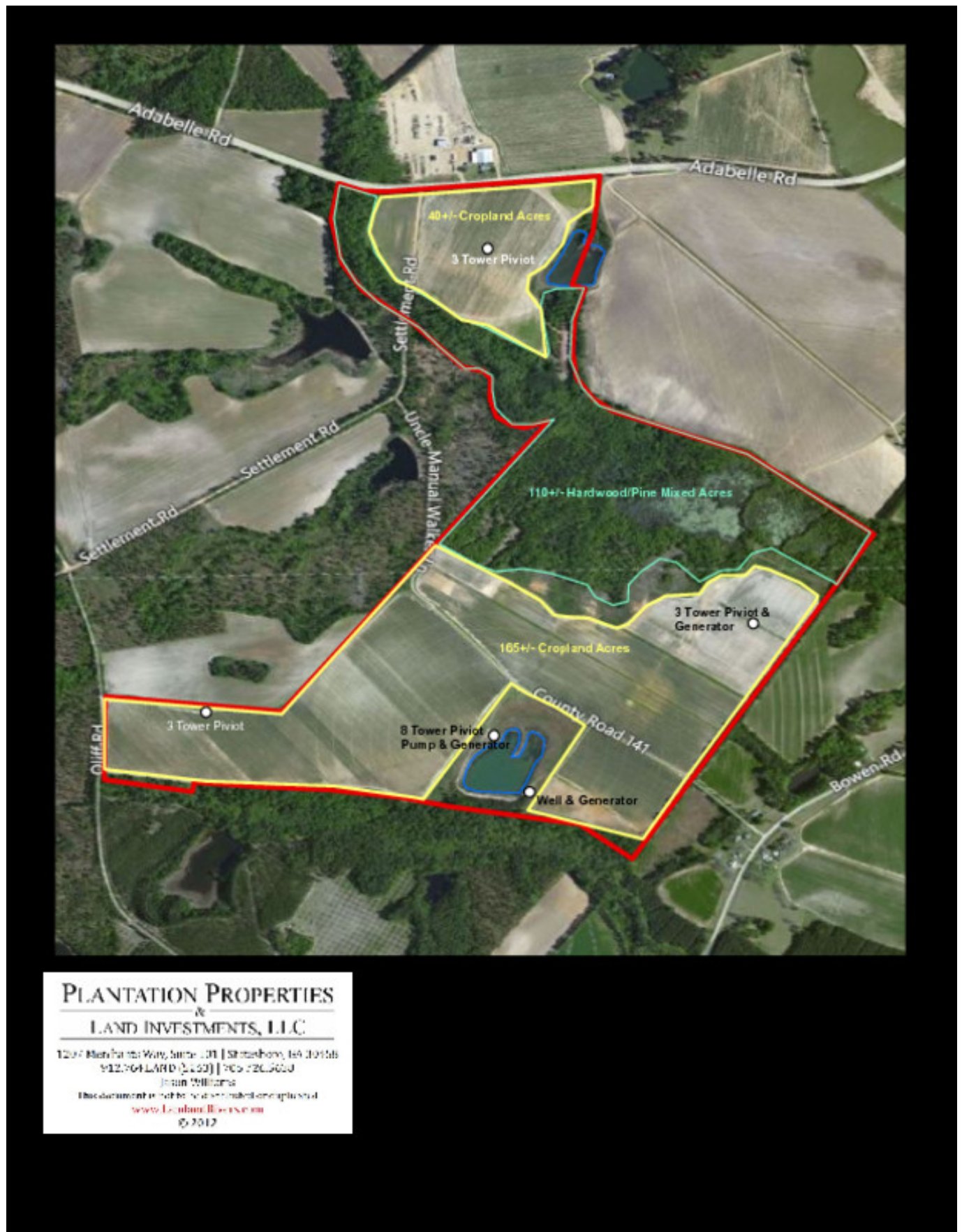
Published on Plantation Properties & Land Investments, LLC (<https://landanddrivers.com>)



Aerial 2

Adabelle Farm

Published on Plantation Properties & Land Investments, LLC (<https://landanddrivers.com>)



PLANTATION PROPERTIES & LAND INVESTMENTS, L.L.C.

1207 Merchants Way, Suite 101 | Statesboro, GA 30458
912.764.LAND (5255) | 909.720.5000

Joan Williams

This document is not to be disseminated or published

www.LandandDrivers.com

© 2012

Source URL: <https://landanddrivers.com/property/adabelle-farm>