



## **145±acs | Springhead Road**

Bank Owned! 150± Acres with beautiful log home in Screven Co. A nice versatile property! Located south of Sylvania off Highway 301 on Springhead Road. This property features natural wooded land, open land, planted pines and a lovely log home. Deer, duck and turkey are a common sight on this property which is not surprising with this mix of diversity and natural habitat. A great tract for someone as a wonderful country home or as a personal recreational property. The home is 2,311 square feet with 3 bedroom and 3 bathrooms and was built in 2008. A great open floor plan with stone fireplace, two-story vaulted great room, beautiful pine walls throughout and much more! The rustic charm of this house is perfect for the wooded acreage it sits on. This property would make for a nice investment, home place, weekend retreat, acreage tract or hunting/recreational land. Property is in a good location, less than 30 min from Statesboro, GA or only a little over an hour from Savannah, GA. Bank-owned property. Call Jason Williams for more information on this property. (912)764-LAND (5263)



**Price:** \$420,000

**Property Type:** Bank-Owned

**Status:** Sold

**Street/Address:** 559 Springhead Road

**City:** Sylvania

**State:** Georgia

**Zip code:** 30467

**County:** screven

**Acreage:** 145

**Per Acre Price:** \$0.00

**Phone Number:** 912.764.5263(LAND)

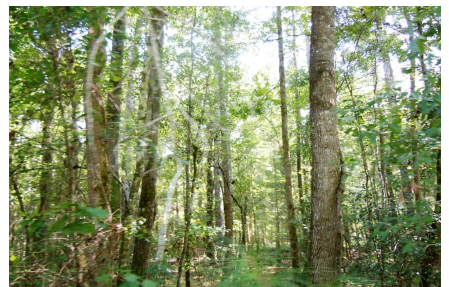
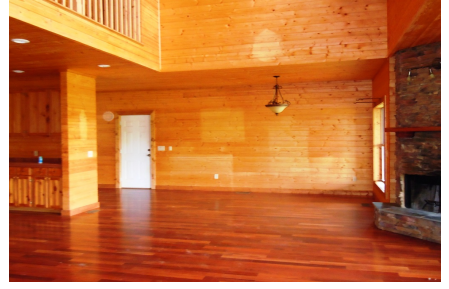
**Email:** [info@landandrivers.com](mailto:info@landandrivers.com)



**145±acs | Springhead Road**

Published on Plantation Properties & Land Investments, LLC (<https://landandrivers.com>)

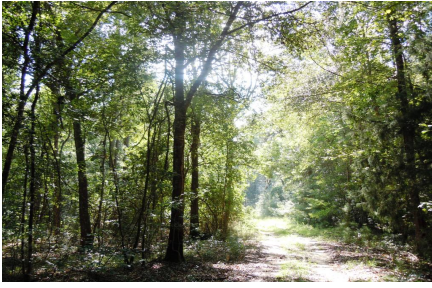
Google Maps link: [View Larger Map](#)



## 145±acs | Springhead Road

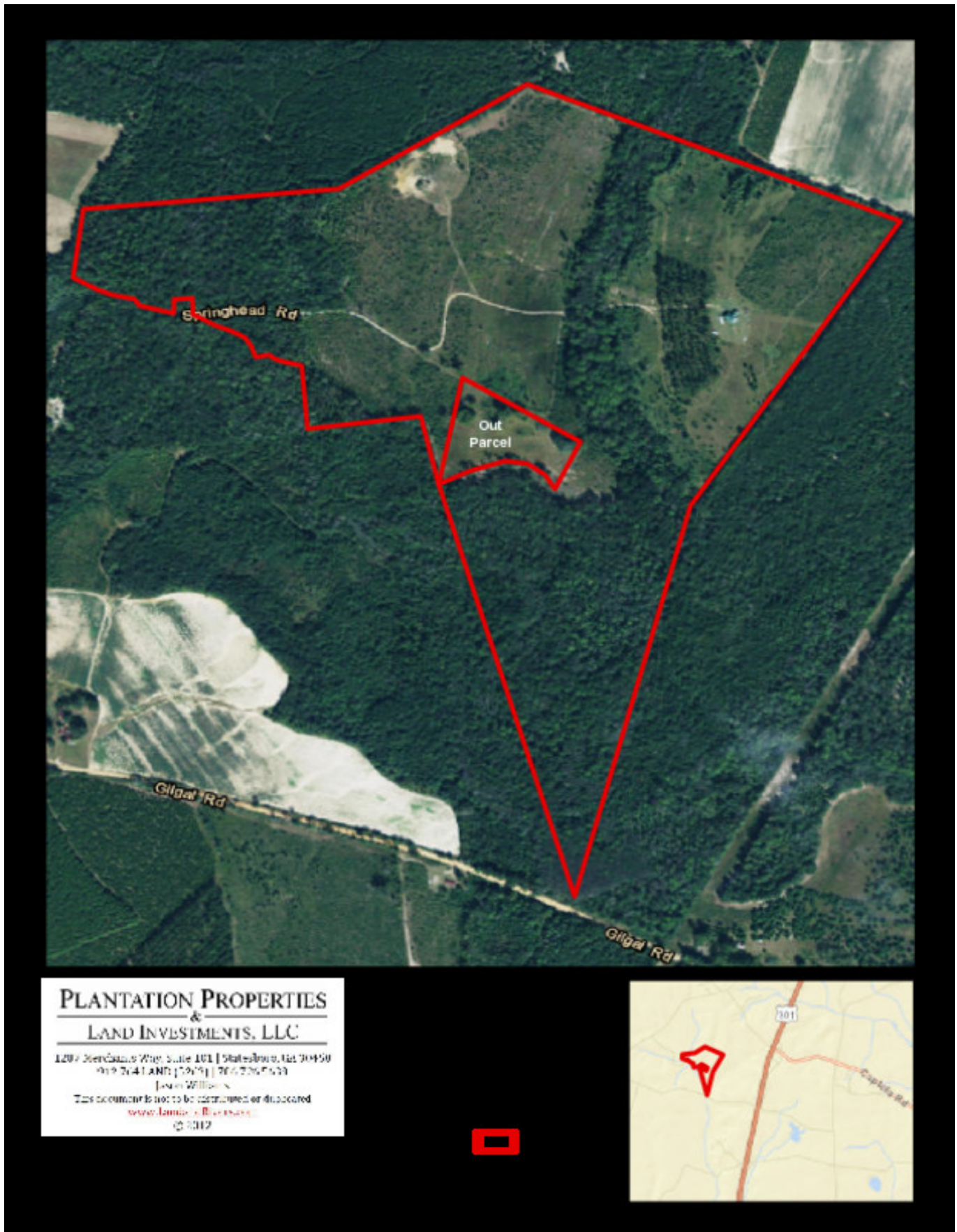
Published on Plantation Properties & Land Investments, LLC (<https://landandrivers.com>)

---



## Aerial Map

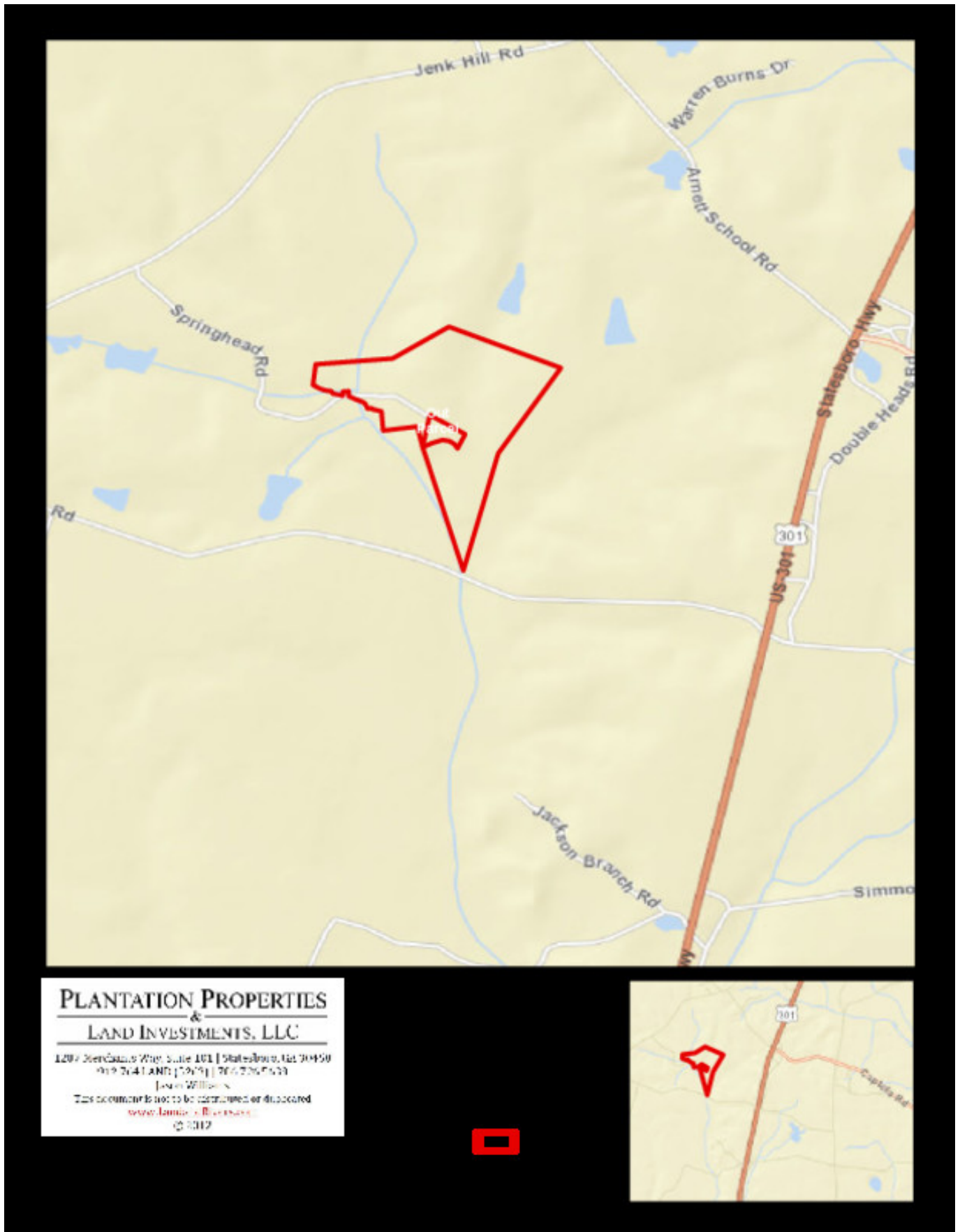




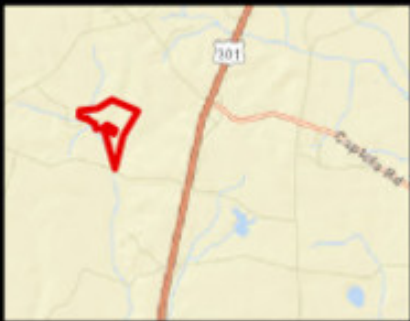
## Location Map

**145±acs | Springhead Road**

Published on Plantation Properties & Land Investments, LLC (<https://landanddrivers.com>)



**PLANTATION PROPERTIES  
&  
LAND INVESTMENTS, LLC**  
1207 Merchants Way, Suite 101 | Statesboro, GA 30450  
919.764.1AND | 706.726.7633  
Jason Williams  
This document is not to be construed or duplicated  
[www.landanddrivers.com](http://www.landanddrivers.com)  
© 2012



Source URL: <https://landanddrivers.com/property/145%C2%B1acs-springhead-road>