

# PLANTATION PROPERTIES & LAND INVESTMENTS, LLC

## Cowart Lane Tract

26± acre recreational tract in Screven Co. The Cowart Lane Tract is located just north of Newington, Ga off Highway 21 and Sheppard Switch Rd. on Cowart Lane. A nice versatile property! This property featuring a nice growth of natural wood and rolling drains. Deer, duck and turkey are a common sight on this property which is not surprising with all the natural habitat. A great tract for someone as a small personal recreation property or a home site in the country. Ideal for a hunting retreat, weekend get-a-way, home site or as an investment. The calm seclusion is just right for those seeking to relax from all the hustle and bustle. Only a little over an hour from Savannah, GA or about 30mins from Statesboro. Call today for more detail or to see this tract 912.764.LAND!



**Price:** \$65,000

**Property Type:** Land

**Status:** Sold

**Street/Address:** 0 Cowart Lane

**City:** Newington

**State:** Georgia

**Zip code:** 30446

**County:** screven

**Acreage:** 26

**Per Acre Price:** \$2,500.00

**Phone Number:** 912.764.5263(LAND)

**Email:** [info@landanddrivers.com](mailto:info@landanddrivers.com)

**Google Maps link:** [View Larger Map](#)

## Cowart Lane Tract

Published on Plantation Properties & Land Investments, LLC (<https://landanddrivers.com>)

### Aerial



#### PLANTATION PROPERTIES & LAND INVESTMENTS, LLC

1207 Merchants Way, Suite 101 | Statesboro, GA 30458  
\$12.76/ACRE (5263) | 766.726.0698

James Williams  
This document is not a contract. For more information visit  
[www.LandandDrivers.com](http://www.LandandDrivers.com)  
© 2012





## Cowart Lane Tract

Published on Plantation Properties & Land Investments, LLC (<https://landanddrivers.com>)

## Location



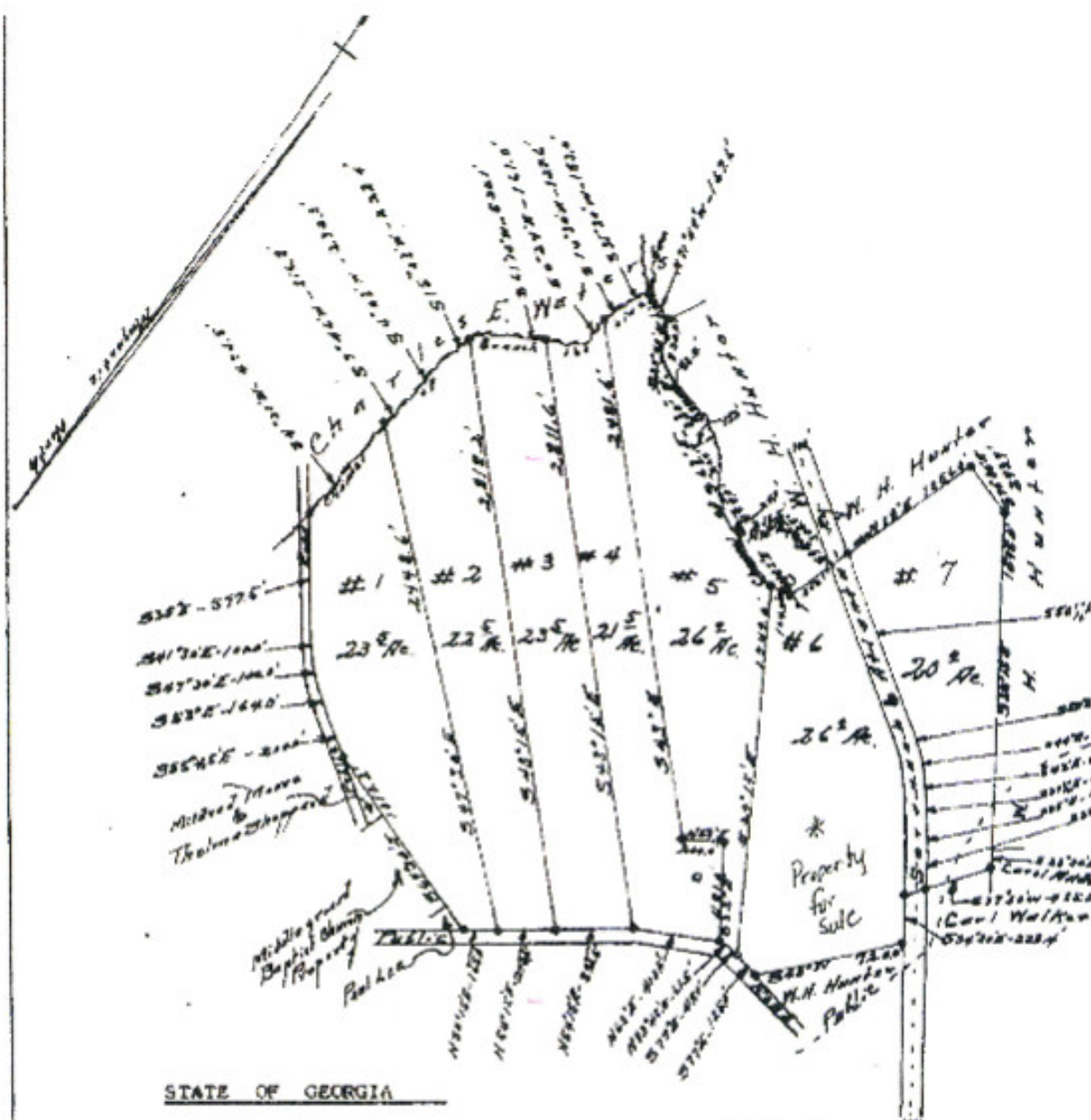
### PLANTATION PROPERTIES & LAND INVESTMENTS, LLC

1207 Merchants Way, Suite 101 | Statesboro, GA 30458  
\$12,764/LAND (5263) | 766.726.5698

Jason Williams  
This document is not a contract. For more information, visit  
[www.LandandDrivers.com](https://www.LandandDrivers.com)  
© 2012



## Plat



STATE OF GEORGIA

SCREVEN COUNTY

PLAT OF

One hundred sixty-three acres of land in 36th G. M. District partly surveyed and compiled from records of former surveys and divided into seven tracts with acreage as shown. Done for Estate W. W. McGee.

Scale 660 Ft. Pr. Inch.

Completed September 1, 1973.

Paul Weitman, County Surveyor  
Effingham County Georgia

Paul Weitman, County Surveyor  
Effingham County Georgia

Certified By Ben N. Fortson, Jr.