

# PLANTATION PROPERTIES & LAND INVESTMENTS, LLC

## Hunter's Retreat

Nice land at a great price! Hunting/Timber/Wildlife Retreat in Screven County. This 84± acre tract has plenty to offer. Located between Guyton and Cooperville off Highway 17 North. Only an hour from Savannah or 20mins from Statesboro, GA. A great multi-use property, perfect for an investment tract. The property is mostly all wooded with planted pines, hardwoods and a small open area. There are roads and trails throughout the property allowing you access all over the tract. This place is also loaded with deer, duck and turkey signs and has excellent habitat for the wildlife. This property would make a great recreational tract to enjoy hunting, trail rides, camping and more. Or build your dream home in the country. A MUST SEE!!! Call Jason Today! 912.764.LAND(5263)



**Price:** \$160,000

**Property Type:** Land

**Status:** Sold

**Street/Address:** 0 Effingham Hwy

**City:** Sylvania

**State:** Georgia

**Zip code:** 30467

**County:** screven

**Acreage:** 84

**Per Acre Price:** \$0.00

**Phone Number:** 912.764.LAND(5263)

**Email:** [info@landanddrivers.com](mailto:info@landanddrivers.com)

**Google Maps link:** [View Larger Map](#)

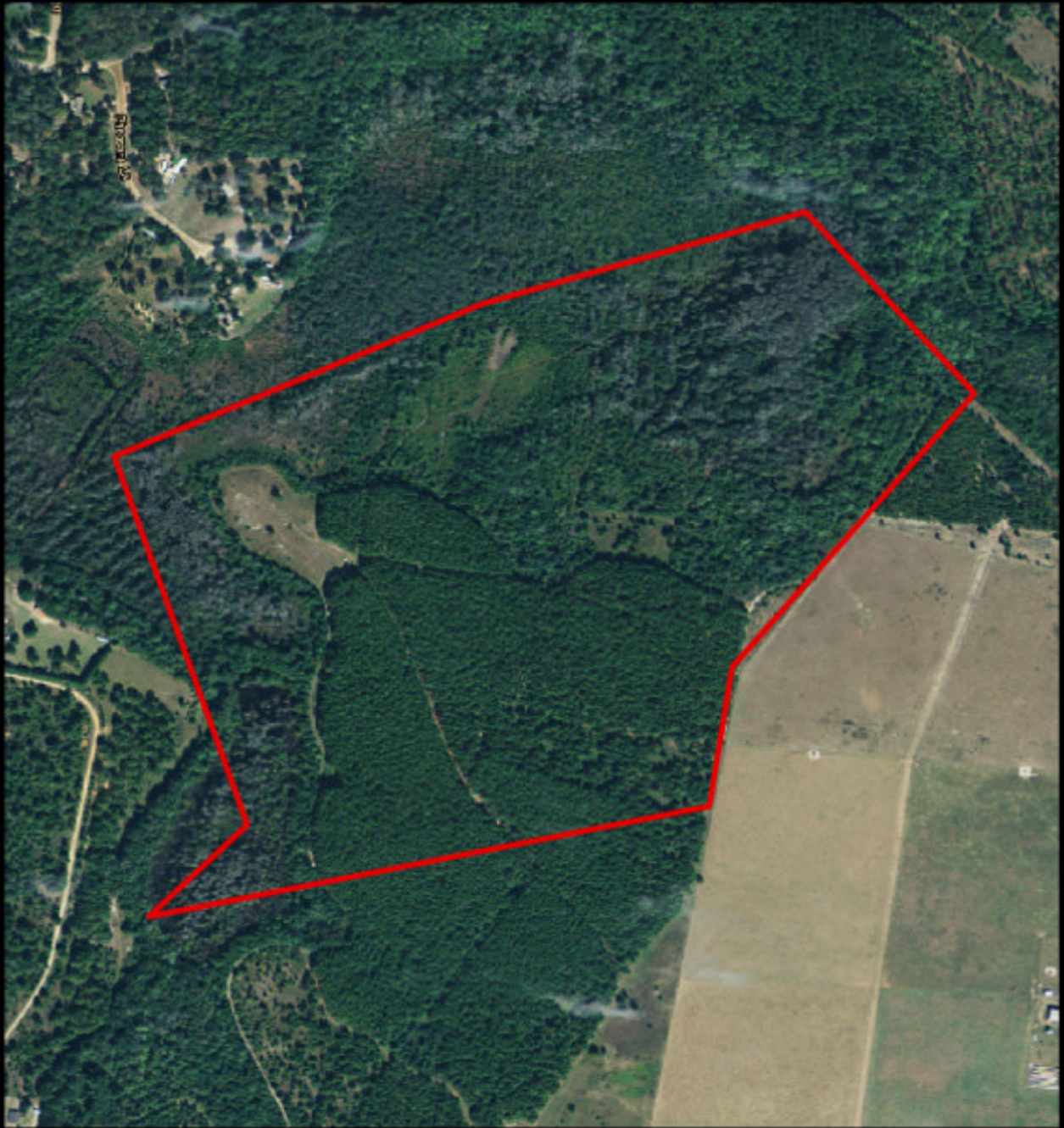
## Hunter's Retreat

Published on Plantation Properties & Land Investments, LLC (<https://landandrivers.com>)

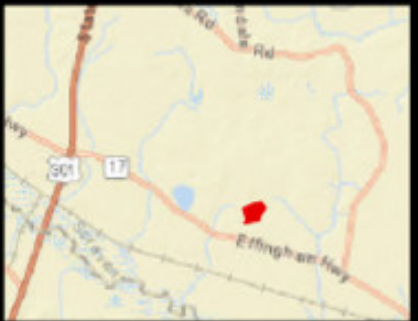
---



## Aerial Map



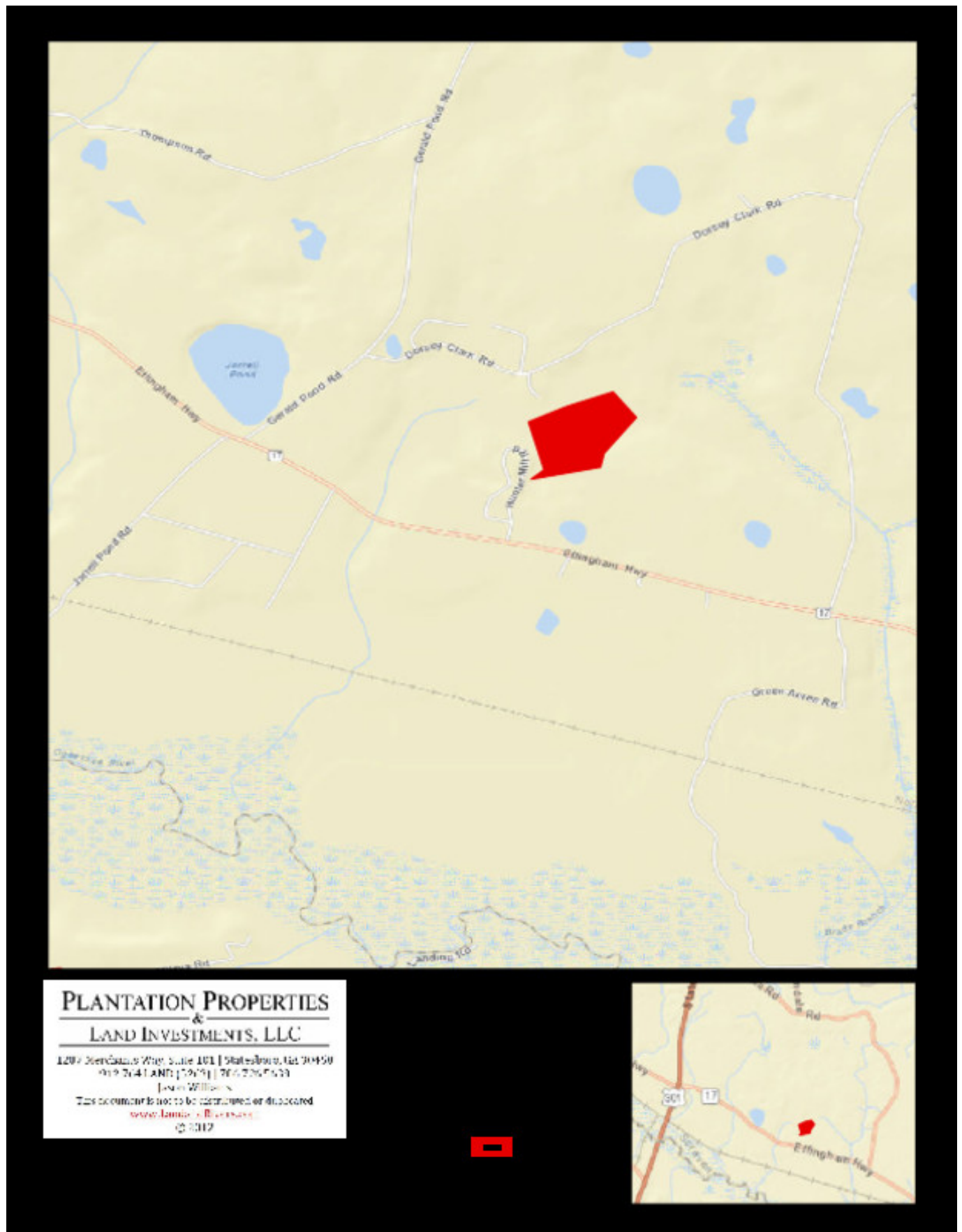
**PLANTATION PROPERTIES  
&  
LAND INVESTMENTS, LLC**  
1207 Merchants Way, Suite 101 | Statesboro, GA 30458  
919.764.1AND | 706.736.7633  
Jason Williams  
This document is not to be reproduced or disseminated  
[www.landandrivers.com](http://www.landandrivers.com)  
© 2017



## Location Map

# Hunter's Retreat

Published on Plantation Properties & Land Investments, LLC (<https://landanddrivers.com>)



Source URL: <https://landanddrivers.com/property/hunters-retreat>