



Rolling Pastures

Rolling Pastures is approximately 413±acs of fenced pasture and wooded land. Conveniently located about 25 miles from Statesboro, Georgia and 60 miles from Savannah, Georgia. The quiet seclusion is just right for those seeking to relax from all the hustle and bustle yet only minutes away from I-16. You can be at the airport in a mere 20 minutes or in downtown Savannah in only 30mins. The property consists widely of pasture land but also has some wooded acreage in the northern section of the property. There is also a metal building with living quarters, two pole sheds, and equipment shed located on the property as well. Septic and well are also in place making it the perfect place to build your new dream home. Perfect for hunting, camping, trail rides and hikes... a true refuge for wildlife such as deer, duck, turkeys and more! You can easily make this place your new home, weekend retreat, venture property...the possibilities are endless. Let us know if you have interest in this fine tract and we will make arrangements to show you the property. 912.764.LAND(5263)



Price: \$785,384
Property Type: Land
Status: Sold
Street/Address: 2910 Griffin Ferry Rd
City: Metter
State: Georgia
Zip code: 30439
County: candler
Acreage: 413
Per Acre Price: \$1,900.00
Phone Number: 912.764.LAND(5263)
Email: info@landandrivers.com
Google Maps link: [View Larger Map](#)

Rolling Pastures

Published on Plantation Properties & Land Investments, LLC (<https://landandrivers.com>)



Rolling Pastures

Published on Plantation Properties & Land Investments, LLC (<https://landanddrivers.com>)

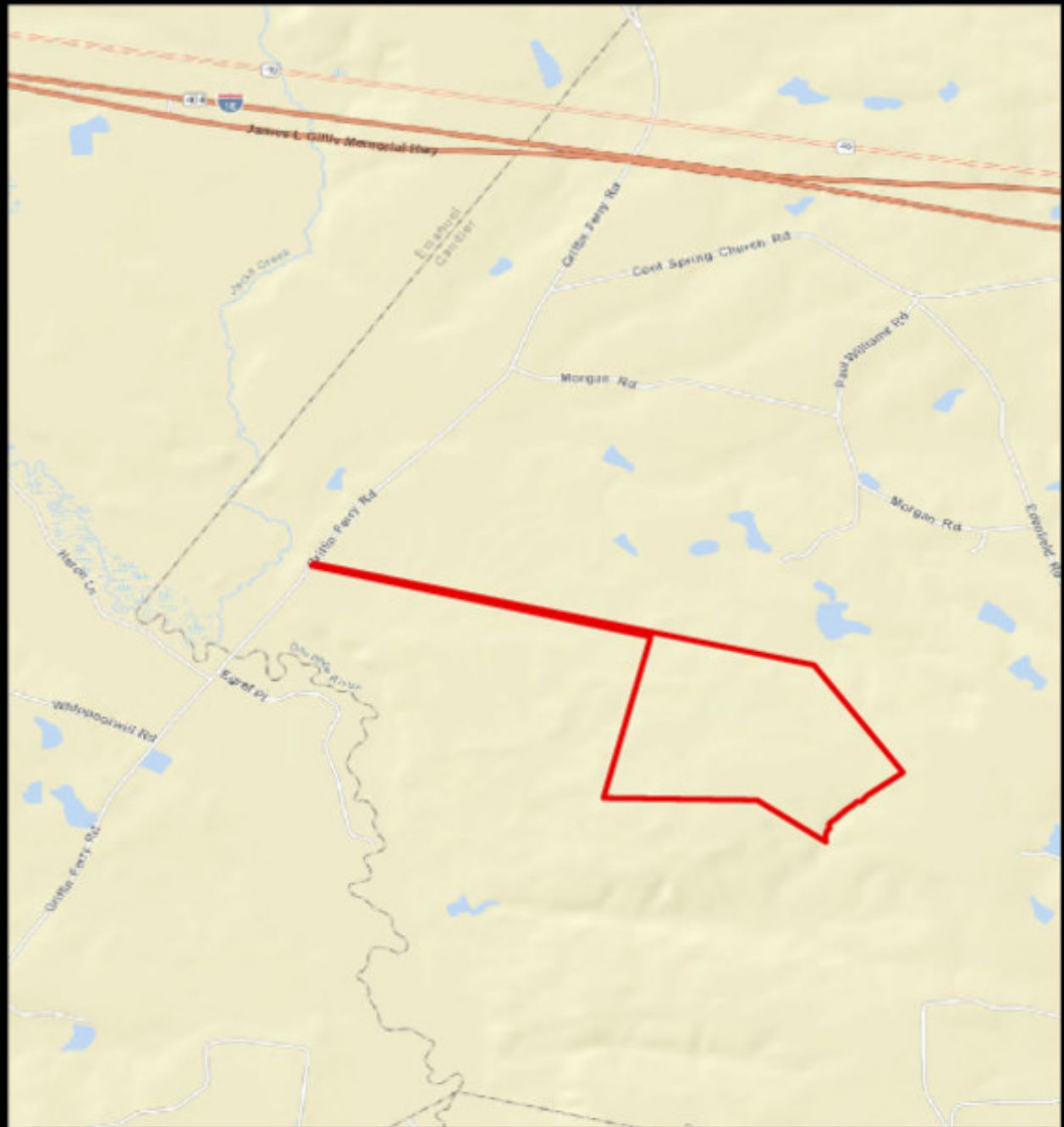


**PLANTATION PROPERTIES
&
LAND INVESTMENTS, LLC**
1207 Stearns Way, Suite 101 | Statesboro, GA 30450
919.764.1AND | 706.726.7633
Jason Williams
This document is not to be construed or duplicated
www.landanddrivers.com
© 2012



Rolling Pastures

Published on Plantation Properties & Land Investments, LLC (<https://landanddrivers.com>)

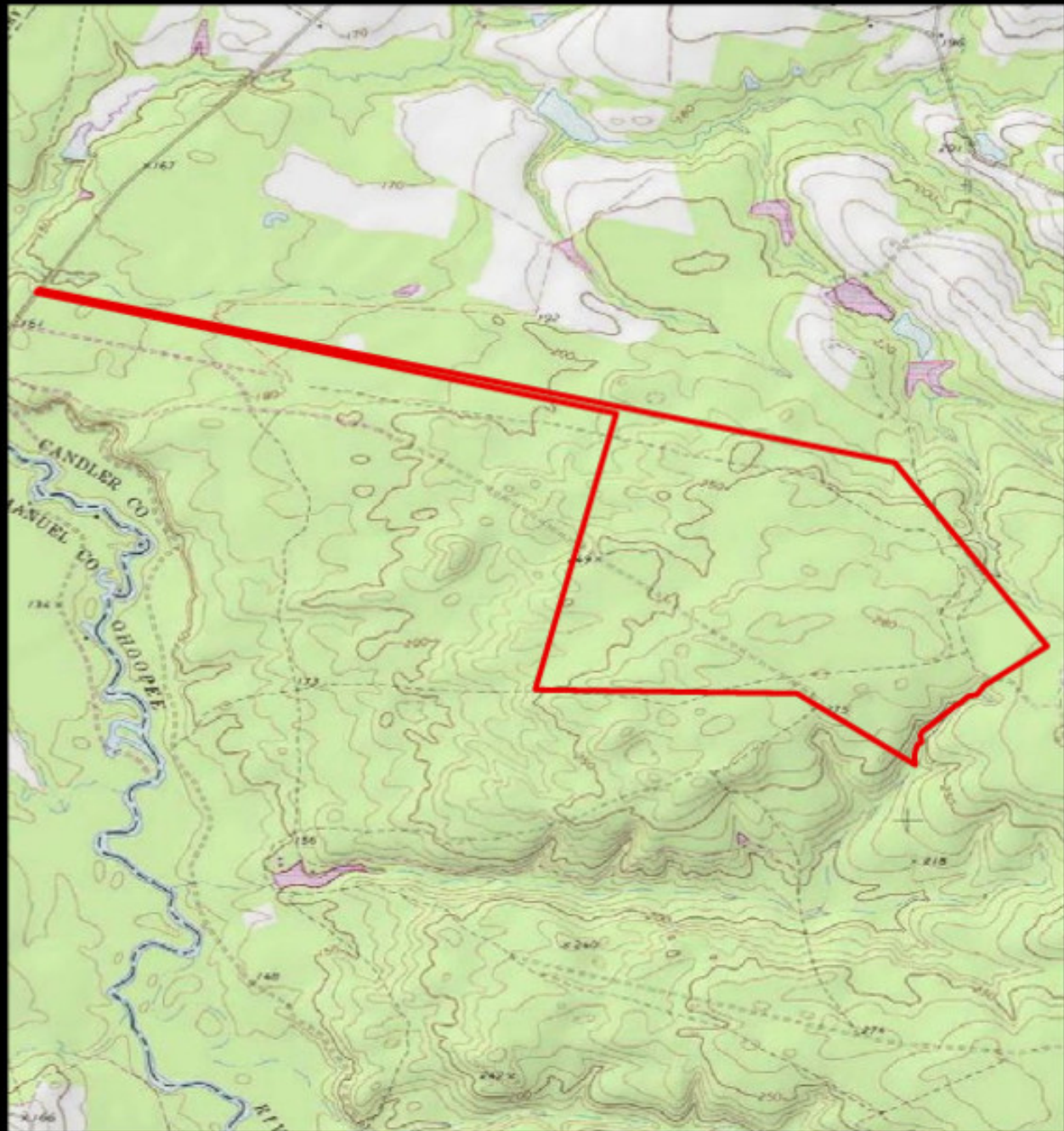


**PLANTATION PROPERTIES
&
LAND INVESTMENTS, LLC**
1207 Merchants Way, Suite 101 | Statesboro, GA 30458
919.764.1AND | (909) 766.7267 x33
Jason Williams
This document is not to be retransmitted or duplicated
www.LandandDrivers.com
© 2012



Rolling Pastures

Published on Plantation Properties & Land Investments, LLC (<https://landanddrivers.com>)



**PLANTATION PROPERTIES
&
LAND INVESTMENTS, LLC**
1207 Merchants Way, Suite 101 | Statesboro, GA 30458
919 764 1480 | 706 726 7433
Lisa Williams
This document is not to be retransmitted or disseminated
www.landandinvestments.com
© 2012



Source URL: <https://landanddrivers.com/property/rolling-pastures>