

PLANTATION PROPERTIES

&

LAND INVESTMENTS, LLC

Ponderosa Pond

Ponderosa Pond is a 121± acre tract located in Jefferson County, GA along Highway 221. This property features a 832 sq. feet cabin with cypress siding that has a family room, kitchen, two bedrooms, one bath, and front and back porches. There is approximately 10±acs of pasture/open land, a 3.5 acre pond, and the rest of the land is in natural pine. There is also a small older house located at the entrance of the property with pecan trees scattered about. With a gated entrance and an excellent road system throughout the property, this would be the perfect place to build your dream home or a great get-a-way place on the weekend. This tract is conveniently located 5 miles southwest of Bartow, GA at 12351 Hwy 221. Enjoy hunting, trail rides, camping, horseback riding, and more all on your own land. Call today for more details or to view this property. **Pictures of inside of cabin are available upon request.



Price: \$250,000

Property Type: Land

Status: Sold

Street/Address: 12351 Hwy 221

City: bartow

State: Georgia

Zip code: 30413

County: jefferson

Acreage: 121

Per Acre Price: \$0.00

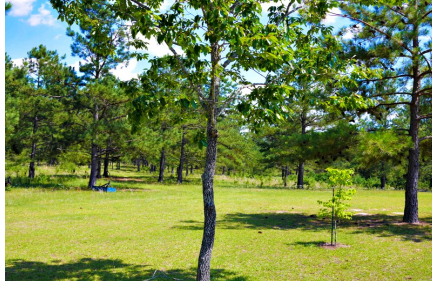
Phone Number: 912.764.LAND(5263)

Email: info@landandrivers.com

Google Maps link: [View Larger Map](#)

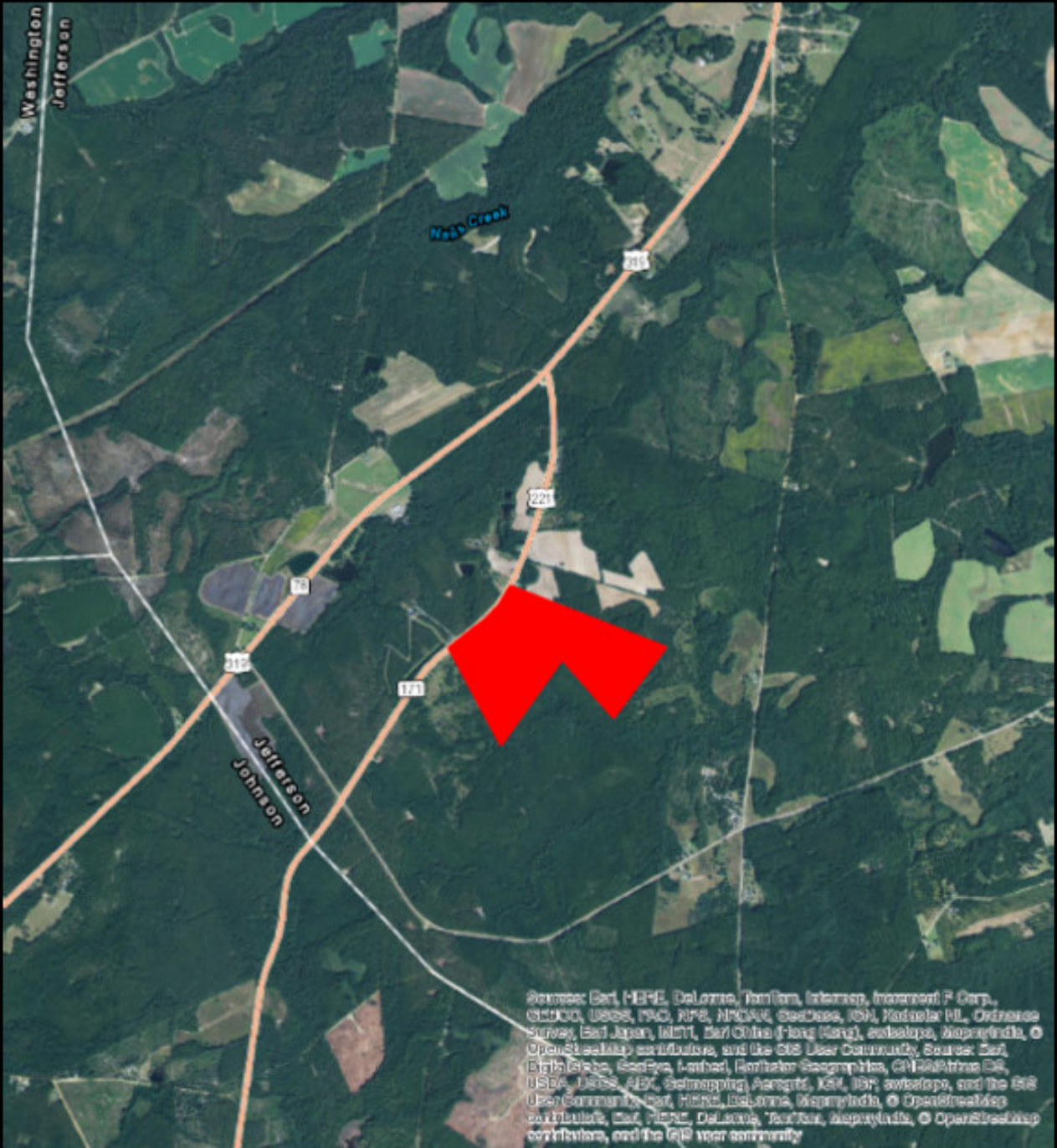
Ponderosa Pond

Published on Plantation Properties & Land Investments, LLC (<https://landandrivers.com>)

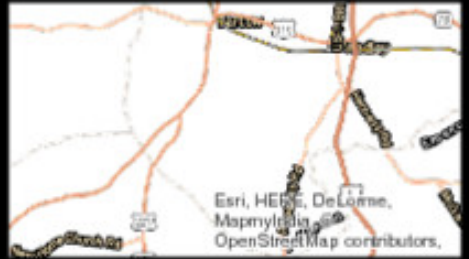


Ponderosa Pond

Published on Plantation Properties & Land Investments, LLC (<https://landandrivers.com>)

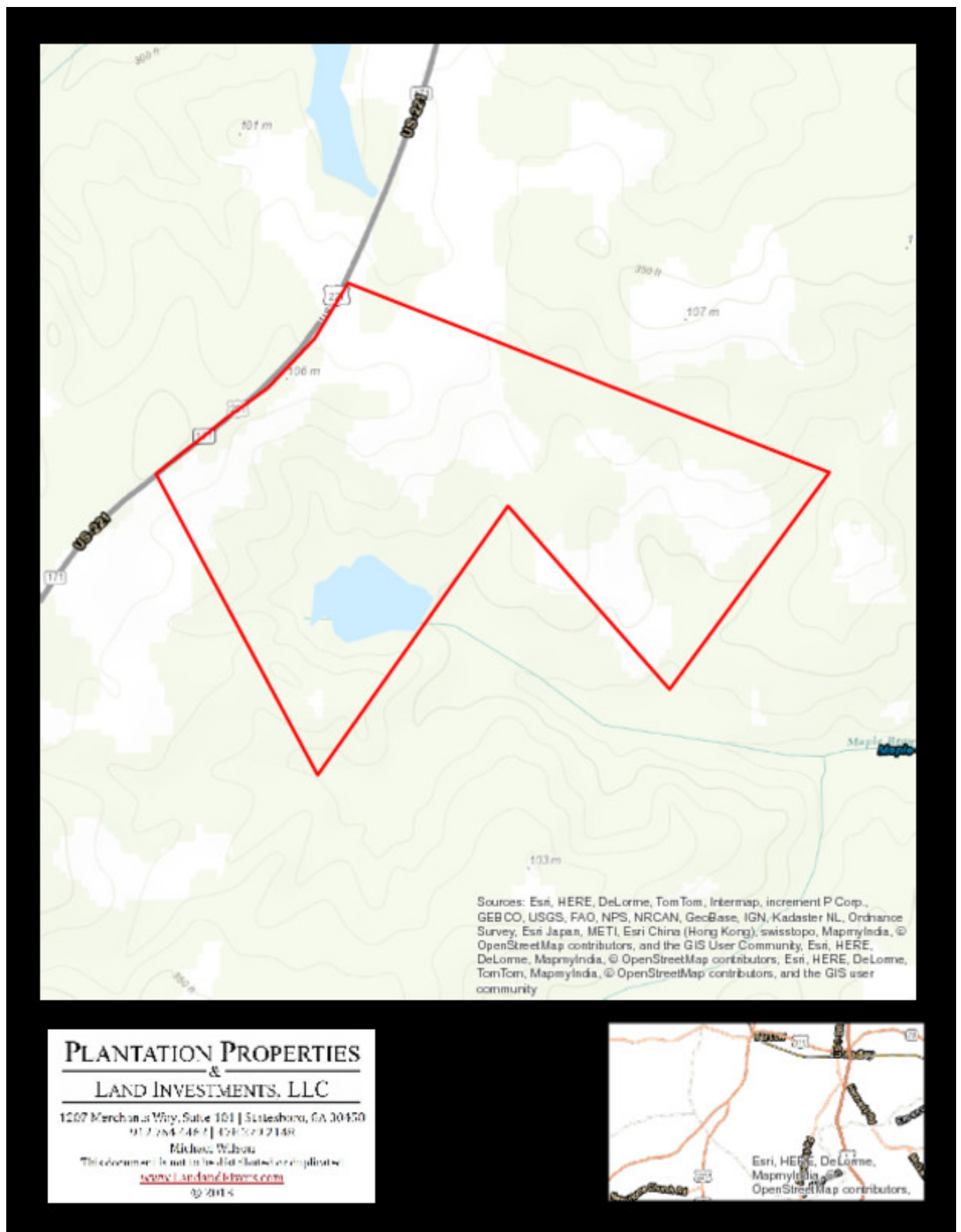


PLANTATION PROPERTIES
&
LAND INVESTMENTS, LLC
1207 Merchants Way, Suite 101 | Statesboro, GA 30450
912.684.7467 | 912.672.2148
Michael Wilson
This advertisement is not an offer of insurance or any other financial product.
www.Landandrivers.com
© 2014



Ponderosa Pond

Published on Plantation Properties & Land Investments, LLC (<https://landanddrivers.com>)



Source URL: <https://landanddrivers.com/property/ponderosa-pond>