



Sunhill Grange

Sunhill Grange is 30 +/- acres in eastern Washington county. The property is largely made up of land that was once in cultivation. There is a small clump of pecan trees along the frontage of Hwy 24. The property has frontage along both Sunhill-Grange Road and Hwy 24. This would make an ideal property for a small farm or home site. The land could easily be converted to pecan grove or vegetable farm.



Price: \$52,325

Property Type: Land

Status: Sold

Street/Address: HWY 24 East

City: Sandersville

State: Georgia

Zip code: 31082

County: washington

Acreage: 30

Per Acre Price: \$1,750.00

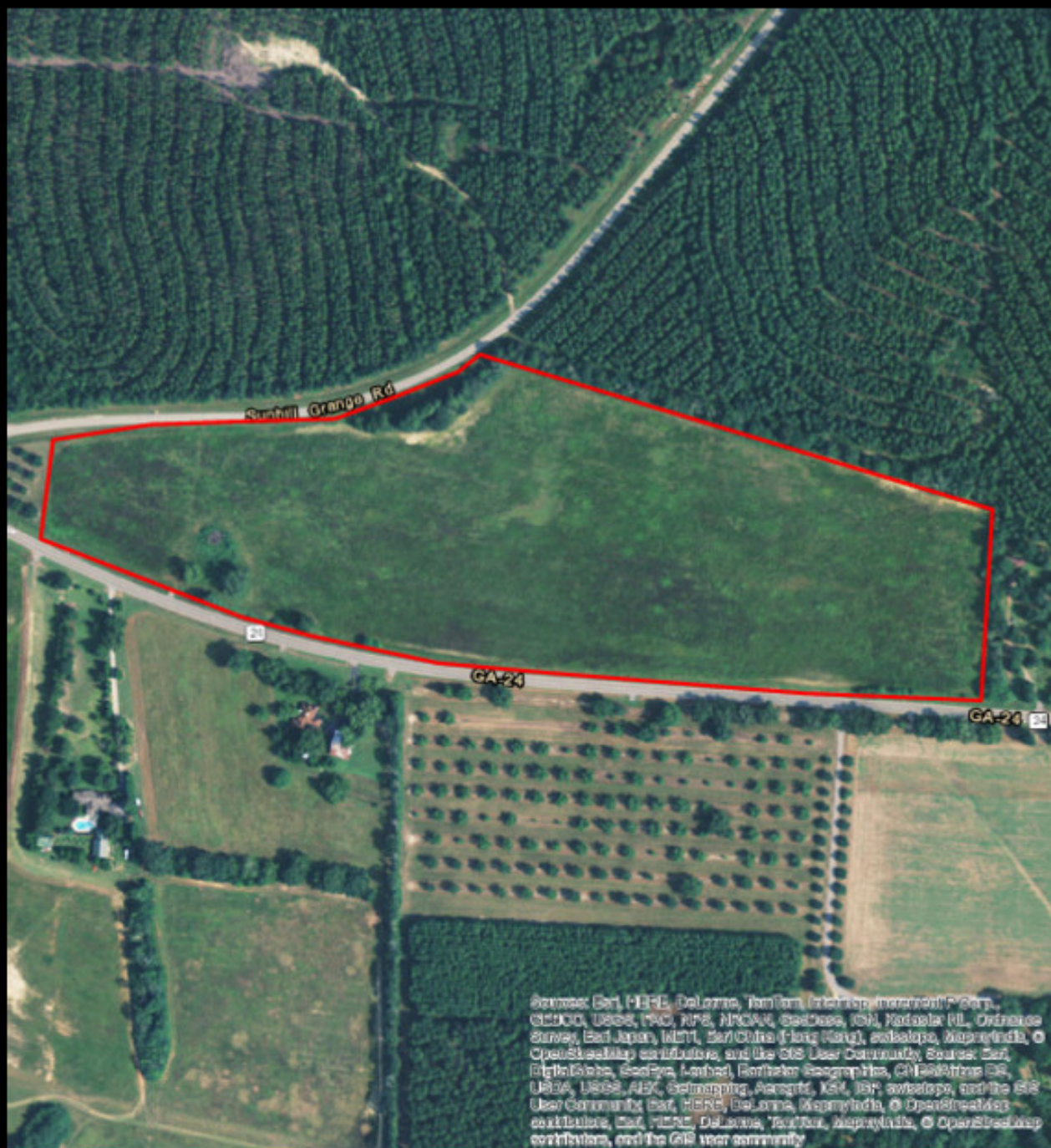
Phone Number: (478) 279-2148

Email: michael@landanddrivers.com

Google Maps link: [View Larger Map](#)

Sunhill Grange

Published on Plantation Properties & Land Investments, LLC (<https://landanddrivers.com>)



Sources: Esri, HERE, DeLorme, TomTom, Intermap, increment P Corp., CNES, USDA, FAO, NPS, NGA, GEBCO, IGN, Nasa, Survey, Esri Japan, METI, Esri China (Hong Kong), Swisstopo, Mapbox India, © OpenStreetMap contributors, and the GIS User Community. Sources: Esri, Esri, HERE, DeLorme, Intermap, increment P Corp., CNES, USDA, FAO, NPS, NGA, GEBCO, IGN, Nasa, Survey, Esri Japan, METI, Esri China (Hong Kong), Swisstopo, Mapbox India, © OpenStreetMap contributors, and the GIS User Community.

PLANTATION PROPERTIES & LAND INVESTMENTS, LLC

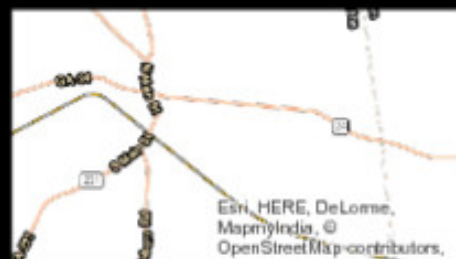
1207 Merchants Way, Suite 101 | Statesboro, GA 30450
912.284.7462 | 478.523.2148

Michael Wilson

This document is not to be distributed or replicated

[www.landanddrivers.com](https://landanddrivers.com)

© 2014



Source URL: <https://landanddrivers.com/property/sunhill-grange>