

## Hwy 25- 45+/-acs

Published on Plantation Properties & Land Investments, LLC (<https://landanddrivers.com>)

---



## Hwy 25- 45+/-acs

45±acs of wooded acreage located along Hwy 25 and Hermans Rd in Millen, GA. With paved road frontage, this property would make for the perfect home site to build your dream home, weekend retreat, or venture property. The possibilities are endless! Enjoy four wheeler riding, camping, and much more all on your own land! Call today for more information or to set up an appointment to view this tract on Hwy 25 with one of our agents. 912.764.5263. Additional acreage can be purchased.



**Price:** \$90,000

**Property Type:** Land

**Status:** Sold

**Street/Address:** Hwy 25 North

**City:** millen

**State:** Georgia

**Zip code:** 30442

**County:** jenkins

**Acreage:** 45

**Per Acre Price:** \$2,000.00

**Phone Number:** 912.764.LAND(5263)

**Email:** [info@landanddrivers.com](mailto:info@landanddrivers.com)

**Google Maps link:** [View Larger Map](#)

## Hwy 25- 45+/-acs

Published on Plantation Properties & Land Investments, LLC (<https://landandrivers.com>)

---



## Hwy 25- 45+/-acs

Published on Plantation Properties & Land Investments, LLC (<https://landanddrivers.com>)



### PLANTATION PROPERTIES & LAND INVESTMENTS, LLC

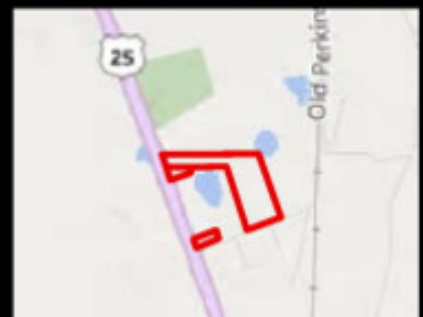
1207 Jernigan's Way, Suite 101 | Statesboro, GA 30450  
919 2641 AND | 707 | 706 226 5633

Jason Williams

This document is not to be reproduced or duplicated

[www.LandandDrivers.com](http://www.LandandDrivers.com)

© 2012



Source URL: <https://landanddrivers.com/property/hwy-25-45-acs>