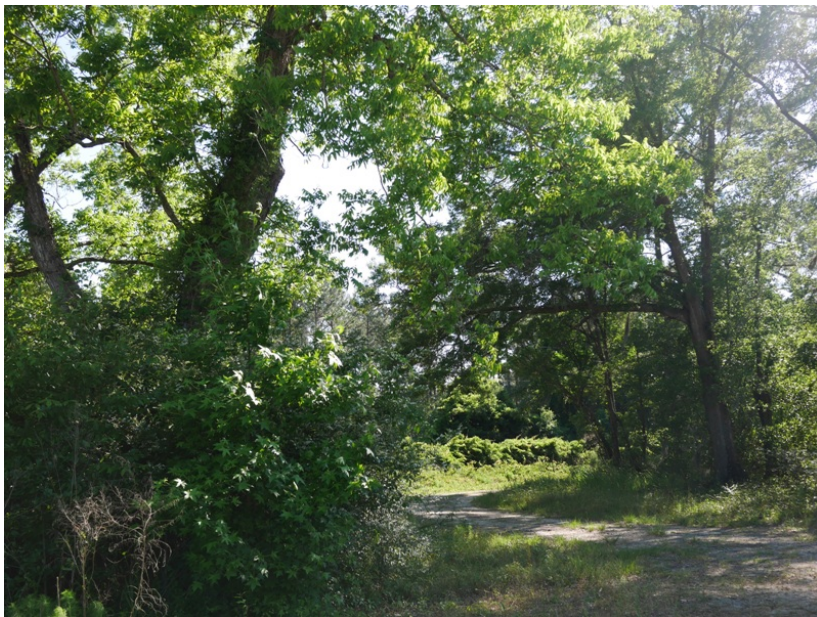




## Woodlands Tract

46+/- acres featuring mostly wooded land with a mix of merchantable and pre-merchantable timber and 4+/- acres of cultivated land along Hwy 46. This tract would make a great home place, weekend "get-a-way", hunting tract or investment opportunity for someone. You can enjoy farming, hunting, trail rides, camping and more all on your own land. Located in the Southeast Bulloch school district near the Bulloch County and Bryan County line only 25 miles from the Savannah/Hilton Head International Airport, 25 minutes to Pooler, and 30 minutes to downtown Savannah, this tract is in a very convenient location! Call today for more details or to view this property. (912)764-5263



**Price:** \$175,256

**Property Type:** Land

**Status:** Sold

**Street/Address:** Hwy 46

**City:** Ellabell

**State:** Georgia

**Zip code:** 31308

**County:** bulloch

**Acreage:** 46

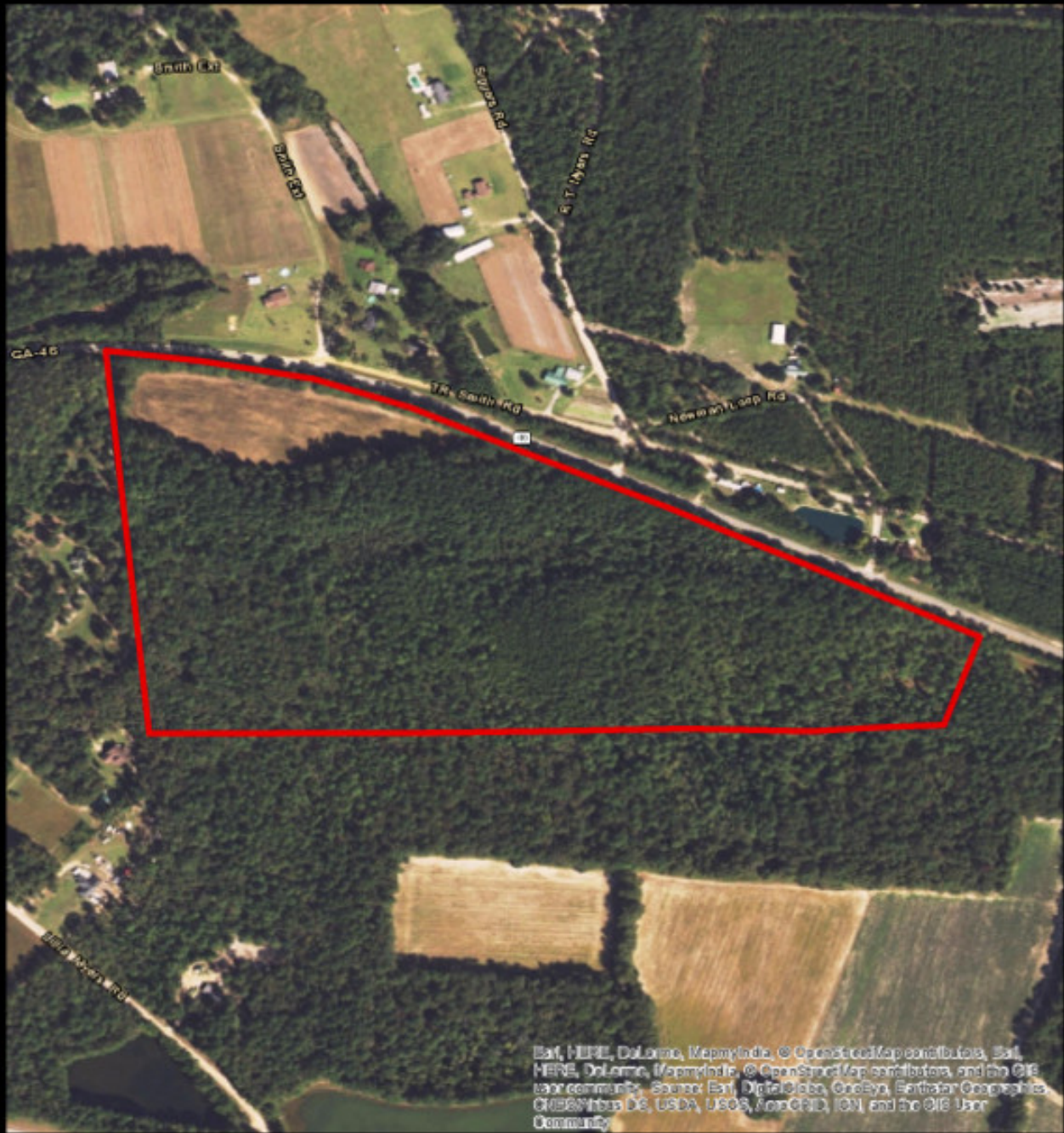
**Per Acre Price:** \$3,800.00

**Phone Number:** 912.764.5263

**Email:** [info@landandrivers.com](mailto:info@landandrivers.com)

**Google Maps link:** [View Larger Map](#)

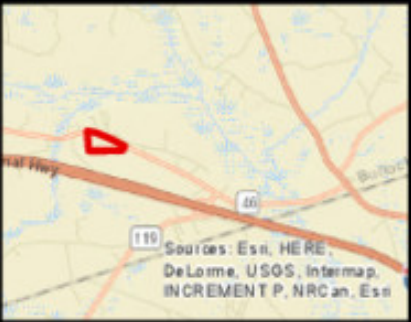
## Aerial Map



Esri, HERE, DeLorme, MapmyIndia, © OpenStreetMap contributors, Swi, HERE, DeLorme, MapmyIndia, © OpenStreetMap contributors, and the GIS User community, Source: Esri, DigitalGlobe, GeoEye, Earthstar Geographics, CNES/Airbus DS, USDA, USGS, AeroGRID, IGN, and the GIS User Community

**PLANTATION PROPERTIES  
&  
LAND INVESTMENTS, LLC**

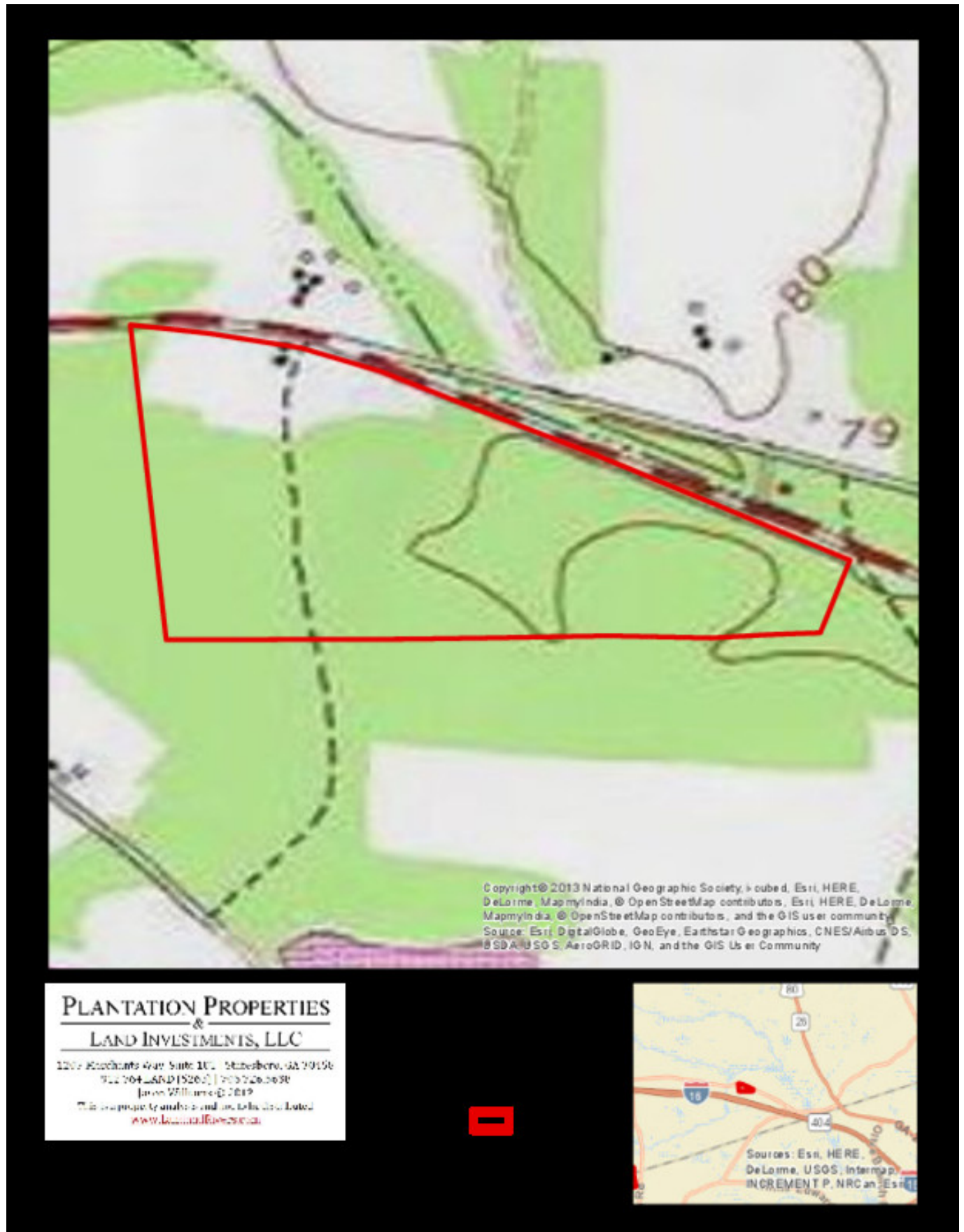
1207 Woodchuck Ave Suite 101 Statesboro, GA 30458  
912 764 4444 (S262) | 703 726 0658  
jason@woodlands.com  
This company and its services are listed at  
[www.landandrivers.com](http://www.landandrivers.com)



# Woodlands Tract

Published on Plantation Properties & Land Investments, LLC (<https://landandrivers.com>)

## Topo Map



Source URL: <https://landandrivers.com/property/woodlands-tract>