

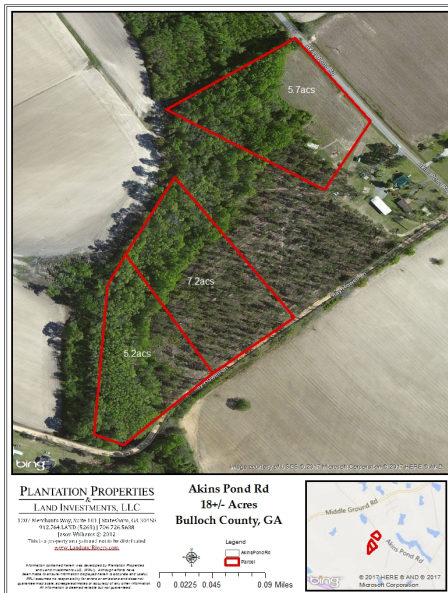
Ray Howell Tract 3

Published on Plantation Properties & Land Investments, LLC (<https://landanddrivers.com>)



Ray Howell Tract 3

This 7+/- acre tract of land features planted pines, dirt road frontage, a nice hardwood border and a creek running along the back of the property. Property is located 7+/- miles from downtown Statesboro, 9+/- miles from Georgia Southern University and approximately 1 hour from Savannah, GA. This would be a great place to build your dream home! Call us today (912)764-5263 *Additional acreage available *No mobile homes



Price: \$49,999

Property Type: Land

Status: Sold

Street/Address: Ray Howell Rd

City: Statesboro

State: Georgia

Zip code: 30458

County: bulloch

Acreage: 7

Per Acre Price: \$0.00

Phone Number: 912.764.5263

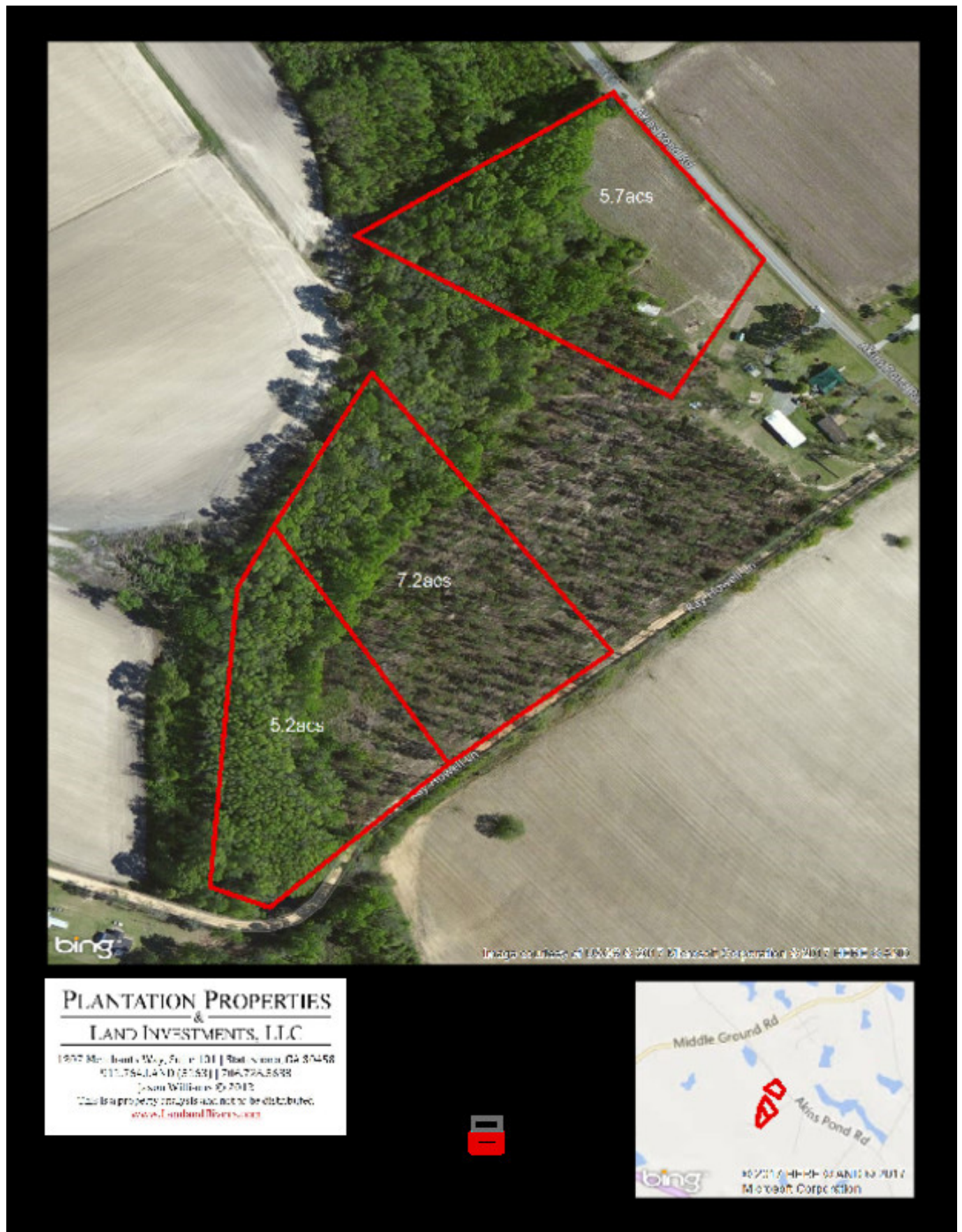
Email: info@landanddrivers.com

Google Maps link: [View Larger Map](#)

Aerial Map

Ray Howell Tract 3

Published on Plantation Properties & Land Investments, LLC (<https://landanddrivers.com>)



Source URL: <https://landanddrivers.com/property/ray-howell-tract-3>