

## Belmont Rd Ogeechee River Tract

Published on Plantation Properties & Land Investments, LLC (<https://landandrivers.com>)

---



### Belmont Rd Ogeechee River Tract

This property is loaded with things to do to enjoy the outdoors. Containing 645± acres of rolling terrain and 7,100 feet of river frontage. Multiple roads throughout the tract make it easily accessible. Deer, duck, turkey and hog hunting are all plentiful on the property. The majority of the timber was cut in 2015. However, 160 acres of pine and hardwood merchantable timber remain. Only a few minutes from Louisville and Sandersville, this could be your new weekend retreat.



**Price:** \$918,400

**Property Type:** Land

**Status:** Sold

**Street/Address:**

**City:** Louisville

**State:** Georgia

**Zip code:** 30434

**County:** jefferson

**Acreage:** 645

**Per Acre Price:** \$1,422.00

**Phone Number:** 912.978.0890

**Email:** [jforehand@landandrivers.com](mailto:jforehand@landandrivers.com)

**Google Maps link:** [View Larger Map](#)

# Belmont Rd Ogeechee River Tract

Published on Plantation Properties & Land Investments, LLC (<https://landandrivers.com>)

---

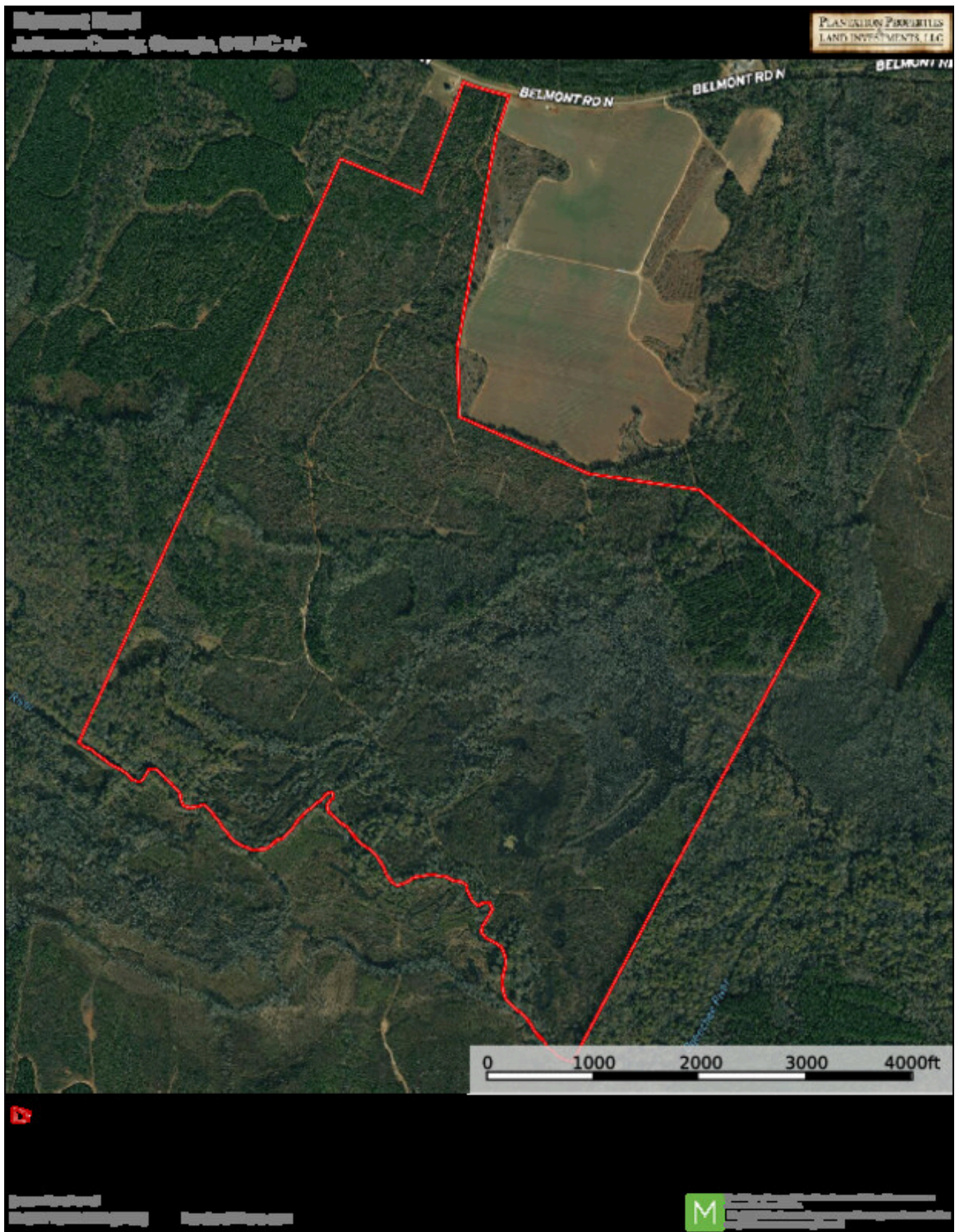


## Aerial Map



# Belmont Rd Ogeechee River Tract

Published on Plantation Properties & Land Investments, LLC (<https://landandrivers.com>)



Source URL: <https://landandrivers.com/property/belmont-rd-ogeechee-river-tract>