

Willow Pond Farm

Published on Plantation Properties & Land Investments, LLC (<https://landandrivers.com>)



Willow Pond Farm

Willow Pond Farm is 37+/- acres located in eastern Laurens County. This farm is the perfect place for horses or a small cattle operation. The gated drives leaves the paved road and makes its way between two of the properties three ponds. The drive is gravel and lined with white, vinyl fencing. Along the drive are the two barns on the property. The larger barn is 120x40 and has been converted into an equipment storage area. This barn contains a half bath with its own septic tank. The smaller barn is being used for horse stables. The stall fronts are there and operational. Located between the two barns is a large holding paddock that opens out into a 16 +/- acre pasture that is perimeter fenced. A round pen and walker pen are located immediately in front of the barns. There are three ponds on the property. The largest is just under five acres, while the smaller two make up just under 1.5 acres. Surrounding the larger pond is 7+/- acres of additional pasture. The home is approximately 2,800 square feet and was built in 2003. It has two bedrooms up stairs, as well as a bathroom. Downstairs, the kitchen opens into the large living room that is open to the upstairs. The living room also affords a great view of the larger pond and the live oaks that bound the driveway. Also, located down stairs is a large master suite. It contains an office, bathroom, bedroom, as well as a sunroom with a jacuzzi in the floor. All of the kitchen appliances, washer and dryer, as well as many pieces of furniture are included in the sale of the property.



Price: \$310,000

Property Type: Land

Status: Sold

Street/Address: 1316 Ralph Keen Road

City: Dublin

State: Georgia

Zip code: 31027

County: laurens

Willow Pond Farm

Published on Plantation Properties & Land Investments, LLC (<https://landanddrivers.com>)

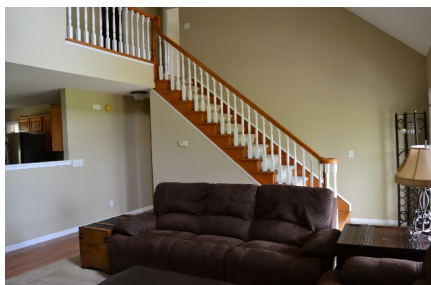
Acreage: 37

Per Acre Price: \$0.00

Phone Number: (478) 279-2148

Email: michael@landanddrivers.com

Google Maps link: [View Larger Map](#)



Willow Pond Farm

Published on Plantation Properties & Land Investments, LLC (<https://landandrivers.com>)



Aerial map

Willow Pond Farm

Published on Plantation Properties & Land Investments, LLC (<https://landanddrivers.com>)

Ralph Keen
Laurens County, Georgia, 37.66 AC +/-

PLANTATION PROPERTIES
LAND INVESTMENTS, LLC

Google Data ©2018 Google Imagery ©2018, DigitalGlobe, US

Boundary

michael wilson
P: (478) 279-2148 michael@landanddrivers.com 1207 Merchants Way Suite 101 Statesboro, GA

The information contained herein was obtained from sources deemed to be reliable. MapRight Services makes no warranties or guarantees as to the completeness or accuracy thereof.

Detailed Aerial map

Willow Pond Farm

Published on Plantation Properties & Land Investments, LLC (<https://landanddrivers.com>)

Ralph Keen
Laurens County, Georgia, 37.66 AC +/-

PLANTATION PROPERTIES
LAND INVESTMENTS, LLC

Google
Map data ©2018 Google

Man House Barn Pond / Tank Boundary

michael wilson
P: (478) 279-2148 michael@landanddrivers.com 1207 Merchants Way Suite 101 Statesboro, GA 30458

The information displayed herein was obtained from sources deemed to be reliable. AllRight Site does not make any warranty or guarantee, as to the completeness or accuracy thereof.

Source URL: <https://landanddrivers.com/property/willow-pond-farm>