



Historic Southern Mansion

This beautiful historic 1887 southern plantation has been carefully restored to preserve the character of its past and updated to provide all of the comforts of modern amenities.

The residence and attached guesthouse include 5 bedrooms, 5.5 baths, 9 fireplaces and 5,781 square feet. The modern kitchen, breakfast room, large dining room, living room, parlor, den, sun room, exercise room and large office provide ample, comfortable space for family and guests. The grounds include a sundial fountain garden, in-ground swimming pool, pond, gazebo, barn and pasture. The home is also available furnished. It is move-in ready! If you require more land and additional living quarters, the guesthouse office area can be converted to 2 additional guest suites with baths and an additional 44 acres and a partially restored historic farmhouse are also available.

Located in quiet, rural Oliver, Georgia, the property is just 15 miles from Statesboro, Georgia, and Georgia Southern University, 35 miles from the Savannah / Hilton Head International Airport, and 1 mile from the Ogeechee River / Oliver Wildlife Management Area. The location is 10 miles from the Screven County Plantation Airport with two 5,000 paved and lighted runways which can accommodate private jet aircraft. The property is partially bordered by the Ogeechee Creek and is bounded by approximately 1,500 acres of woodland.

This property is ideal as a full-time residence, weekend country home, bed & breakfast, corporate meeting center, upscale hunting lodge, educational facility or retreat...the possibilities are endless! Contact Franklin Stulb at (706) 833-4387 for your private showing.

For more pictures and information, visit www.southernmansion.weebly.com

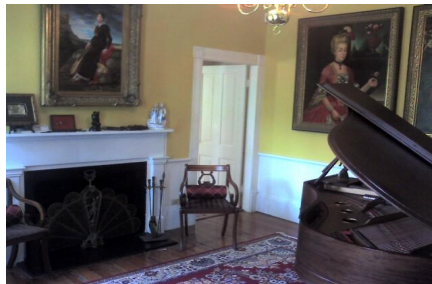
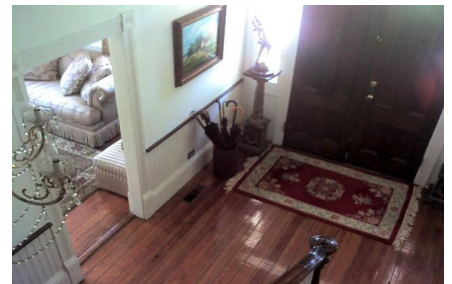
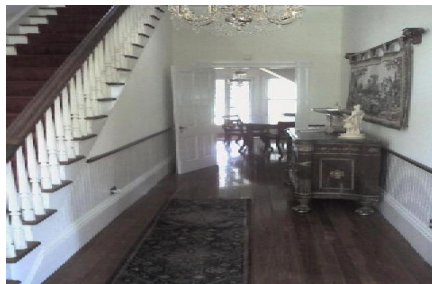


Price: \$495,000

Historic Southern Mansion

Published on Plantation Properties & Land Investments, LLC (<https://landandrivers.com>)

Property Type: Land
Status: Sold
Street/Address: Old Louisville Road
City: Oliver
State: Georgia
Zip code: 30449
County: screven
Acreage: 6
Per Acre Price: \$0.00
Phone Number:
Email:
Google Maps link: [View Larger Map](#)



Historic Southern Mansion

Published on Plantation Properties & Land Investments, LLC (<https://landandrivers.com>)



Source URL: <https://landandrivers.com/property/historic-southern-mansion>