

Westside Farm Tract 5

Published on Plantation Properties & Land Investments, LLC (<https://landandrivers.com>)



Westside Farm Tract 5

Westside Farm Tract 5 is 75+/- acres with paved road frontage on Metter Rd. in Bulloch County. This tract features some natural hardwoods and 46+/- acres is cultivated. It would be the perfect recreational retreat, hunting property or investment opportunity. See map for additional tracts also available. Enjoy hunting, farming, and more on your own property! Call Jason Williams today to see this property! 912.764.LAND(5263)



Price: \$337,500

Property Type: Land

Status: Sold

Street/Address: Metter Rd.

City: Statesboro

State: Georgia

Zip code: 30458

County: bulloch

Acreage: 75

Per Acre Price: \$4,500.00

Phone Number:

Email:

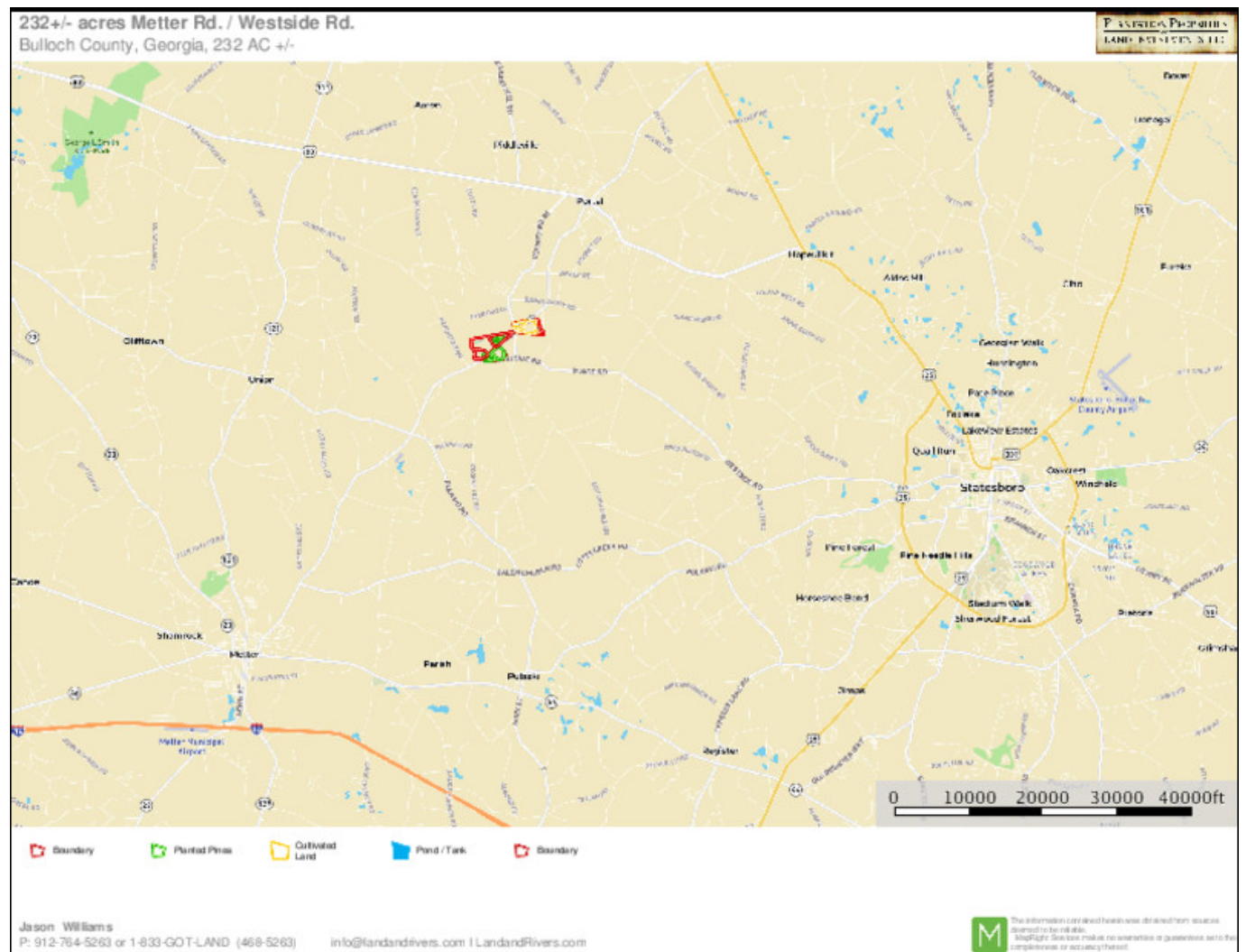
Google Maps link: [View Larger Map](#)

Westside Farm Tract 5

Published on Plantation Properties & Land Investments, LLC (<https://landandrivers.com>)



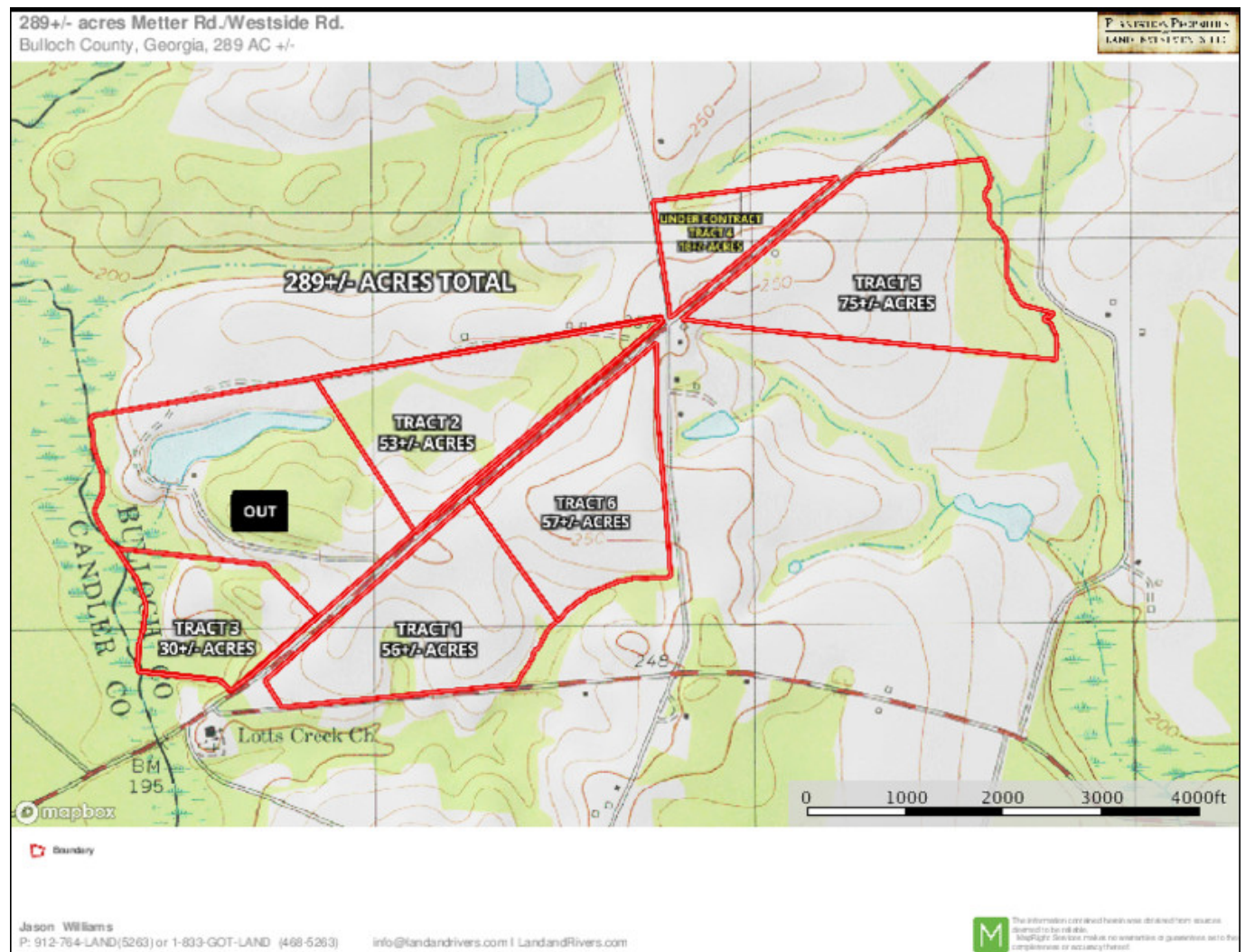
Location map



TOPO

Westside Farm Tract 5

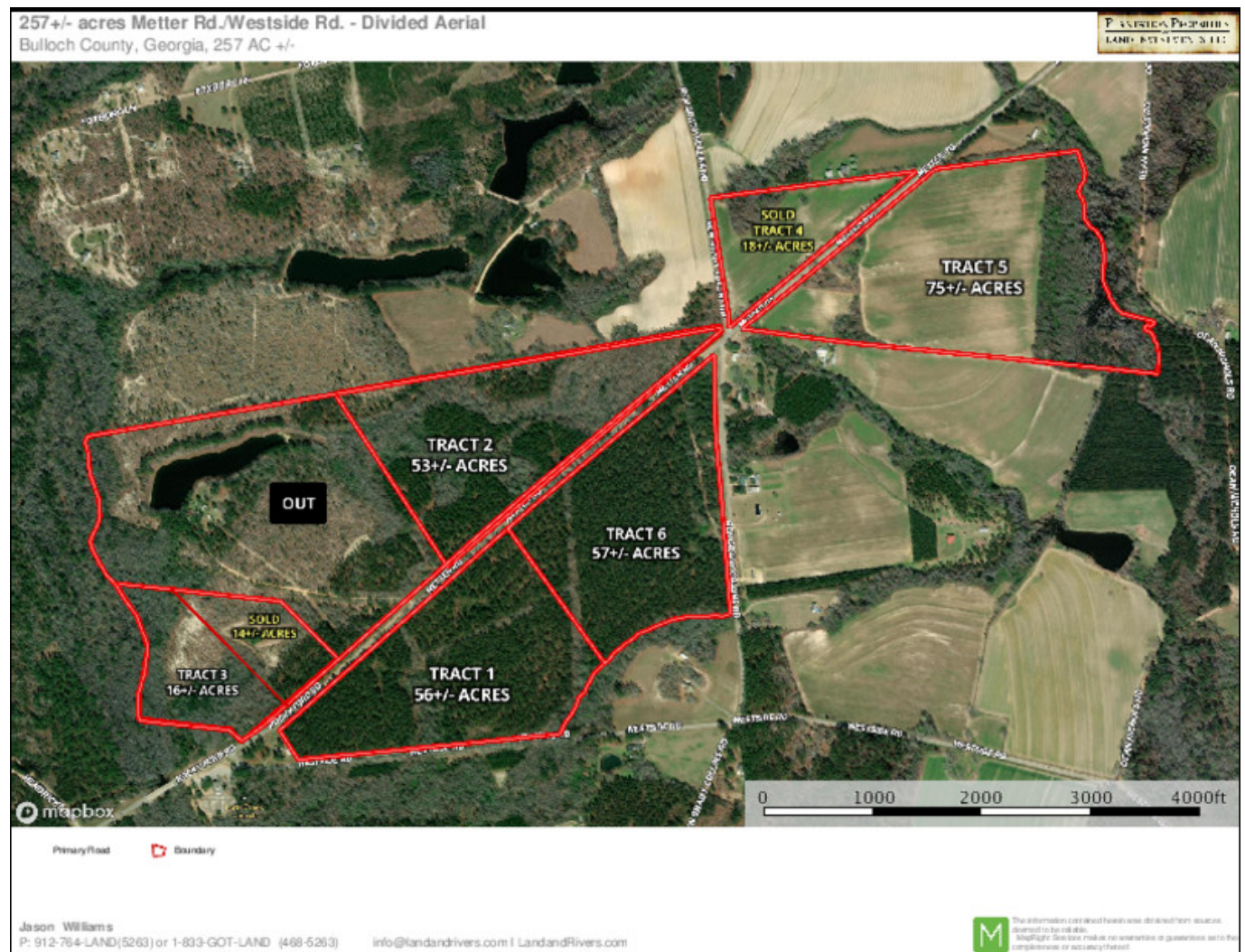
Published on Plantation Properties & Land Investments, LLC (<https://landandrivers.com>)



Aerial Map (Tracts 1-6)

Westside Farm Tract 5

Published on Plantation Properties & Land Investments, LLC (<https://landandrivers.com>)



Source URL: <https://landandrivers.com/property/westside-farm-tract-5>