



Wadley Coleman

This Beautiful 506+/- acre tract on the pristine Ogeechee River is a must see. Located in Northern Emanuel County, GA on the Burke County line, this property is well suited for anyone who enjoys hunting and fishing. Loaded with wildlife and with nearly 800ft of Ogeechee River Frontage this tract is perfect for the investor or sportsman who is looking to invest in a waterfront and timberland property. Conveniently located about 4 miles from the town of Midville and approximately 1 hour south of Augusta, GA. Call Jason today for more details or the see this property. 912.764.LAND(5263)

*Additional 45+/- acres is located across the road and can be bought with this tract for a total of 551+/- acres. See Wadley Coleman Tract - 2



Price: \$708,400

Property Type: Land

Status: Sold

Street/Address: wadley coleman lake

City: Swainsboro

State: Georgia

Zip code: 30401

County: emanuel

Acreage: 506

Per Acre Price: \$1,400.00

Phone Number: 912.764.LAND(5263)

Email: jasonwilliams@landanddrivers.com

Google Maps link: [View Larger Map](#)



Aerial

Published on Plantation Properties & Land Investments, LLC (<https://landandrivers.com>)



**PLANTATION PROPERTIES
&
LAND INVESTMENTS, LLC**

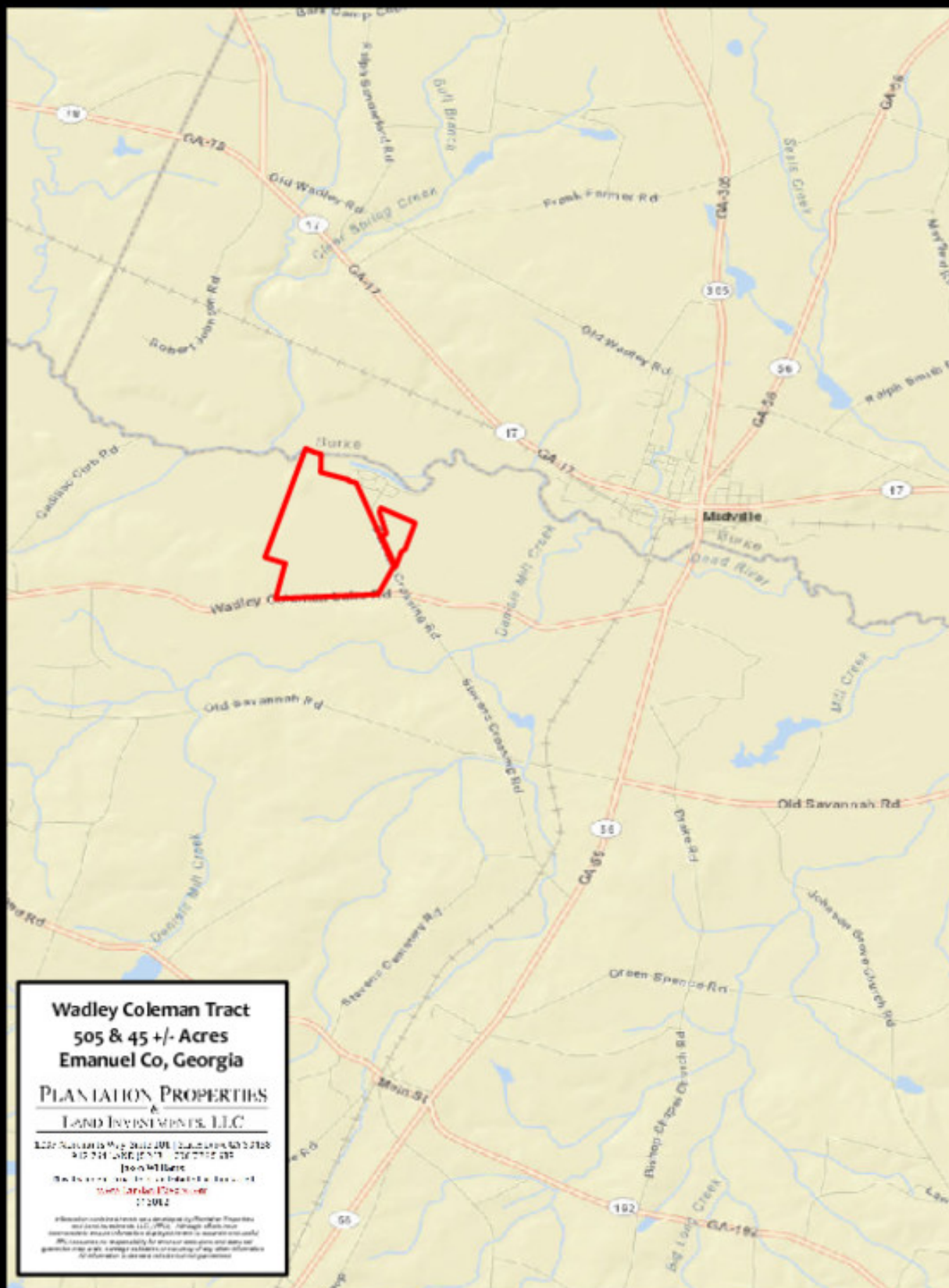
1207 Merchants Way, Suite 101 | Statesboro, GA 30588
912.764.1410 (toll free) | 912.764.5000

John Williams

This document is not to be distributed or reused.
[www.LandAndRivers.com](https://landandrivers.com)
© 2012



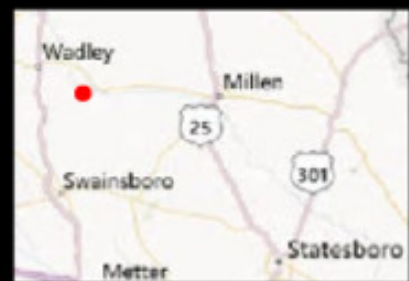
Location



Timber Stand Acreage Map



**PLANTATION PROPERTIES
&
LAND INVESTMENTS, LLC**
1200 Westland Way, Suite 101 | New Port Spgs, FL 33088
904.764.1410 | 904.723.6666
Tanya Williams
The dominant use of the land is for agriculture.
www.landandrivers.com
© 2012



Aerial w/ add. 45acres



**PLANTATION PROPERTIES
&
LAND INVESTMENTS, LLC**

12662 Merriamata Way, Suite 101 | Statesboro, GA 30418
912.761.6810 (toll free) | 912.761.6888
www.PlantationProperties.com
© 2017



Source URL: <https://landanddrivers.com/property/wadley-coleman>