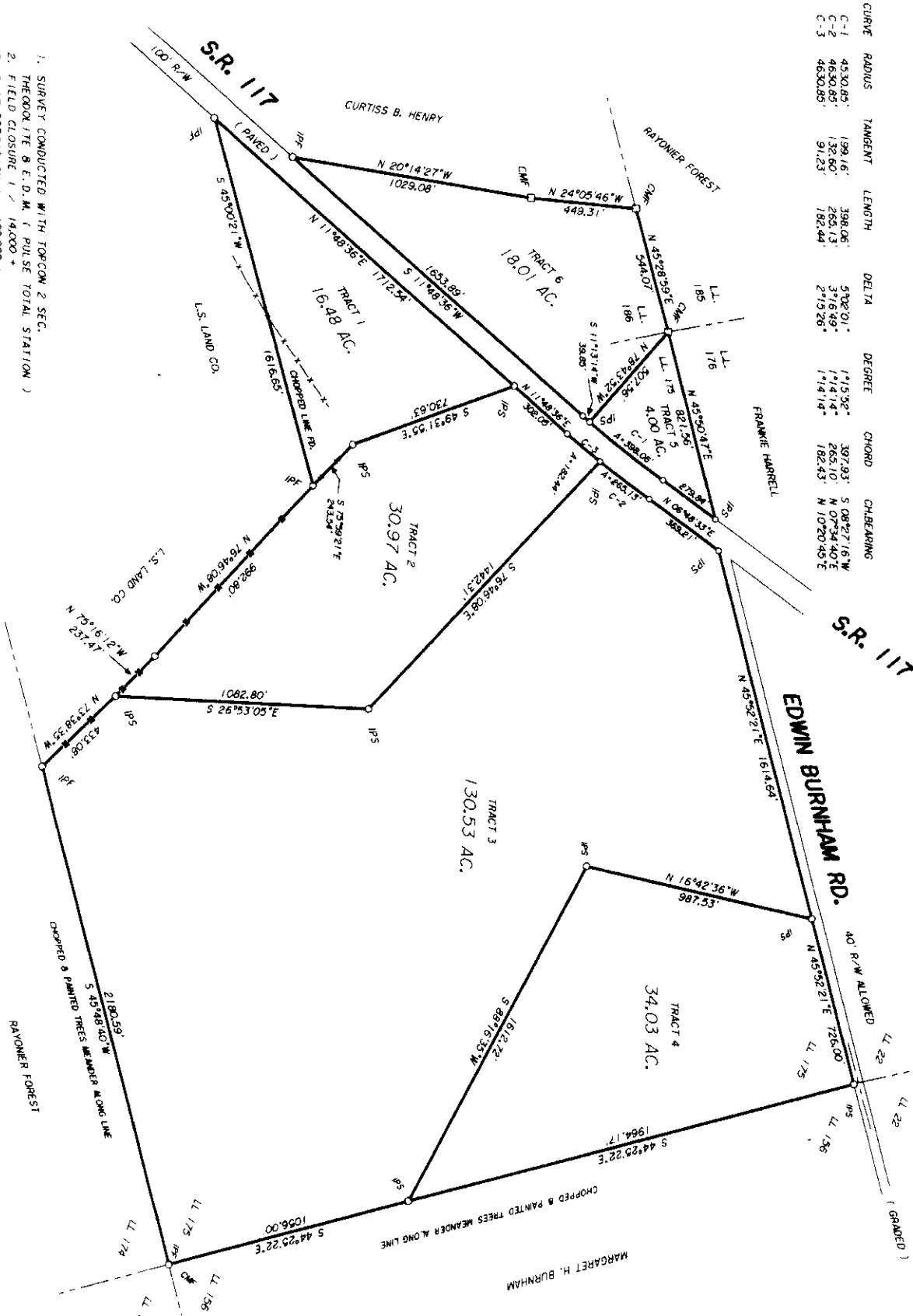


CURVE	RADIUS	TANGENT	LENGTH	DELTA	DEGREE	CHORD	CHANGING
C-1	4330.85'	199.16'	198.06'	57°01'	1°15'32"	397.93'	S 08°27'16"W
C-2	4630.85'	132.60'	265.13'	37°54'49"	1°14'14"	265.10'	N 07°54'40"E
C-3	4630.85'	91.23'	182.44'	27°15'26"	1°14'14"	182.43'	N 10°20'40"E



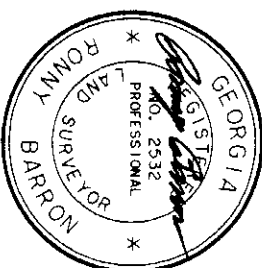
LEGEND:  
 IP5 - IRON PIN SET  
 IP6 - IRON PIN FOUND  
 C.M.F. - CONC. MARKER FD.  
 LL - LAND LOT

1. SURVEY CONDUCTED WITH TOPCON 2 SEC. THEODOLITE & E.D.M. (PULSE TOTAL STATION)
2. FIELD CLOSURE 1 / 14,000 +
3. PLAT PRECISION 1 / 100,000 +
4. PLAT DRAWN WITH C & G SOFTWARE
5. PROPERTY IS SUBJECT TO R/W OF RECORD OR PRECEPTIVE EASEMENT.
6. RONNY BARRON, THE LAND SURVEYOR WHOSE SEAL IS AFFIXED ON THIS PLAT DOES NOT GUARANTEE THAT ALL EASEMENTS WHICH MIGHT AFFECT THIS PROPERTY ARE SHOWN.

GEORGIA, DODGE COUNTY  
 CLERK'S OFFICE SUPERIOR COURT  
 Filed for record 11 day  
 of April 2006 11:55 AM and  
 recorded in Book 35 Page 186  
April 11, 2006  
 Clerk

I certify that in my opinion the provision in O.C.G.A. section 15-06-67 (d) does not require the approval of this plat by the PLANNING COMMISSION.

In my opinion, this plat is a correct representation of the land plotted and has been prepared in conformity with the minimum standards and requirements of law.



**SOUTHERN SURVEYING ASSOCIATES**  
 P.O. BOX 2455  
 401 N PETERSON DOUGLAS GA. PH (912) 384-1144  
 RONNY BARRON  
 HOME PH 833-2340  
 FREDDIE HATTAWAY  
 HOME PH 385-5948

**MARY HORTON ESTATE**

FILE: MHESI  
 SCALE: 1" = 500'  
 DATE: 3-09-2006

PART OF LAND LOTS 186, & 175, 14TH LAND DISTRICT  
 DODGE COUNTY, GEORGIA