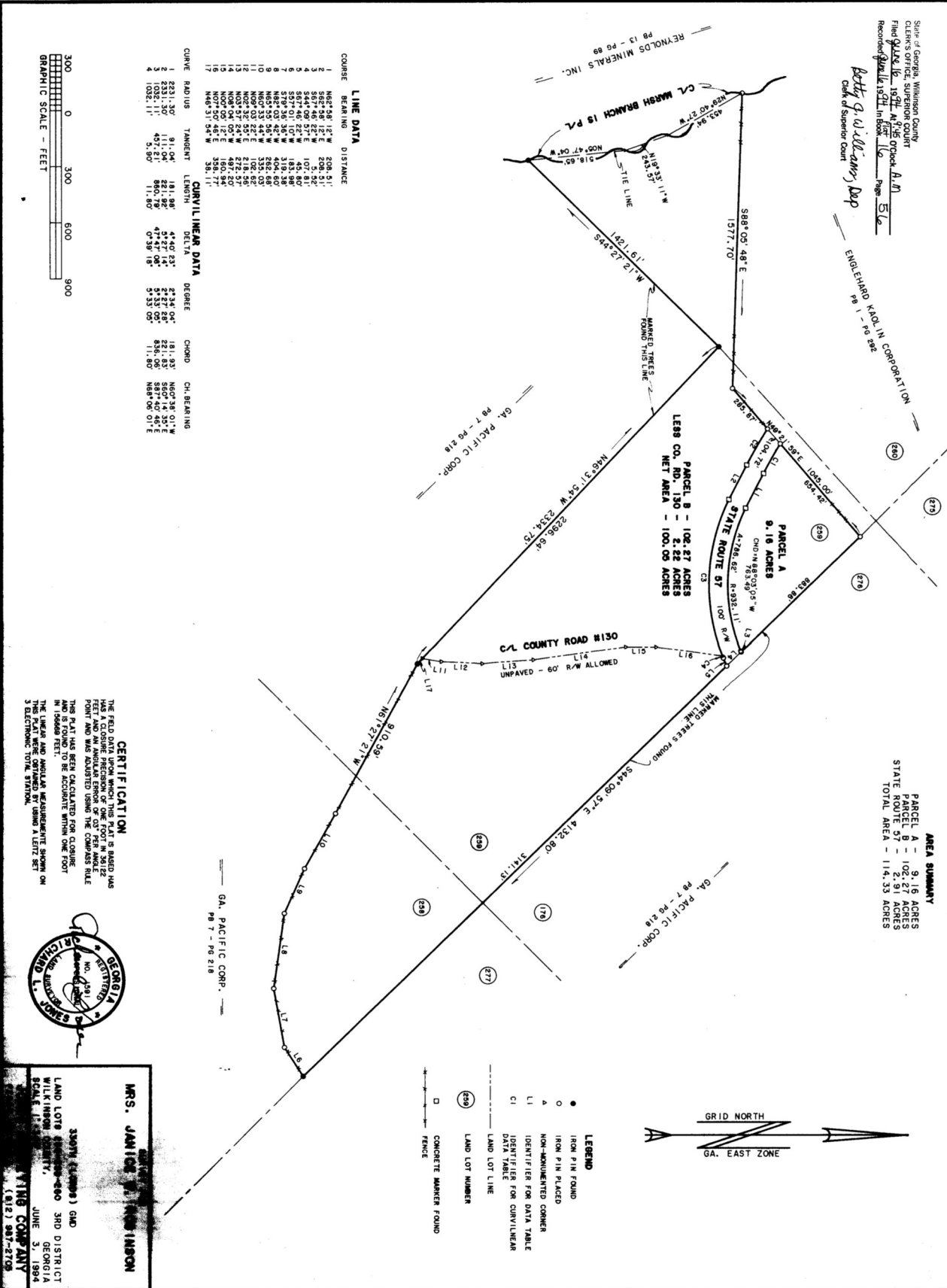


State of Georgia, Wilkinson County
 CLERK'S OFFICE, SUPERIOR COURT
 Filed June 16, 1974 A.M. Page 516
 Recorder Janice L. Ineson
Acty G. W. Williams, Dep.
 Clerk of Superior Court

ENGLAND KOLN CORPORATION
 PG 1 - PG 282

AREA SUMMARY
 PARCEL A - 9.16 ACRES
 PARCEL B - 102.27 ACRES
 STATE ROUTE 57 - 2.91 ACRES
 TOTAL AREA - 114.33 ACRES



LINE DATA

COURSE	BEARING	DISTANCE
1	N82° 58' 12" W	208.51'
2	S82° 48' 22" E	202.52'
3	S44° 08' 57" E	107.81'
4	S57° 01' 17" W	183.88'
5	S78° 30' 38" W	310.48'
6	N49° 53' 54" W	282.48'
7	N69° 33' 24" E	332.03'
8	N02° 32' 55" E	218.35'
9	N08° 04' 02" W	487.20'
10	N49° 31' 54" W	38.11'
11	N02° 32' 55" E	218.35'
12	N08° 04' 02" W	487.20'
13	N49° 31' 54" W	38.11'
14	N02° 32' 55" E	218.35'
15	N08° 04' 02" W	487.20'
16	N49° 31' 54" W	38.11'
17	N02° 32' 55" E	218.35'
18	N08° 04' 02" W	487.20'
19	N49° 31' 54" W	38.11'

CURVILINEAR DATA

CURVE RADIUS	TANGENT	LENGTH	DELTA	DEGREE	CHORD	CH. BEARING
1	2231.30'	91.04'	181.88'	4° 40' 23"	181.33'	N69° 38' 01" W
2	2231.30'	141.04'	221.22'	2° 57' 04"	221.53'	S80° 44' 57" E
3	2231.30'	141.04'	221.22'	4° 52' 04"	221.53'	S80° 44' 57" E
4	1023.11'	5.80'	11.80'	0° 39' 18"	11.80'	N88° 08' 01" E

CERTIFICATION
 THE FIELD DATA UPON WHICH THIS PLAT IS BASED HAS BEEN CHECKED AND FOUND TO BE CORRECT AND ACCURATE TO THE NEAREST TENTH OF AN INCH. THE CURVILINEAR DATA HAS BEEN CHECKED AND FOUND TO BE CORRECT AND ACCURATE TO THE NEAREST TENTH OF AN INCH. THIS PLAT HAS BEEN CALCULATED FOR CURVILINEAR DATA AND WAS ADJUSTED USING THE COMPOUND RULE IN 100000 FEET.
 THE BEARING AND ANGLE MEASUREMENTS SHOWN ON THIS PLAT WERE OBTAINED BY MEANS OF A LEITZ SET 3 ELECTRONIC TOTAL STATION.



MRS. JANICE L. INESON
 SURVEYOR
 STATE OF GEORGIA
 NO. 139
 LAND LOTS 8, 9 AND 10, 3RD DISTRICT
 WILKINSON COUNTY, GEORGIA
 JUNE 5, 1974
THE COMPANY
 1012 587-2705