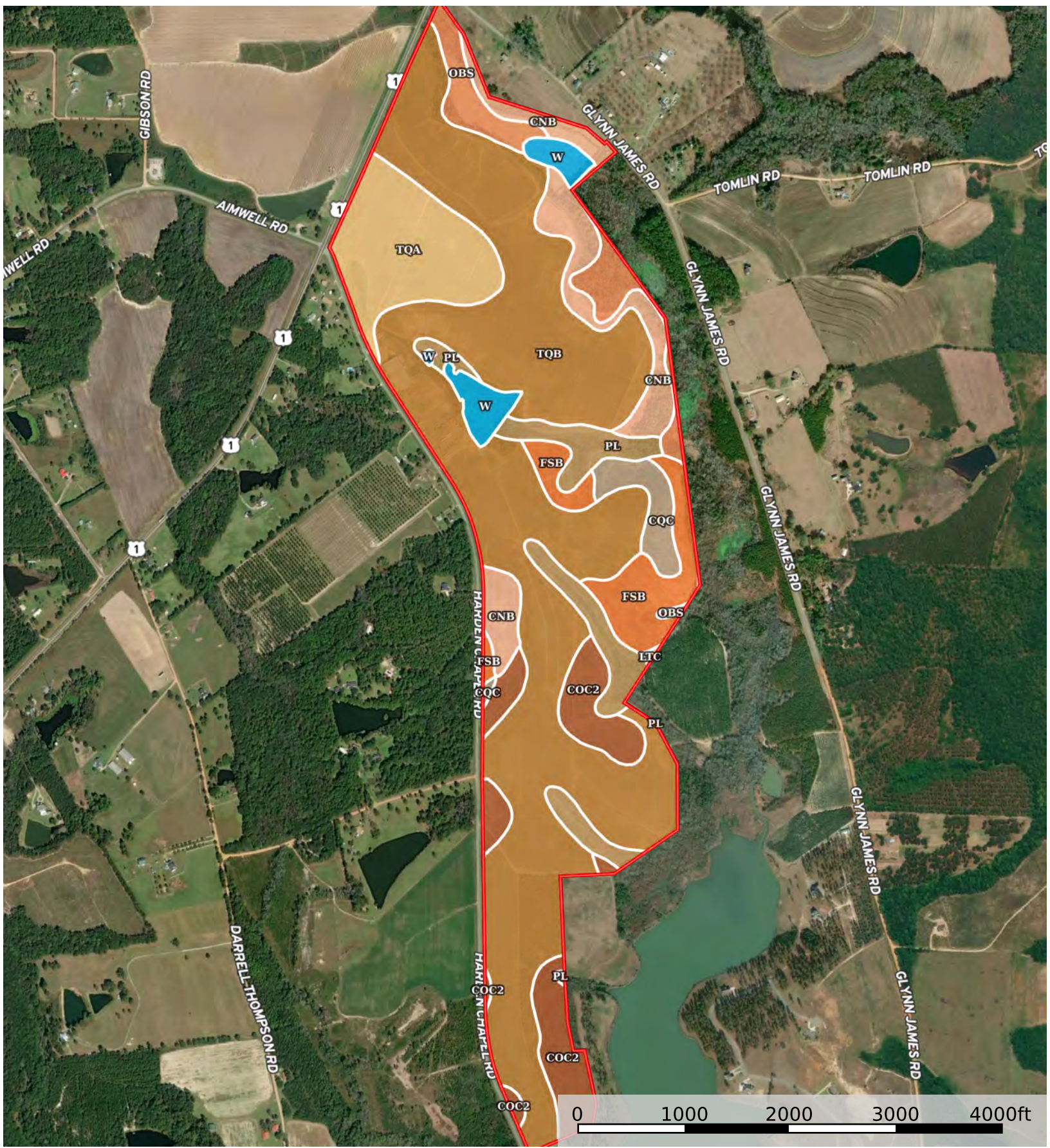


205+/- acs US Hwy 1 & Hardens Chapel Rd.

Toombs County, Georgia, AC +/-



Boundary

|  Boundary 411.13 ac

SOIL CODE	SOIL DESCRIPTION	ACRES	%	CPI	NCCPI	CAP
TqB	Tifton loamy sand, 2 to 5 percent slopes	223.87	54.45	0	65	2e
TqA	Tifton loamy sand, 0 to 2 percent slopes	37.02	9.0	0	66	1
CoC2	Carnegie sandy loam, 5 to 8 percent slopes, moderately eroded	32.48	7.9	0	55	4e
CnB	Carnegie loamy sand, 2 to 5 percent slopes	29.6	7.2	0	52	2e
PI	Pelham loamy sand	26.27	6.39	0	44	5w
FsB	Fuquay loamy sand, 0 to 5 percent slopes	23.23	5.65	0	42	2s
Obs	Osier and Bibb soils, 0 to 2 percent slopes, frequently flooded	18.81	4.58	0	22	5w
W	Water	9.84	2.39	0	-	-
CqC	Cowarts loamy sand, 5 to 8 percent slopes	9.7	2.36	0	44	3e
LTC	Lakeland and Troup soils, 0 to 8 percent slopes	0.31	0.08	0	24	4s
TOTALS		411.13(*)	100%	-	56.67	2.43









(*) Total acres may differ in the second decimal compared to the sum of each acreage soil. This is due to a round error because we only show the acres of each soil with two decimal.

Capability Legend

Increased Limitations and Hazards

Decreased Adaptability and Freedom of Choice Users

Land, Capability

								
	1	2	3	4	5	6	7	8
'Wild Life'	•	•	•	•	•	•	•	•
Forestry	•	•	•	•	•	•	•	
Limited	•	•	•	•	•	•	•	
Moderate	•	•	•	•	•	•		
Intense	•	•	•	•	•			
Limited	•	•	•	•				
Moderate	•	•	•					
Intense	•	•						
Very Intense	•							

Grazing Cultivation

(c) climatic limitations (e) susceptibility to erosion

(s) soil limitations within the rooting zone (w) excess of water