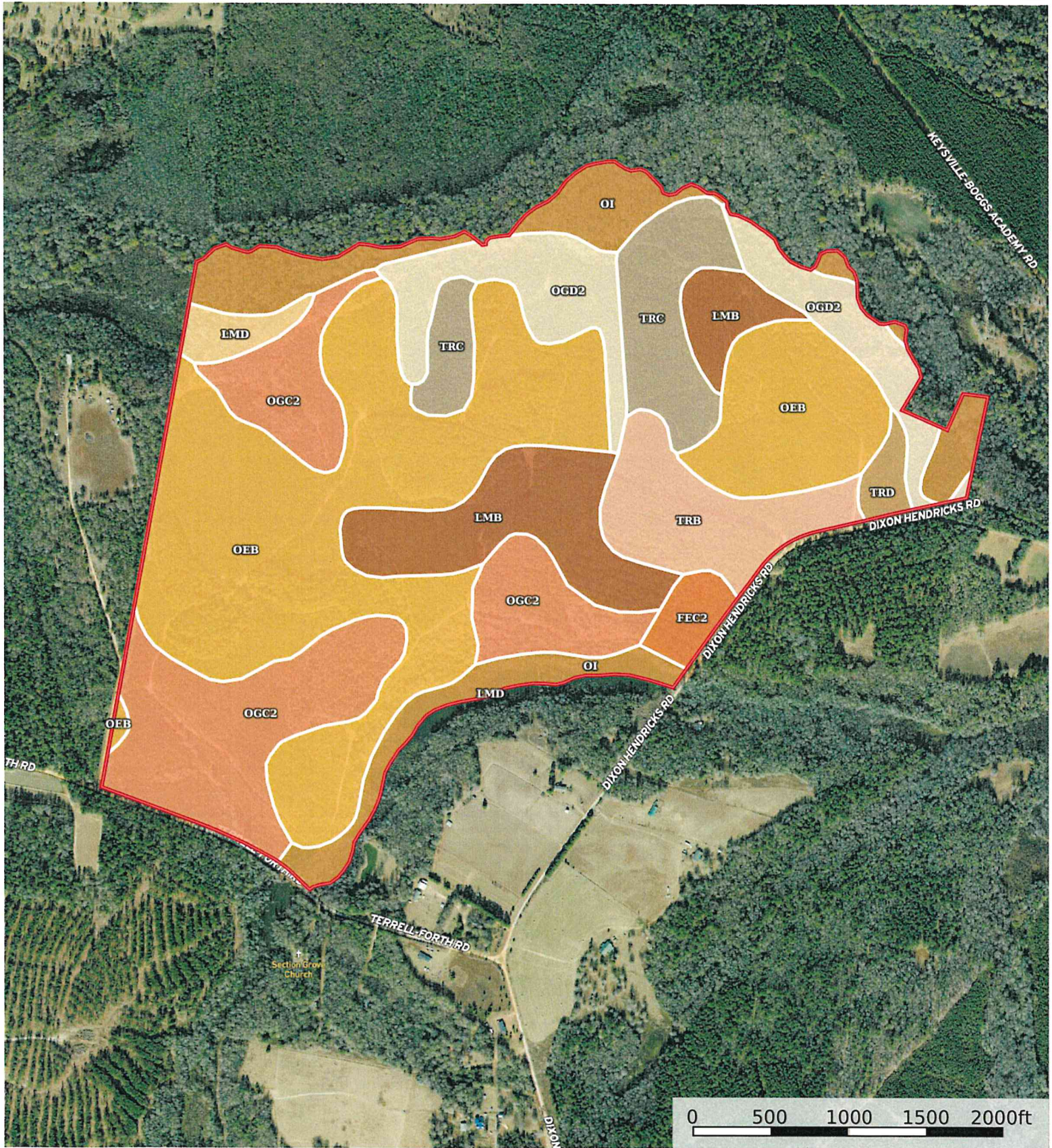


355+/- acres Dixon Hendricks Rd & Terrell-Forth Rd -  
Burke County, Georgia, 355 AC +/-

PLANTATION PROPERTIES  
LAND INVESTMENTS, LLC



Boundary



|  Boundary 341.86 ac









SOIL CODE	SOIL DESCRIPTION	ACRES	%	CPI	NCCPI	CAP
OeB	Orangeburg loamy sand, 2 to 5 percent slopes	126.9 2	37.13	0	69	2e
OgC2	Orangeburg sandy loam, 5 to 8 percent slopes, moderately eroded	60.31	17.64	0	67	3e
OI	Osier and Bibb soils, 0 to 2 percent slopes, frequently flooded	34.24	10.02	0	22	5w
LmB	Lucy loamy sand, 0 to 5 percent slopes	32.4	9.48	0	51	2s
OgD2	Orangeburg sandy loam, 8 to 17 percent slopes, eroded	30.58	8.95	0	61	6e
TrC	Troup fine sand, 5 to 8 percent slopes	23.5	6.87	0	31	4s
TrB	Troup fine sand, 1 to 5 percent slopes	20.95	6.13	0	30	3s
FeC2	Faceville sandy loam, 5 to 8 percent slopes, moderately eroded	5.04	1.47	0	72	3e
LmD	Lucy loamy sand, 8 to 17 percent slopes	4.53	1.33	0	50	4s
TrD	Troup fine sand, 8 to 17 percent slopes	3.39	0.99	0	31	6s
TOTALS		341.8 6(*)	100%	-	55.93	3.11

(\*) Total acres may differ in the second decimal compared to the sum of each acreage soil. This is due to a round error because we only show the acres of each soil with two decimal.

## Capability Legend

Increased Limitations and Hazards

Decreased Adaptability and Freedom of Choice Users

Land, Capability								
	1	2	3	4	5	6	7	8
'Wild Life'	•	•	•	•	•	•	•	•
Forestry	•	•	•	•	•	•	•	
Limited	•	•	•	•	•	•	•	
Moderate	•	•	•	•	•	•		
Intense	•	•	•	•	•			
Limited	•	•	•	•				
Moderate	•	•	•					
Intense	•	•						
Very Intense	•							

### Grazing Cultivation

(c) climatic limitations (e) susceptibility to erosion

(s) soil limitations within the rooting zone (w) excess of water