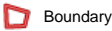
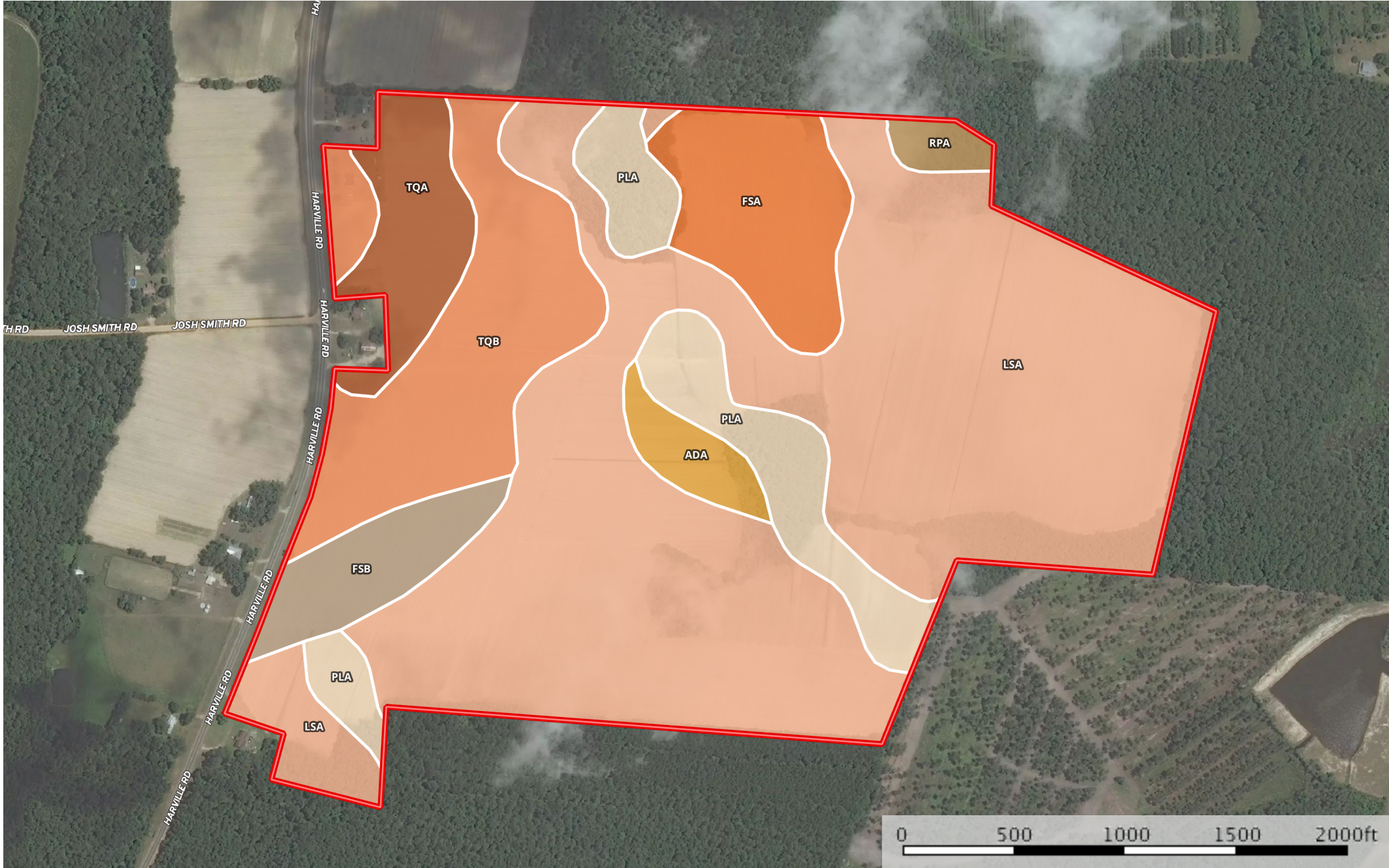


157+/- acres on Harville Rd.
Bulloch County, Georgia, 156.69 AC +/-



Boundary



|  Boundary 158.5 ac









SOIL CODE	SOIL DESCRIPTION	ACRES	%	CAP
Rpa	Rutlege and Portsmouth soils and alluvial land	1.6	1.0	7w
FsA	Fuquay loamy sand, 0 to 2 percent slopes	11.1	7.03	2s
PIA	Pelham loamy sand	14.0	8.85	5w
AdA	Albany sand, 0 to 2 percent slopes	3.2	2.01	3w
TqA	Tifton loamy sand, 0 to 2 percent slopes	7.9	4.95	1
FsB	Fuquay loamy sand, 2 to 5 percent slopes	6.3	4.0	2s
LsA	Leefield loamy sand, 0 to 2 percent slopes	94.3	59.51	2w
TqB	Tifton loamy sand, 2 to 5 percent slopes	20.1	12.66	2e
TOTALS		158.5	100%	2.29

Capability Legend

Increased Limitations and Hazards

Decreased Adaptability and Freedom of Choice Users

Land, Capability
Class(non-irrigated)

								
	1	2	3	4	5	6	7	8
'Wild Life'	•	•	•	•	•	•	•	•
Forestry	•	•	•	•	•	•	•	
Limited	•	•	•	•	•	•	•	
Moderate	•	•	•	•	•	•		
Intense	•	•	•	•	•			
Limited	•	•	•	•				
Moderate	•	•	•					
Intense	•	•						
Very Intense	•							

Grazing Cultivation

(c) climatic limitations (e) susceptibility to erosion

(s) soil limitations within the rooting zone (w) excess of water