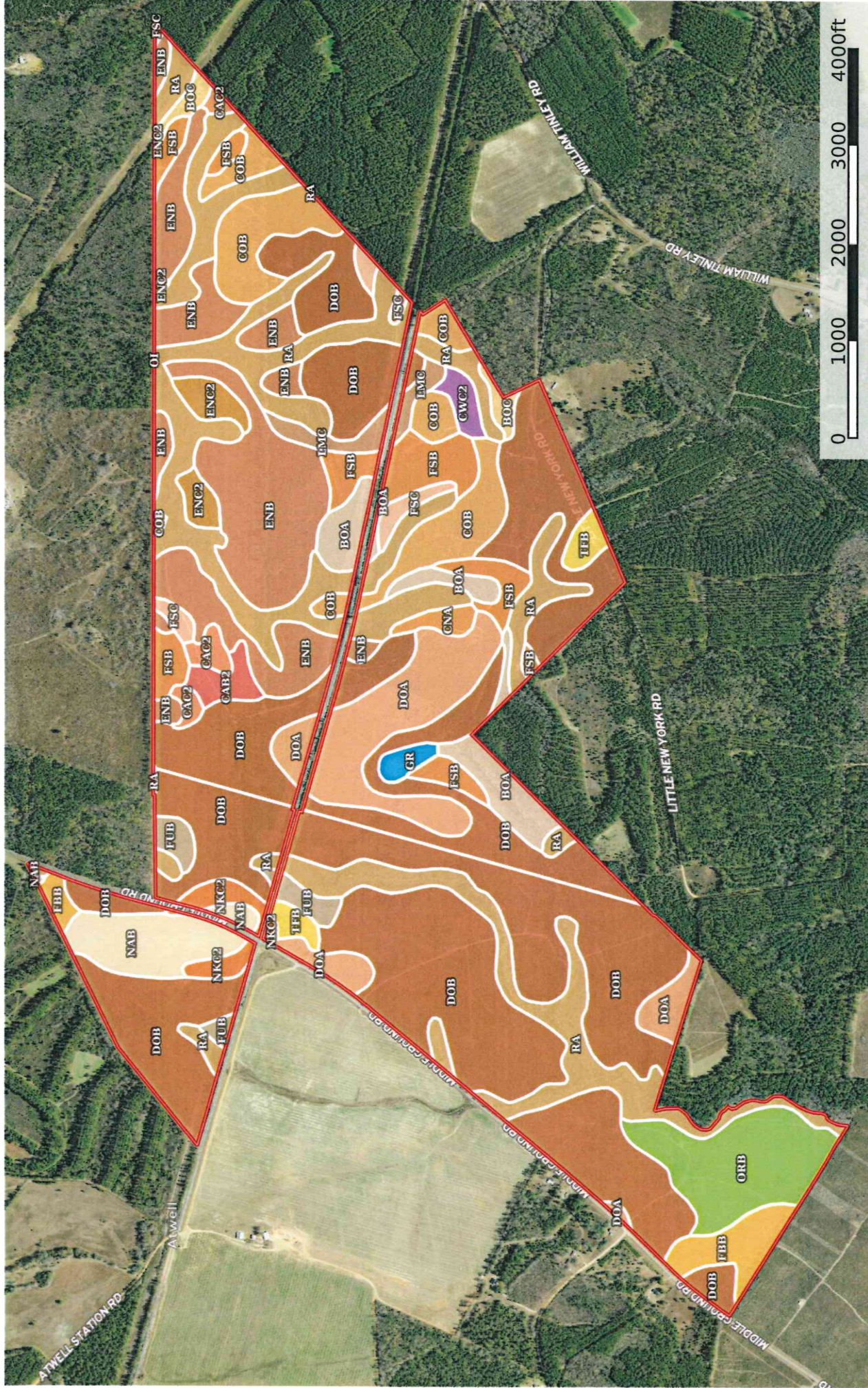


**974+/- acres Middleground Rd. & Little New York Rd.**  
 Jefferson County, Burke County, Georgia, AC +/-



Boundary



|  All Polygons 968.34 ac

SOIL CODE	SOIL DESCRIPTION	ACRES	%	CPI	NCCPI	CAP
DoB	Dothan loamy sand, 2 to 5 percent slopes	378.08	39.05	0	61	2e
Ra	Rains sandy loam, occasionally flooded	153.26	15.83	0	63	4w
ENB	Esto and Nankin soils, 2 to 5 percent slopes	103.81	10.72	0	69	3e
DoA	Dothan loamy sand, 0 to 2 percent slopes	57.65	5.95	0	61	2e
CoB	Cowarts loamy sand, 2 to 5 percent slopes	52.19	5.39	0	45	2e
FsB	Fuquay loamy sand, 0 to 5 percent slopes	37.61	3.88	0	42	2s
OrB	Orangeburg loamy sand, 2 to 5 percent slopes	37.5	3.87	0	69	2e
BoA	Bonifay fine sand, 1 to 5 percent slopes	26.15	2.7	0	33	3s
NaB	Nankin loamy sand, 2 to 5 percent slopes	23.04	2.38	0	64	2e
FbB	Faceville sandy loam, 2 to 5 percent slopes	15.59	1.61	0	77	2e
ENC2	Esto and Nankin sandy loams, 5 to 8 percent slopes, eroded	10.55	1.09	0	65	6e
FuB	Fuquay loamy sand, 0 to 5 percent slopes	9.55	0.99	0	42	2s
LmC	Lucy loamy sand, 5 to 8 percent slopes	8.82	0.91	0	54	3s
NkC2	Nankin sandy loam, 5 to 8 percent slopes, moderately eroded	8.8	0.91	0	63	4e
FsC	Fuquay loamy sand, 5 to 8 percent slopes	8.26	0.85	0	46	3s
TfB	Tifton loamy sand, 2 to 5 percent slopes	7.26	0.75	0	65	2e
CaC2	Carnegie sandy loam, 5 to 8 percent slopes, moderately eroded	6.6	0.68	0	55	4e
CaB2	Carnegie sandy loam, 3 to 5 percent slopes, moderately eroded	6.24	0.64	0	55	3e
BoC	Bonifay fine sand, 5 to 8 percent slopes	5.42	0.56	0	34	4s
CwC2	Cowarts sandy loam, 5 to 8 percent slopes, moderately eroded	4.47	0.46	0	42	4e
CnA	Clarendon loamy sand, 0 to 2 percent slopes	3.99	0.41	0	57	2w
GR	Grady-Rembert association	3.48	0.36	0	24	5w
OI	Osier and Bibb soils, 0 to 2 percent slopes, frequently flooded	0.02	0.0	0	22	5w
TOTALS		968.34(*)	100%	-	59.7	2.58

(\*) Total acres may differ in the second decimal compared to the sum of each acreage soil. This is due to a round error because we only show the acres of each soil with two decimal.

|  Boundary 68.99 ac

SOIL CODE	SOIL DESCRIPTION	ACRES	%	CPI	NCCPI	CAP
DoB	Dothan loamy sand, 2 to 5 percent slopes	37.57	54.47	0	61	2e
NaB	Nankin loamy sand, 2 to 5 percent slopes	20.99	30.43	0	64	2e
NkC2	Nankin sandy loam, 5 to 8 percent slopes, moderately eroded	3.63	5.26	0	63	4e

FbB	Faceville sandy loam, 2 to 5 percent slopes	2.96	4.29	0	77	2e
Ra	Rains sandy loam, occasionally flooded	2.36	3.42	0	63	4w
FuB	Fuquay loamy sand, 0 to 5 percent slopes	1.48	2.15	0	42	2s
TOTALS		68.99(*)	100%	-	62.37	2.17

(\*) Total acres may differ in the second decimal compared to the sum of each acreage soil. This is due to a round error because we only show the acres of each soil with two decimal.

 Boundary 366.82 ac

SOIL CODE	SOIL DESCRIPTION	ACRES	%	CPI	NCCPI	CAP
ENB	Esto and Nankin soils, 2 to 5 percent slopes	102.36	27.91	0	69	3e
DoB	Dothan loamy sand, 2 to 5 percent slopes	87.34	23.81	0	61	2e
Ra	Rains sandy loam, occasionally flooded	76.76	20.93	0	63	4w
CoB	Cowarts loamy sand, 2 to 5 percent slopes	26.23	7.15	0	45	2e
FsB	Fuquay loamy sand, 0 to 5 percent slopes	14.98	4.08	0	42	2s
ENC2	Esto and Nankin sandy loams, 5 to 8 percent slopes, eroded	10.55	2.88	0	65	6e
BoA	Bonifay fine sand, 1 to 5 percent slopes	7.53	2.05	0	33	3s
CaC2	Carnegie sandy loam, 5 to 8 percent slopes, moderately eroded	6.6	1.8	0	55	4e
CaB2	Carnegie sandy loam, 3 to 5 percent slopes, moderately eroded	6.24	1.7	0	55	3e
LmC	Lucy loamy sand, 5 to 8 percent slopes	5.47	1.49	0	54	3s
FsC	Fuquay loamy sand, 5 to 8 percent slopes	4.73	1.29	0	46	3s
DoA	Dothan loamy sand, 0 to 2 percent slopes	4.61	1.26	0	61	2e
NkC2	Nankin sandy loam, 5 to 8 percent slopes, moderately eroded	4.47	1.22	0	63	4e
FuB	Fuquay loamy sand, 0 to 5 percent slopes	4.14	1.13	0	42	2s
BoC	Bonifay fine sand, 5 to 8 percent slopes	2.74	0.75	0	34	4s
NaB	Nankin loamy sand, 2 to 5 percent slopes	2.05	0.56	0	64	2e
OI	Osier and Bibb soils, 0 to 2 percent slopes, frequently flooded	0.02	0.01	0	22	5w
TOTALS		366.82(*)	100%	-	60.39	2.95

(\*) Total acres may differ in the second decimal compared to the sum of each acreage soil. This is due to a round error because we only show the acres of each soil with two decimal.

 Boundary 532.53 ac

SOIL CODE	SOIL DESCRIPTION	ACRES	%	CPI	NCCPI	CAP
DoB	Dothan loamy sand, 2 to 5 percent slopes	253.17	47.54	0	61	2e
Ra	Rains sandy loam, occasionally flooded	74.14	13.92	0	63	4w
DoA	Dothan loamy sand, 0 to 2 percent slopes	53.04	9.96	0	61	2e
OrB	Orangeburg loamy sand, 2 to 5 percent slopes	37.5	7.04	0	69	2e

CoB	Cowarts loamy sand, 2 to 5 percent slopes	25.96	4.87	0	45	2e
FsB	Fuquay loamy sand, 0 to 5 percent slopes	22.63	4.25	0	42	2s
BoA	Bonifay fine sand, 1 to 5 percent slopes	18.62	3.5	0	33	3s
FbB	Faceville sandy loam, 2 to 5 percent slopes	12.63	2.37	0	77	2e
TfB	Tifton loamy sand, 2 to 5 percent slopes	7.26	1.36	0	65	2e
CwC2	Cowarts sandy loam, 5 to 8 percent slopes, moderately eroded	4.47	0.84	0	42	4e
CnA	Clarendon loamy sand, 0 to 2 percent slopes	3.99	0.75	0	57	2w
FuB	Fuquay loamy sand, 0 to 5 percent slopes	3.93	0.74	0	42	2s
FsC	Fuquay loamy sand, 5 to 8 percent slopes	3.53	0.66	0	46	3s
GR	Grady-Rembert association	3.48	0.65	0	24	5w
LmC	Lucy loamy sand, 5 to 8 percent slopes	3.35	0.63	0	54	3s
BoC	Bonifay fine sand, 5 to 8 percent slopes	2.68	0.5	0	34	4s
ENB	Esto and Nankin soils, 2 to 5 percent slopes	1.45	0.27	0	69	3e
NkC2	Nankin sandy loam, 5 to 8 percent slopes, moderately eroded	0.7	0.13	0	63	4e
TOTALS		532.5 3(*)	100%	-	58.88	2.38









(\*) Total acres may differ in the second decimal compared to the sum of each acreage soil. This is due to a round error because we only show the acres of each soil with two decimal.

## Capability Legend

Increased Limitations and Hazards

Decreased Adaptability and Freedom of Choice Users

Land, Capability

								
	1	2	3	4	5	6	7	8
'Wild Life'	•	•	•	•	•	•	•	•
Forestry	•	•	•	•	•	•	•	
Limited	•	•	•	•	•	•	•	
Moderate	•	•	•	•	•	•		
Intense	•	•	•	•	•			
Limited	•	•	•	•				
Moderate	•	•	•					
Intense	•	•						
Very Intense	•							

### Grazing Cultivation

(c) climatic limitations (e) susceptibility to erosion

(s) soil limitations within the rooting zone (w) excess of water