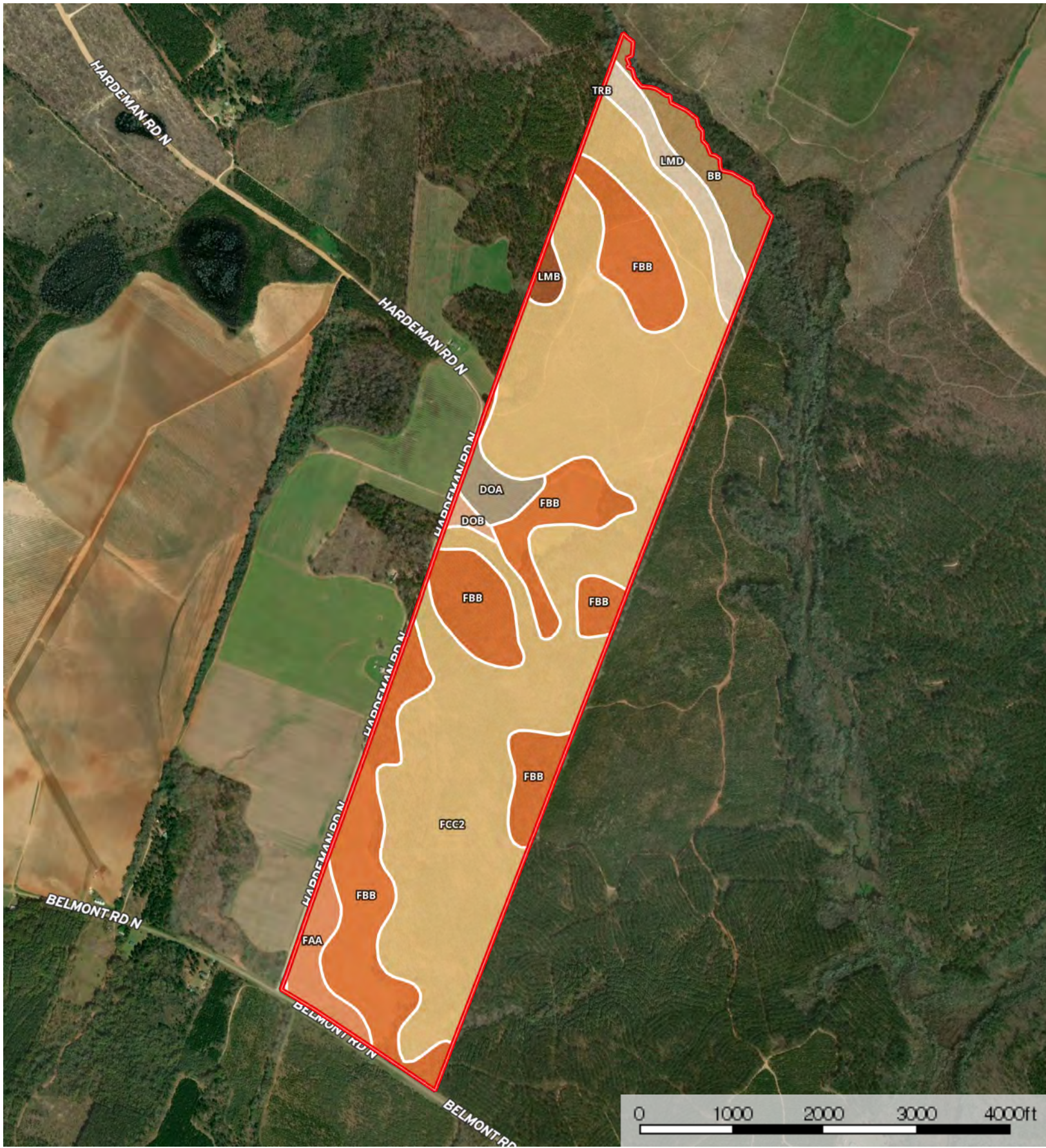


360+/- acres on Belmont Rd. - Gibbons Tract

Jefferson County, Georgia, AC +/-



 Boundary

Boundary 354.3 ac

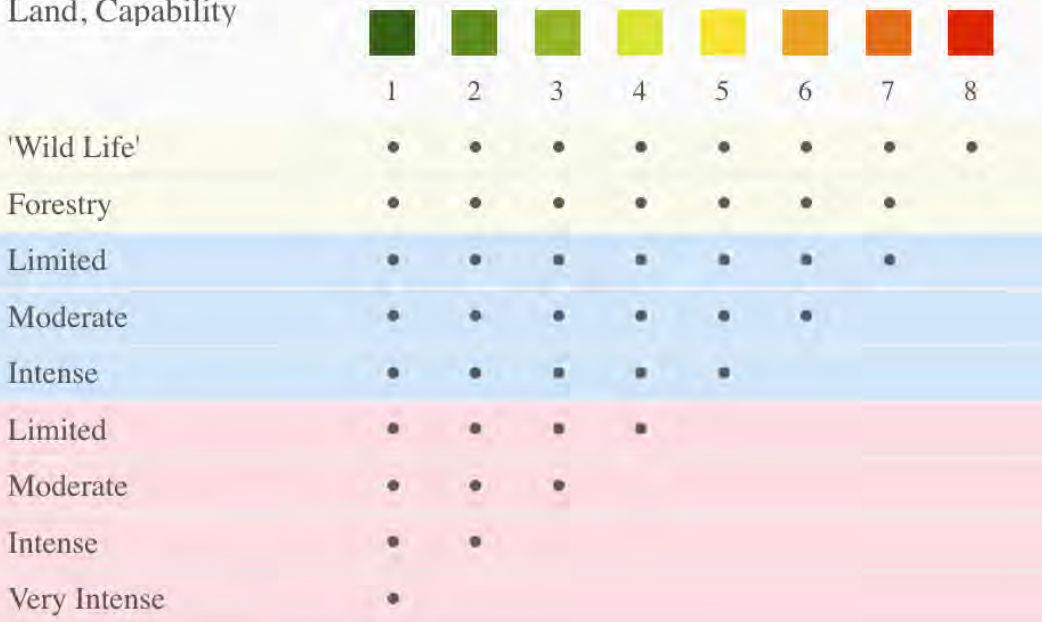
SOIL CODE	SOIL DESCRIPTION	ACRES	%	CAP
BB	Osier and Bibb soils, 0 to 2 percent slopes, frequently flooded	13.4	3.78	5w
FbB	Faceville sandy loam, 2 to 5 percent slopes	97.5	27.51	2e
LmD	Lucy loamy sand, 8 to 15 percent slopes	12.3	3.48	4s
TrB	Troup fine sand, 1 to 5 percent slopes	0.0	0.0	3s
LmB	Lucy loamy sand, 0 to 5 percent slopes	2.8	0.79	2s
DoA	Dothan loamy sand, 0 to 2 percent slopes	6.7	1.9	2e
DoB	Dothan loamy sand, 2 to 5 percent slopes	1.8	0.52	2e
FaA	Faceville loamy sand, 0 to 2 percent slopes	9.9	2.81	1
FcC2	Faceville sandy clay loam, 5 to 8 percent slopes, eroded	209.8	59.21	4e
TOTALS		354.3	100%	3.34

Capability Legend

Increased Limitations and Hazards

Decreased Adaptability and Freedom of Choice Users

Land, Capability



Grazing Cultivation

(c) climatic limitations (e) susceptibility to erosion

(s) soil limitations within the rooting zone (w) excess of water