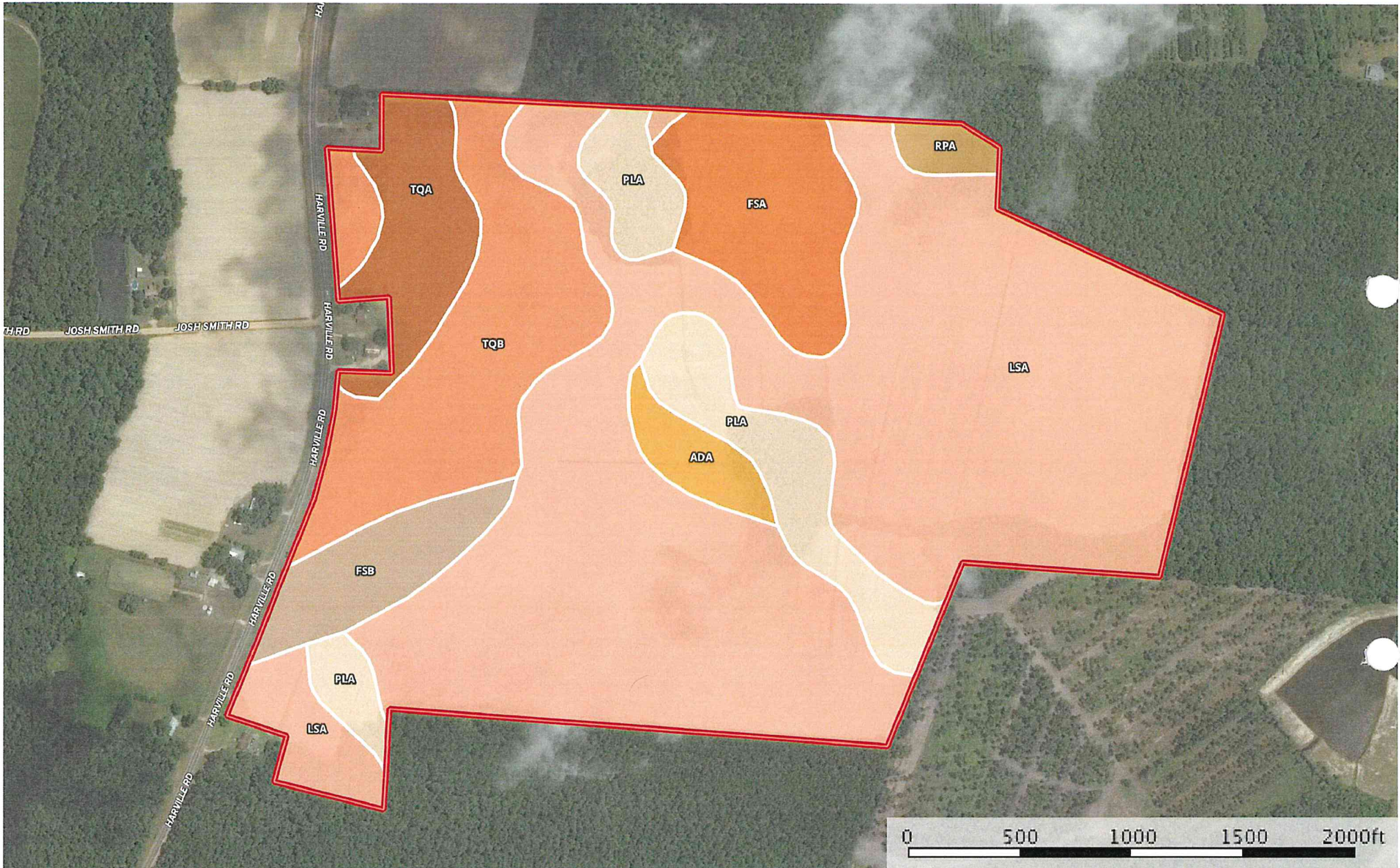


157+/- acres on Harville Rd.
Bulloch County, Georgia, 156.69 AC +/-



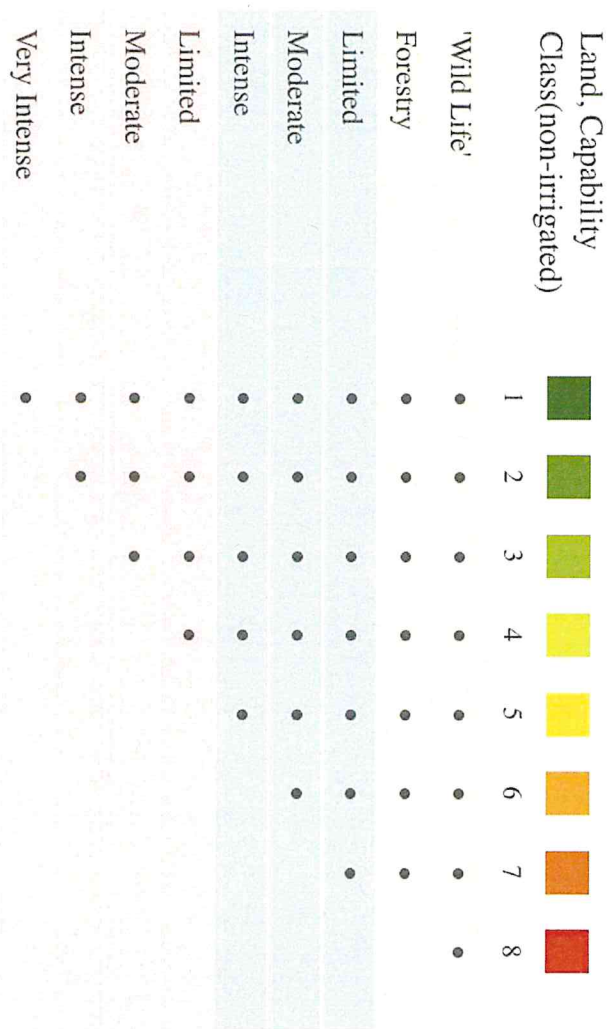
 Boundary

Boundary 158.5 ac

SOIL CODE	SOIL DESCRIPTION	ACRES	%	CAP
Rpa	Rutlege and Portsmouth soils and alluvial land	1.6	1.0	7w
FsA	Fuquay loamy sand, 0 to 2 percent slopes	11.1	7.03	2s
PIA	Pelham loamy sand	14.0	8.85	5w
AdA	Albany sand, 0 to 2 percent slopes	3.2	2.01	3w
TqA	Tifton loamy sand, 0 to 2 percent slopes	7.9	4.95	1
FsB	Fuquay loamy sand, 2 to 5 percent slopes	6.3	4.0	2s
LsA	Leefield loamy sand, 0 to 2 percent slopes	94.3	59.51	2w
TqB	Tifton loamy sand, 2 to 5 percent slopes	20.1	12.66	2e
TOTALS		158.5	100%	2.29

Capability Legend

- Increased Limitations and Hazards
- Decreased Adaptability and Freedom of Choice Users



Grazing Cultivation

- (c) climatic limitations (e) susceptibility to erosion
- (s) soil limitations within the rooting zone (w) excess of water