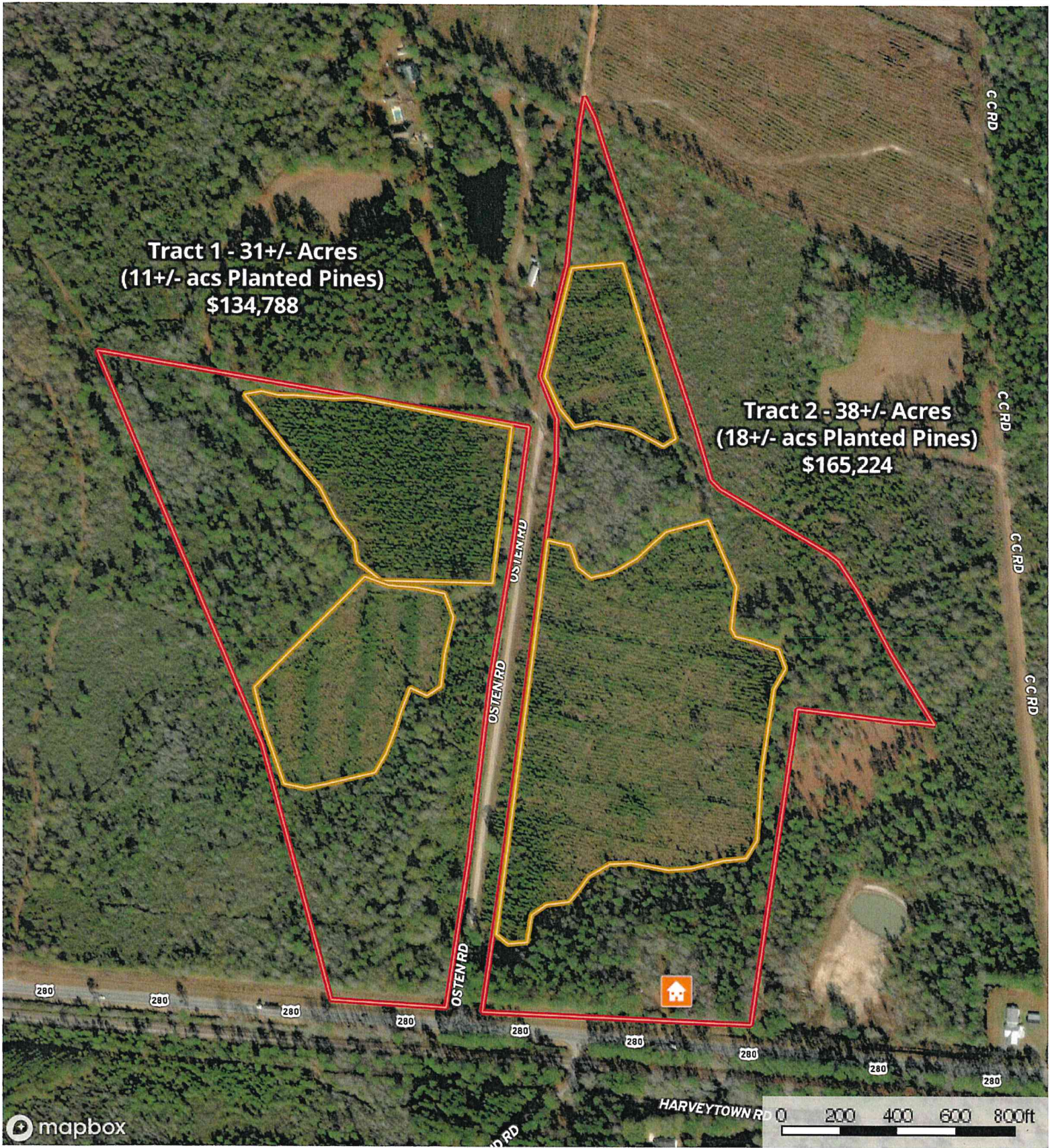


69+/- acres on E. Hwy 280 & Osteen Rd. - Divided  
Bryan County, Georgia, 69 AC +/-

PLANTATION PROPERTIES  
&  
LAND INVESTMENTS, LLC



**Tract 1 - 31+/- Acres**  
**(11+/- acs Planted Pines)**  
**\$134,788**

**Tract 2 - 38+/- Acres**  
**(18+/- acs Planted Pines)**  
**\$165,224**

mapbox

House Planted Pines Boundary

Jason Williams  
P: 912-764-LAND(5263) or 1-833-GOT-LAND (468-5263)

info@landandrivers.com | LandandRivers.com

**M** The information contained herein was obtained from sources deemed to be reliable. MapRight Services makes no warranties or guarantees as to the completeness or accuracy thereof.