

BOUNDARY SURVEY  
OF  
TRACTS 1, 2 & 3  
7424 ACRES

THE FOLLOWING GOVERNMENTAL BODY HAS  
APPROVED APPROVAL:



PLANNING & ZONING ADMINISTRATOR DATE

## SURVEYORS CERTIFICATION

[illegible]

NOTE: THE SURVEYOR HAS MADE NO INVESTIGATION OR INDEPENDENT SEARCH FOR EVIDENCE OF RECORD ENFORCEANCE RESPECTING COVENANT'S CURRENT TITLE EVIDENCE OR ANY OTHER FACTS THAT AN ACCURATE AND CURRENT TITLE SEARCH MAY REVEAL. DISCLOSURE SHOULD BEEN SHALL APPLY ONLY TO THE PERSON(S) AND/OR ESTATE(S) AND/OR ENTITIES HEREON AND SHALL NOT BE EXTENDED TO ANY OTHER PERSON(S) AND/OR ENTITIES.

THIS SURETY COMPLES WITH BOTH THE RULES OF THE GEORGIA BOARD OF REGISTRATION FOR PROFESSIONAL ENGINEERS AND LAND SURVEYORS AND THE OFFICIAL CODE OF GEORGIA ANNOTATED (OCGA) 5-6-61, IN THAT UNDER A CONFLICT EXIST BETWEEN THOSE TWO SETS OF SPECIFICATIONS, THE REQUIREMENTS OF LAW PREVAIL.

ALL IMAGES OF MAPS, PLATS OR PLANS SUBMITTED FOR FILING SHALL, IN COMPLY WITH THE MINIMUM STANDARDS AND SPECIFICATIONS IN THE RULES AND REGULATIONS OF THE STATE BOARD OF REGISTRATION FOR PROFESSIONAL ENGINEERS AND LAND SURVEYORS.

(C) ALL PLATS FOR RECORD WILL BE FILED ELECTRONICALLY USING A TIF FORMAT WITH A RESOLUTION OF 300 DPI, SUBMITTED TO THE E-FILEING PORTAL AT THE BOCCA ABBATE.

LINE TABLE		BEARING
LINE	LENGTH	
L1	63.66	6.66/22.9%
L2	61.04	6.04/19.5%
L3	22.80	6.66/29.2%
L4	66.97	6.66/10.5%
L5	26.10	6.66/25.5%
L6	62.50	6.66/10.7%
L7	62.53	6.66/10.7%
L8	42.71	6.66/15.6%
L9	56.21	6.66/11.8%
L10	16.33	6.66/40.6%
L11	63.17	6.66/10.5%
L12	33.68	6.66/19.8%
L13	63.68	6.66/10.5%
L14	64.40	6.66/10.3%
L15	12.86	6.66/52.6%
L16	62.10	6.66/10.5%
L17	62.30	6.66/10.4%
L18	62.30	6.66/10.4%
L19	62.30	6.66/10.4%
L20	62.30	6.66/10.4%
L21	62.30	6.66/10.4%
L22	62.30	6.66/10.4%
L23	62.30	6.66/10.4%
L24	62.30	6.66/10.4%
L25	62.30	6.66/10.4%
L26	62.30	6.66/10.4%
L27	62.30	6.66/10.4%
L28	62.30	6.66/10.4%
L29	62.30	6.66/10.4%
L30	62.30	6.66/10.4%
L31	62.30	6.66/10.4%
L32	62.30	6.66/10.4%
L33	62.30	6.66/10.4%
L34	62.30	6.66/10.4%
L35	62.30	6.66/10.4%
L36	62.30	6.66/10.4%
L37	62.30	6.66/10.4%
L38	62.30	6.66/10.4%
L39	62.30	6.66/10.4%
L40	62.30	6.66/10.4%
L41	62.30	6.66/10.4%
L42	62.30	6.66/10.4%
L43	62.30	6.66/10.4%
L44	62.30	6.66/10.4%
L45	62.30	6.66/10.4%
L46	62.30	6.66/10.4%
L47	62.30	6.66/10.4%
L48	62.30	6.66/10.4%
L49	62.30	6.66/10.4%
L50	62.30	6.66/10.4%
L51	62.30	6.66/10.4%
L52	62.30	6.66/10.4%
L53	62.30	6.66/10.4%
L54	62.30	6.66/10.4%
L55	62.30	6.66/10.4%
L56	62.30	6.66/10.4%
L57	62.30	6.66/10.4%
L58	62.30	6.66/10.4%
L59	62.30	6.66/10.4%
L60	62.30	6.66/10.4%
L61	62.30	6.66/10.4%
L62	62.30	6.66/10.4%
L63	62.30	6.66/10.4%
L64	62.30	6.66/10.4%
L65	62.30	6.66/10.4%
L66	62.30	6.66/10.4%
L67	62.30	6.66/10.4%
L68	62.30	6.66/10.4%
L69	62.30	6.66/10.4%
L70	62.30	6.66/10.4%
L71	62.30	6.66/10.4%
L72	62.30	6.66/10.4%
L73	62.30	6.66/10.4%
L74	62.30	6.66/10.4%
L75	62.30	6.66/10.4%
L76	62.30	6.66/10.4%
L77	62.30	6.66/10.4%
L78	62.30	6.66/10.4%
L79	62.30	6.66/10.4%
L80	62.30	6.66/10.4%
L81	62.30	6.66/10.4%
L82	62.30	6.66/10.4%
L83	62.30	6.66/10.4%
L84	62.30	6.66/10.4%
L85	62.30	6.66/10.4%
L86	62.30	6.66/10.4%
L87	62.30	6.66/10.4%
L88	62.30	6.66/10.4%
L89	62.30	6.66/10.4%
L90	62.30	6.66/10.4%
L91	62.30	6.66/10.4%
L92	62.30	6.66/10.4%
L93	62.30	6.66/10.4%
L94	62.30	6.66/10.4%
L95	62.30	6.66/10.4%
L96	62.30	6.66/10.4%
L97	62.30	6.66/10.4%
L98	62.30	6.66/10.4%
L99	62.30	6.66/10.4%
L100	62.30	6.66/10.4%

THIS FLAT HAS BEEN CALCULATED FOR CLOSURE AND HAS BEEN FOUND TO BE ACCURATE WITHIN ONE FOOT IN 514,553 FEET.

WAS A MINIMUM CLOSURE OF ONE FOOT IN FEET  
200001 AND WAS ADJUSTED USING LEAST SQUARES  
ADJUSTMENT.

AFTER REVIEW OF THE PENALTY FLOOD INSURANCE  
RATE MADE 00442 - 0319 - C DATED 01/01/02 IT  
WAS BEEN DETERMINED THIS PROPERTY LIES WITHIN  
A ZONE "X".

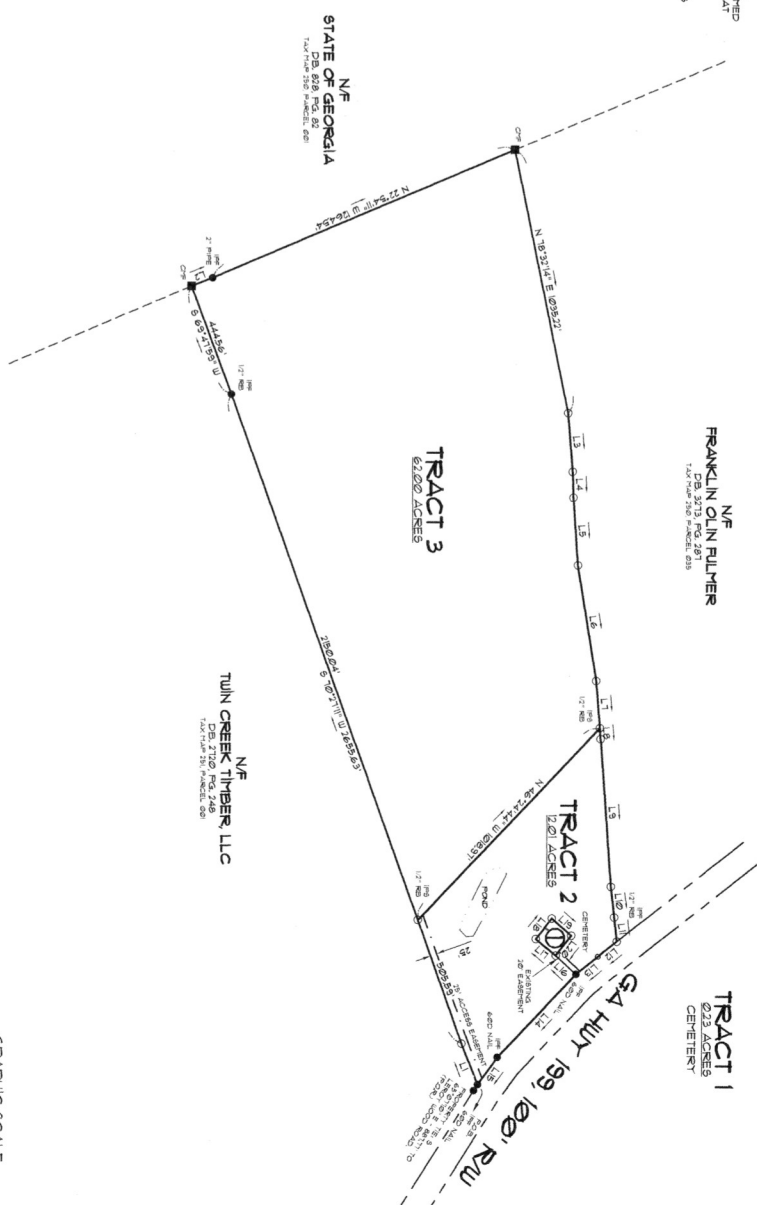
INSTRUMENT USED: CARLSON BRX-1 RTK SYSTEM  
AND SURVEYOR'S DATA COLLECTOR

BETTY JEAN FROST

**TANNER**  
A ASSOCIATES - FIRM SUPPORTS  
ERENT E. TANNER 478-378-9492  
1808 WATKINS DAIRY ROAD  
DUBLIN, GEORGIA 31021

[illegible]

DATE: 04/08/2025



GRAPHIC SCALE  
(IN FEET)  
1 inch = 300 ft.