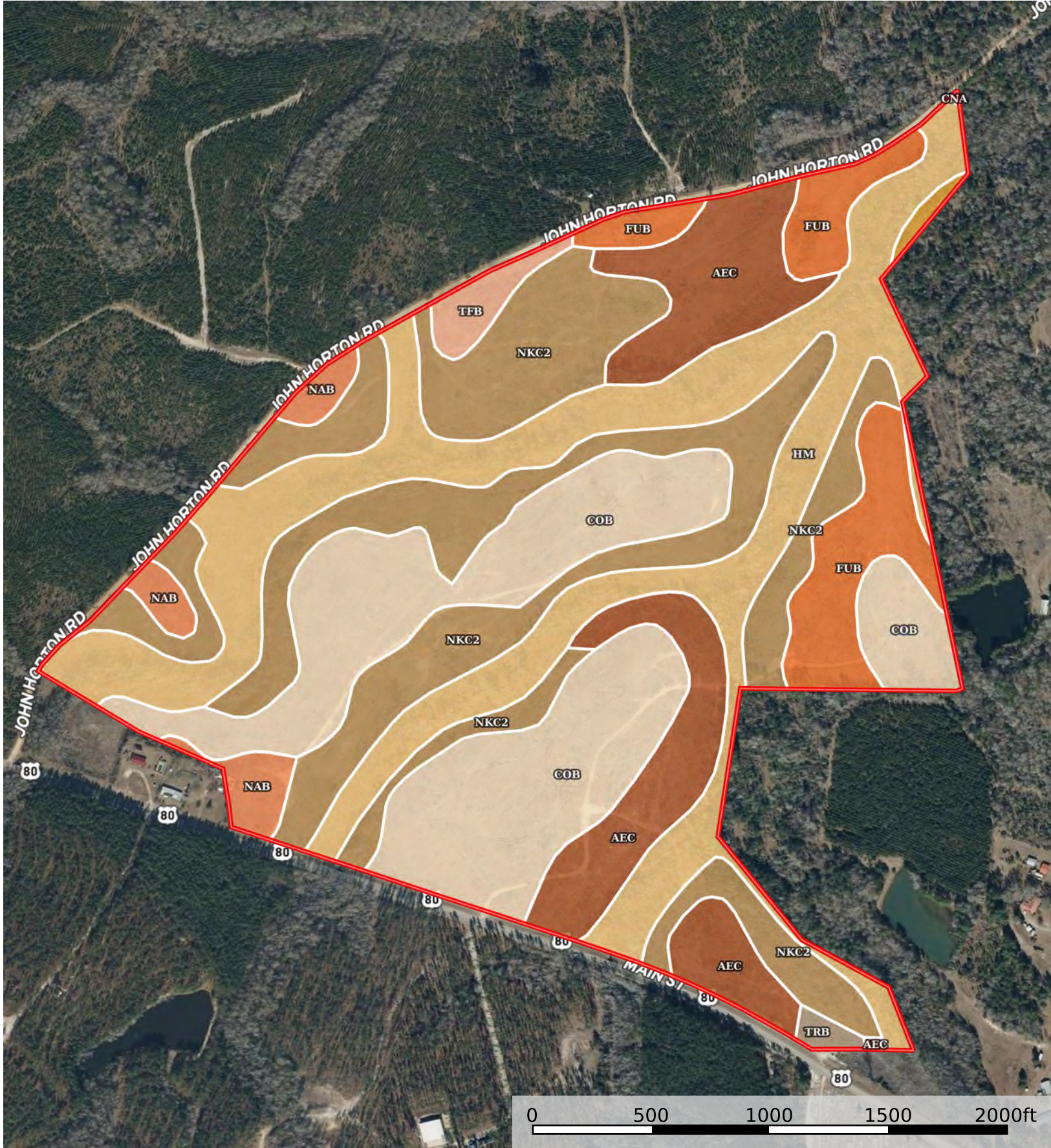



197+/- acs Hwy 80 W & John Horton Rd.  
Johnson County, Georgia, AC +/-



 Boundary

## Boundary 188.31 ac

SOIL CODE	SOIL DESCRIPTION	ACRES	%	CPI	NCCPI	CAP
NkC2	Nankin sandy loam, 5 to 8 percent slopes, moderately eroded	51.9	27.56	0	63	4e
HM	Herod and Muckalee sandy loams, frequently flooded	47.01	24.96	0	60	5w
CoB	Cowarts loamy sand, 2 to 5 percent slopes	43.84	23.28	0	45	2e
AeC	Ailey loamy sand, 5 to 8 percent slopes	23.59	12.53	0	26	4s
FuB	Fuquay loamy sand, 0 to 5 percent slopes	13.58	7.21	0	42	2s
NaB	Nankin loamy sand, 2 to 5 percent slopes	4.64	2.46	0	64	2e
TfB	Tifton loamy sand, 2 to 5 percent slopes	2.34	1.24	0	65	2e
TrB	Troup sand, 0 to 6 percent slopes	0.76	0.4	0	38	3s
CnA	Clarendon loamy sand, 0 to 2 percent slopes	0.65	0.35	0	61	2w
TOTALS		188.31(*)	100%	-	51.85	3.55

(\*) Total acres may differ in the second decimal compared to the sum of each acreage soil. This is due to a round error because we only show the acres of each soil with two decimal.

### Capability Legend

Increased Limitations and Hazards

Decreased Adaptability and Freedom of Choice Users

Land, Capability

	1	2	3	4	5	6	7	8
'Wild Life'	•	•	•	•	•	•	•	•
Forestry	•	•	•	•	•	•	•	
Limited	•	•	•	•	•	•	•	
Moderate	•	•	•	•	•	•		
Intense	•	•	•	•	•			
Limited	•	•	•	•				
Moderate	•	•	•					
Intense	•	•						
Very Intense	•							

### Grazing Cultivation

(c) climatic limitations (e) susceptibility to erosion

(s) soil limitations within the rooting zone (w) excess of water