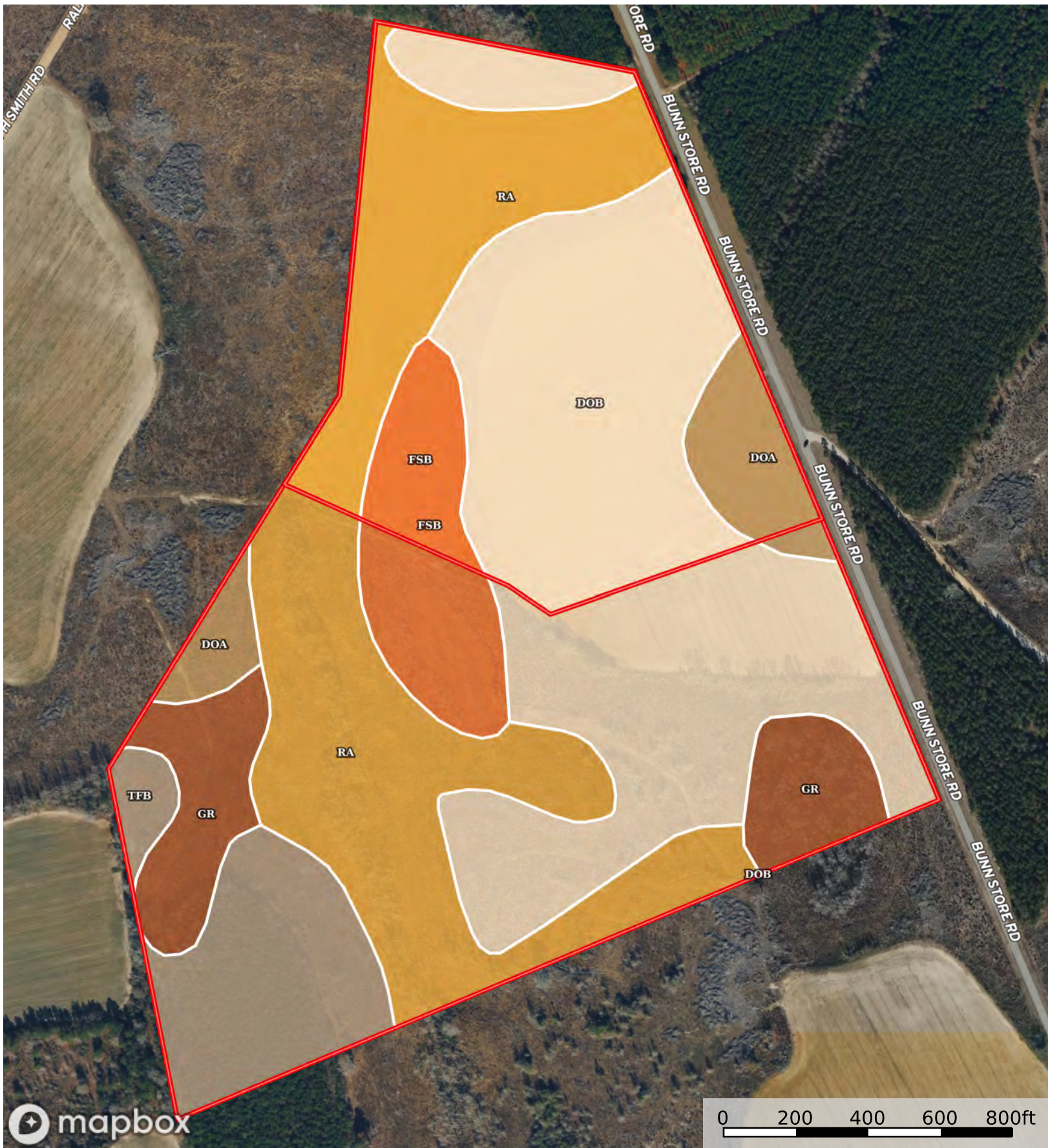


# Subdivided - 90+/- acs Bunn Store Rd. Burke County, Georgia, 125.23 AC +/-



 Boundary

|  All Polygons 125.34 ac

SOIL CODE	SOIL DESCRIPTION	ACRES	%	CPI	NCCPI	CAP
DoB	Dothan loamy sand, 2 to 5 percent slopes	54.9	43.8	0	61	2e
Ra	Rains sandy loam	37.48	29.9	0	64	3w
FsB	Fuquay loamy sand, 0 to 5 percent slopes	9.76	7.79	0	42	2s
TfB	Tifton loamy sand, 2 to 5 percent slopes	8.77	7.0	0	65	2e
DoA	Dothan loamy sand, 0 to 2 percent slopes	7.46	5.95	0	61	2e
GR	Grady-Rembert association	6.97	5.56	0	24	5w
TOTALS		125.34(*)	100%	-	58.64	2.47

(\*) Total acres may differ in the second decimal compared to the sum of each acreage soil. This is due to a round error because we only show the acres of each soil with two decimal.

|  Boundary 35.27 ac

SOIL CODE	SOIL DESCRIPTION	ACRES	%	CPI	NCCPI	CAP
DoB	Dothan loamy sand, 2 to 5 percent slopes	18.96	53.74	0	61	2e
Ra	Rains sandy loam	10.47	29.68	0	64	3w
FsB	Fuquay loamy sand, 0 to 5 percent slopes	2.98	8.45	0	42	2s
DoA	Dothan loamy sand, 0 to 2 percent slopes	2.86	8.11	0	61	2e
TOTALS		35.27(*)	100%	-	60.27	2.3

(\*) Total acres may differ in the second decimal compared to the sum of each acreage soil. This is due to a round error because we only show the acres of each soil with two decimal.

|  Boundary 90.07 ac

SOIL CODE	SOIL DESCRIPTION	ACRES	%	CPI	NCCPI	CAP
DoB	Dothan loamy sand, 2 to 5 percent slopes	35.94	39.91	0	61	2e
Ra	Rains sandy loam	27.01	29.99	0	64	3w
TfB	Tifton loamy sand, 2 to 5 percent slopes	8.77	9.74	0	65	2e
GR	Grady-Rembert association	6.97	7.74	0	24	5w
FsB	Fuquay loamy sand, 0 to 5 percent slopes	6.78	7.53	0	42	2s
DoA	Dothan loamy sand, 0 to 2 percent slopes	4.6	5.11	0	61	2e
TOTALS		90.07(*)	100%	-	58.0	2.53









(\*) Total acres may differ in the second decimal compared to the sum of each acreage soil. This is due to a round error because we only show the acres of each soil with two decimal.

## Capability Legend

Increased Limitations and Hazards

Decreased Adaptability and Freedom of Choice Users

Land, Capability

								
	1	2	3	4	5	6	7	8
'Wild Life'	•	•	•	•	•	•	•	•
Forestry	•	•	•	•	•	•	•	
Limited	•	•	•	•	•	•	•	
Moderate	•	•	•	•	•	•		
Intense	•	•	•	•	•			
Limited	•	•	•	•				
Moderate	•	•	•					
Intense	•	•						
Very Intense	•							

### Grazing Cultivation

(c) climatic limitations (e) susceptibility to erosion

(s) soil limitations within the rooting zone (w) excess of water