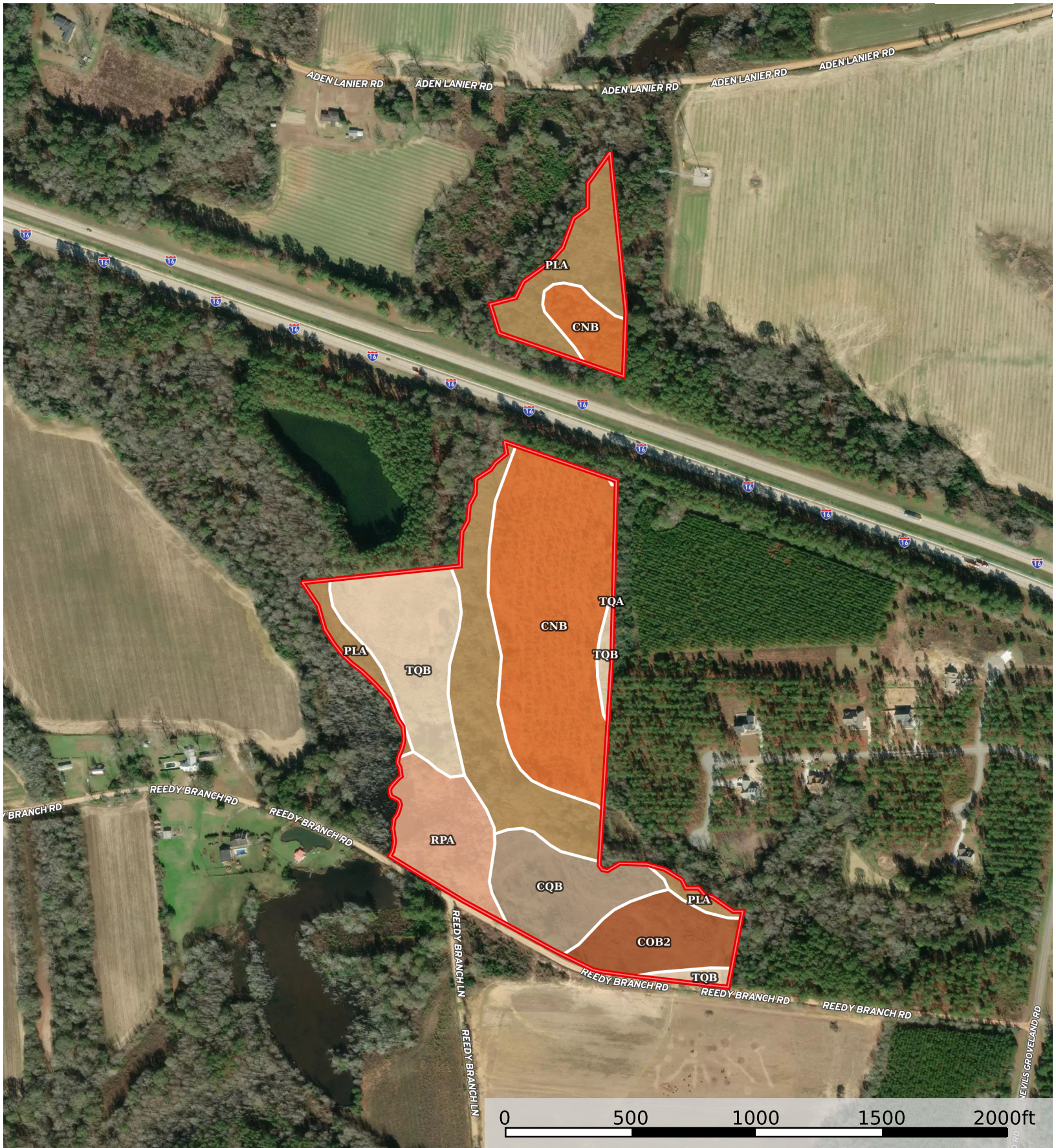


reedy branch rd Georgia, AC +/-



 Boundary

 All Polygons 45.67 ac

SOIL CODE	SOIL DESCRIPTION	ACRES	%	CPI	NCCPI	CAP
CnB	Carnegie loamy sand, 2 to 5 percent slopes	14.79	32.38	0	52	2e
PIA	Pelham loamy sand	11.99	26.25	0	44	5w
TqB	Tifton loamy sand, 2 to 5 percent slopes	6.56	14.36	0	65	2e
CqB	Cowarts loamy sand, 2 to 5 percent slopes	4.51	9.88	0	45	2e
Rpa	Rutlege and Portsmouth soils and alluvial land	4.16	9.11	0	28	7w
CoB2	Carnegie sandy loam, 2 to 5 percent slopes, moderately eroded	3.65	7.99	0	70	3e
TqA	Tifton loamy sand, 0 to 2 percent slopes	0.01	0.02	0	66	1
TOTALS		45.67(*)	100%	-	50.33	3.32

(*) Total acres may differ in the second decimal compared to the sum of each acreage soil. This is due to a round error because we only show the acres of each soil with two decimal.

 Boundary 40.37 ac

SOIL CODE	SOIL DESCRIPTION	ACRES	%	CPI	NCCPI	CAP
CnB	Carnegie loamy sand, 2 to 5 percent slopes	13.12	32.5	0	52	2e
PIA	Pelham loamy sand	8.36	20.71	0	44	5w
TqB	Tifton loamy sand, 2 to 5 percent slopes	6.56	16.25	0	65	2e
CqB	Cowarts loamy sand, 2 to 5 percent slopes	4.51	11.17	0	45	2e
Rpa	Rutlege and Portsmouth soils and alluvial land	4.16	10.3	0	28	7w
CoB2	Carnegie sandy loam, 2 to 5 percent slopes, moderately eroded	3.65	9.04	0	70	3e
TqA	Tifton loamy sand, 0 to 2 percent slopes	0.01	0.02	0	66	1
TOTALS		40.37(*)	100%	-	50.83	3.23

(*) Total acres may differ in the second decimal compared to the sum of each acreage soil. This is due to a round error because we only show the acres of each soil with two decimal.

 Boundary 5.3 ac

SOIL CODE	SOIL DESCRIPTION	ACRES	%	CPI	NCCPI	CAP
PIA	Pelham loamy sand	3.63	68.49	0	44	5w
CnB	Carnegie loamy sand, 2 to 5 percent slopes	1.67	31.51	0	52	2e
TOTALS		5.3(*)	100%	-	46.52	4.05

(*) Total acres may differ in the second decimal compared to the sum of each acreage soil. This is due to a round error because we only show the acres of each soil with two decimal.

Capability Legend

Increased Limitations and Hazards

Decreased Adaptability and Freedom of Choice Users

Land, Capability

								
	1	2	3	4	5	6	7	8
'Wild Life'	•	•	•	•	•	•	•	•
Forestry	•	•	•	•	•	•	•	
Limited	•	•	•	•	•	•	•	
Moderate	•	•	•	•	•	•		
Intense	•	•	•	•	•			
Limited	•	•	•	•				
Moderate	•	•	•					
Intense	•	•						
Very Intense	•							

Grazing Cultivation

(c) climatic limitations (e) susceptibility to erosion

(s) soil limitations within the rooting zone (w) excess of water