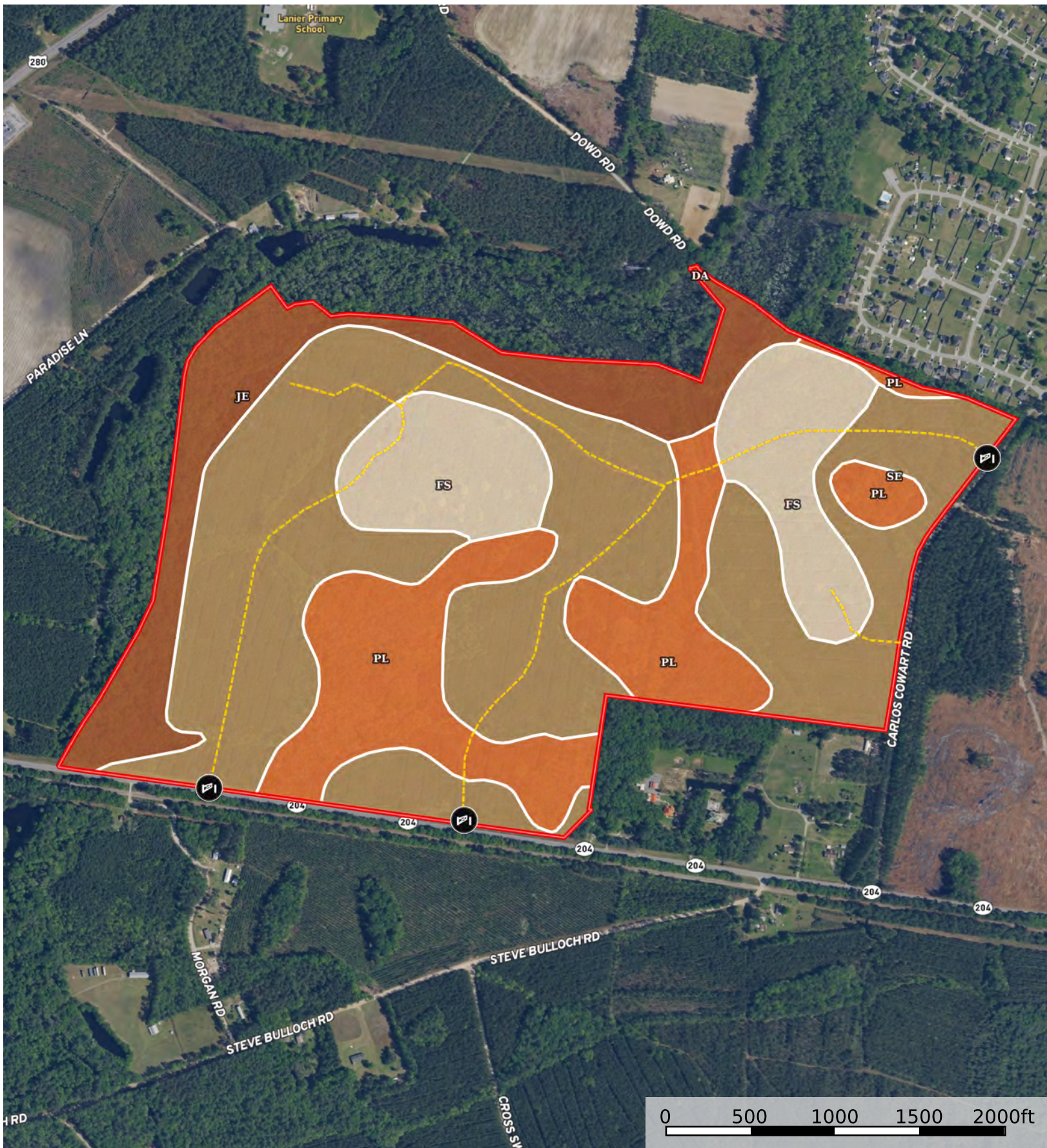


# 287+/- Acres Hwy 204 & Carlos Cowart Rd.

Bryan County, Georgia, 286.75 AC +/-



Gate      Road / Trail      Boundary

Boundary 272.73 ac

SOIL CODE	SOIL DESCRIPTION	ACRES	%	CPI	NCCPI	CAP
Se	Stilson loamy sand	136.4 1	50.02	0	53	2w
Pl	Pelham loamy sand, 0 to 2 percent slopes, frequently flooded	56.18	20.6	0	38	5w
Fs	Fuquay loamy sand	41.16	15.09	0	44	2s
Je	Johnston loam	38.88	14.26	0	25	7w
Da	Dothan loamy sand	0.1	0.04	0	58	1
TOTALS		272.7 3(*)	100%	-	44.56	3.33

(\*) Total acres may differ in the second decimal compared to the sum of each acreage soil. This is due to a round error because we only show the acres of each soil with two decimal.

